

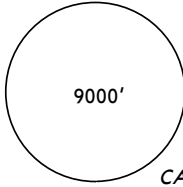
**JEPPESEN**

15 MAY 98 **16-1**

**CAMIRI, BOLIVIA**

CAMIRI

\*CAMIRI Tower **118.1**



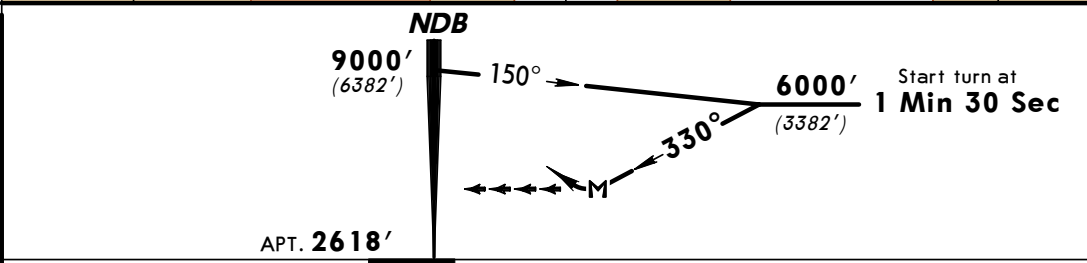
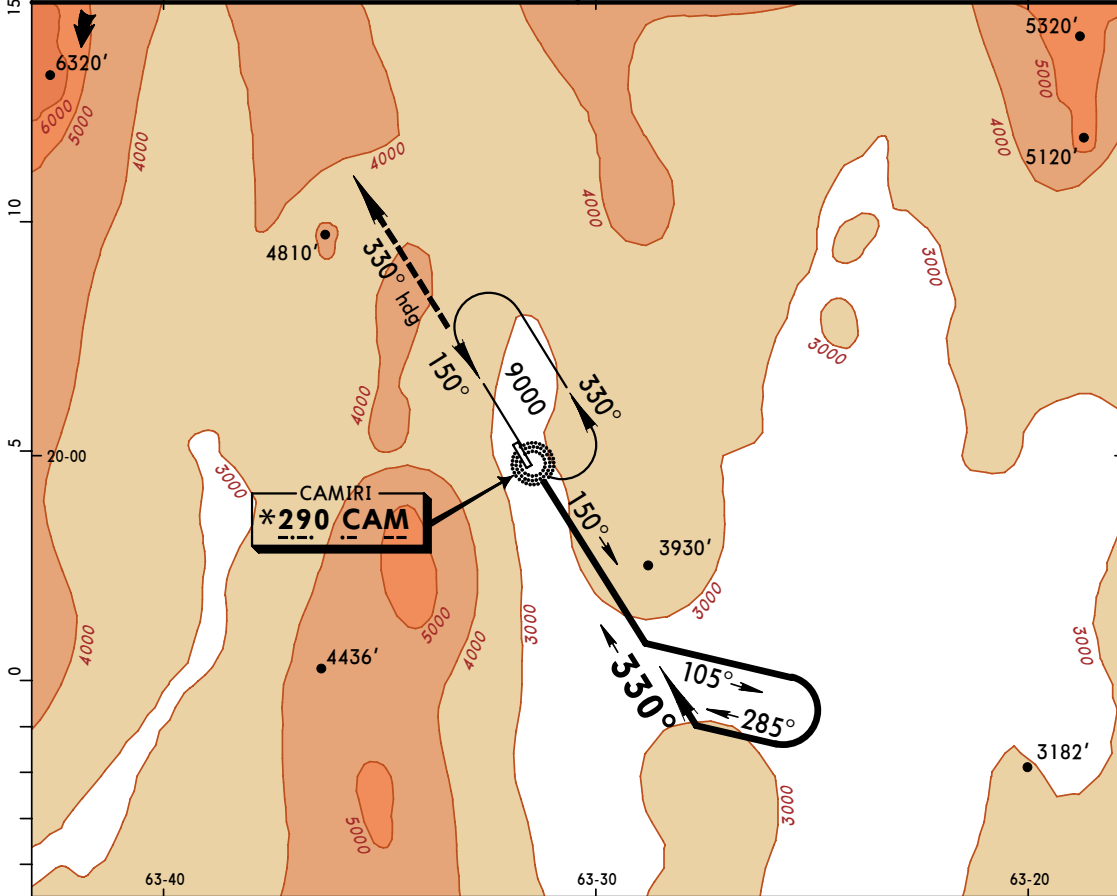
CAT A, B & C' **NDB-1 Rwy 33**

**NDB \*290 CAM**

Alt Set: hPa      Trans level: By ATC  
 Apt Elev: 92 hPa      Trans alt: 10000' (7382')

MSA  
CAM NDB

Apt. Elev **2618'**



**MISSED APPROACH:** Upon reaching **MDA(H)** climb to **7000'** on **330°** heading and follow instructions from **CONTROL**.

STRAIGHT-IN LANDING RWY 33		CIRCLE-TO-LAND	
MDA(H) <b>5700'</b> (3082')			
DAY	NIGHT		
A	4.8 km	NA	A
B			B
C			C
D			D
NA		NA	

PANS OPS


CHANGES: Procedure.

© JEPPESEN SANDERSON, INC., 1985, 1998. ALL RIGHTS RESERVED.

**CAMIRI, BOLIVIA**  
**CAMIRI**

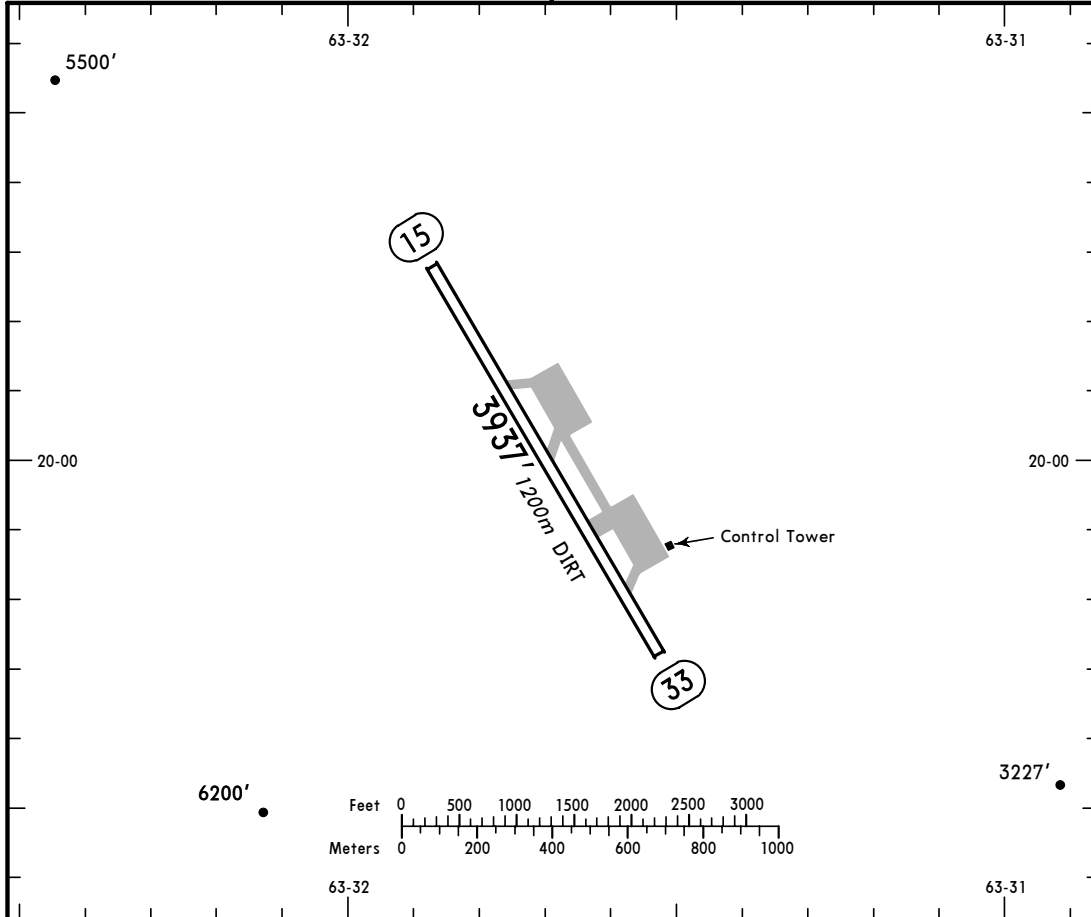
SLCA **16-1** 15 MAY 98

**JEPPESEN**

S20 00.0 W063 31.7

\*CAMIRI Tower **118.1**

Elev **2618'** Var 06°W



**ADDITIONAL RUNWAY INFORMATION**

RWY	USABLE LENGTHS		TAKE-OFF	WIDTH
	LANDING BEYOND Threshold	Glide Slope		
15 33				98' 30m

TAKE-OFF	
	All Rwys
A	10 km
B	

CHANGES: Coordinates, elevation, take off minimums.

© JEPPESEN SANDERSON, INC., 1985, 1998. ALL RIGHTS RESERVED.