

List of pages in this Trip Kit

Trip Kit Index

Airport Information For SLET

Terminal Charts For SLET

Revision Letter For Cycle 25-2012

Change Notices

Notebook

General Information

Location: Santa Cruz Bol
IATA Code: SRZ
Lat/Long: S17° 48.7' W063° 10.2'
Elevation: 1372 ft

Airport Use: Public
Magnetic Variation: 10.9°W

Fuel Types: 100-130 Octane, Jet A-1
Customs: No
Airport Type: IFR
Landing Fee: No
Control Tower: Yes
Jet Start Unit: No
LLWS Alert: No
Beacon: No

Sunrise: 1010 Z
Sunset: 2243 Z,

Runway Information

Runway: 15
Length x Width: 9098 ft x 131 ft
Surface Type: asphalt
TDZ-Elev: 1372 ft
Lighting: Edge
Displaced Threshold: 938 ft

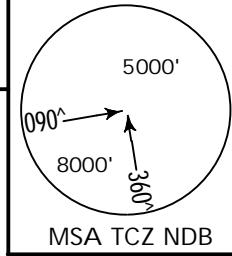
Runway: 33
Length x Width: 9098 ft x 131 ft
Surface Type: asphalt
TDZ-Elev: 1372 ft
Lighting: Edge
Displaced Threshold: 899 ft
Stopway: 197 ft

Communication Information

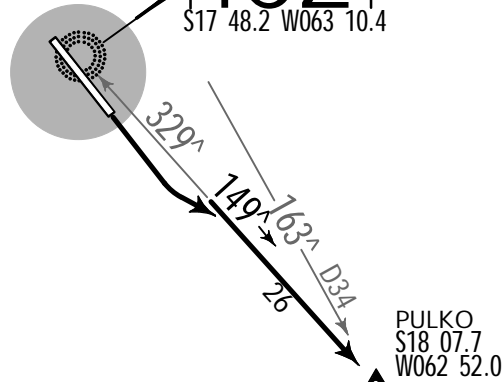
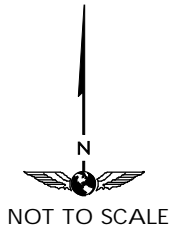
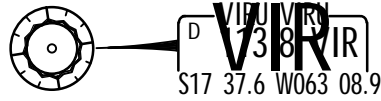
Trompillo Tower 118.3
Trompillo Ground Control 121.7
Viru Viru Approach Control 119.7

Apt Elev
1372'

Trans level: By ATC Trans alt: 5000'



**ANBUN 1 [ANBUN1], LIVON 1 [LIVON1],
LODAK 1 [LODAK1] DEPARTURES**
(RWY 15)



VALIDO SOLO PARA SU USO EN SIMULADOR

LODAK
S18 52.8
W063 38.9

At or above
FL170

ANBUN
S18 57.1
W063 21.6

At or above
FL100

LIVON
S18 57.5
W063 18.3

At or above
FL100

~~UW-316~~
~~W-8~~

~~-A-316-~~

~~-T-554-~~

LODAK 1
63

ANBUN 1
57

LIVON 1
56

211^

199^

197^

236^ hdg

221^ hdg

218^ hdg

INITIAL CLIMB

After take-off intercept TCZ 149^ bearing to PULKO.

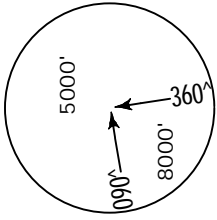
SID	ROUTING
ANBUN 1 (A-316)	From PULKO, heading 221^ to ANBUN.
LIVON 1 (T-554)	From PULKO, heading 218^ to LIVON.
LODAK 1 (W-8, UW-316)	From PULKO, heading 236^ to LODAK.

CHANGES: Chart reindexed, procedures renamed, revised.

VALIDO SOLO PARA SU USO EN SIMULADOR

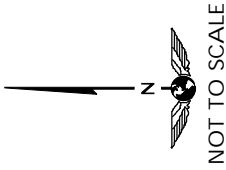
Apt Elev
1372'

Trans level: By ATC Trans alt: 5000'



MSA TCZ NDB

GAVOS 1 [GAVOS1], SIKIN 1 [SIKIN1]
DEPARTURES
(RWY 15)



VIPUVR
S17 37.6 W063 08.9



TROMPILLO
S17 48.2 W063 10.4

6 NM from TCZ
At or above
1800'



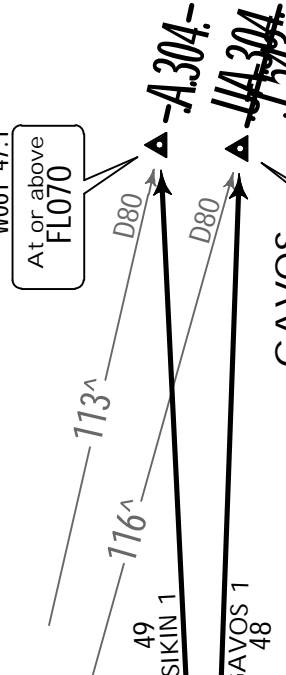
PALAG
S17 56.6
W062 38.1

SIKIN
S17 54.8
W061 47.1

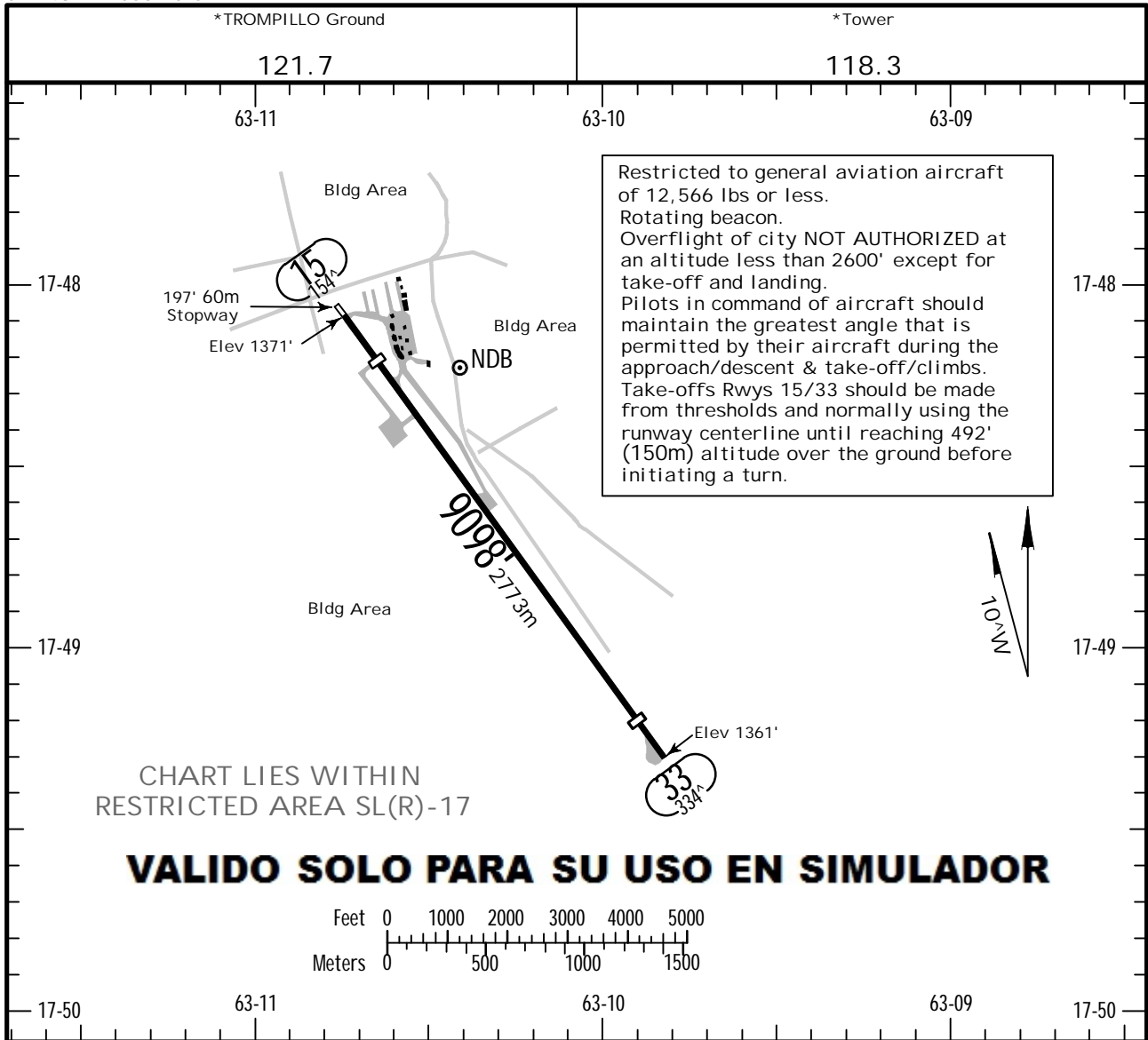
At or above
FLO70

GAVOS
S17 58.2 W061 47.9

At or above
FLO70



INITIAL CLIMB	
After take-off turn LEFT, climbing to 1800'. Intercept TCZ 148° bearing, then heading 109° to PALAG.	
SID	ROUTING
GAVOS 1 (T-543, UA-304)	From PALAG heading 103° to GAVOS.
SIKIN 1 (A-304)	From PALAG heading 099° to SIKIN.



Restricted to general aviation aircraft of 12,566 lbs or less.
 Rotating beacon.
 Overflight of city NOT AUTHORIZED at an altitude less than 2600' except for take-off and landing.
 Pilots in command of aircraft should maintain the greatest angle that is permitted by their aircraft during the approach/descent & take-off/climbs.
 Take-offs Rwy 15/33 should be made from thresholds and normally using the runway centerline until reaching 492' (150m) altitude over the ground before initiating a turn.

CHART LIES WITHIN RESTRICTED AREA SL(R)-17

VALIDO SOLO PARA SU USO EN SIMULADOR

ADDITIONAL RUNWAY INFORMATION

RWY		USABLE LENGTHS			WIDTH
		Threshold	Landing Beyond Glide Slope	TAKE-OFF	
15	RL	8159' 2487m			98' 30m
33		8199' 2499m			

TAKE-OFF		
AIR CARRIER (JAA)		
	LVP must be in Force All Rwys RCLM (DAY only) or RL	All Rwys RCLM (DAY only) or RL
A		
B	250m	400m
C		
D	300m	

CHANGES: Chart reindexed, airport elevation.

BRIEFING STRIP™

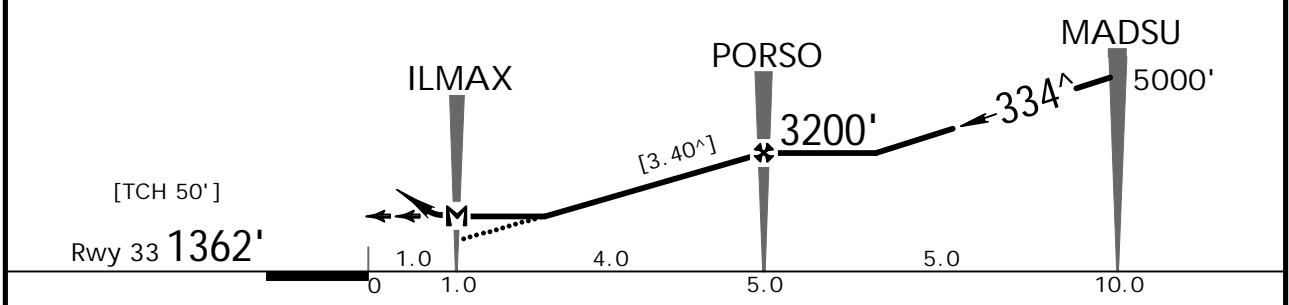
VIRU VIRU Approach 119.7		*TROMPILLO Tower 118.3			*Ground 121.7
RNAV	Final Apch Crs 334[^]	Minimum Alt PORSO 3200' (1838')	LNAV MDA(H) 1800' (438')	Apt Elev 1372' Rwy 33 1362'	<p>MSA ARP</p>
MISSED APCH: LEFT turn and climb to 4000' direct to TIPRO and follow 143 [^] and do a RIGHT hold. Request instructions from ATC. Turns not allowed before MAP.					
Alt Set: hPa		Rwy Elev: 49 hPa	Trans level: By ATC		Trans alt: 5000'

10
5
0
5



VALIDO SOLO PARA SU USO EN SIMULADOR

DISTANCE to THRESHOLD	1.0	2.0	3.0	4.0	5.0
ALTITUDE	1800'	2120'	2480'	2840'	3200'

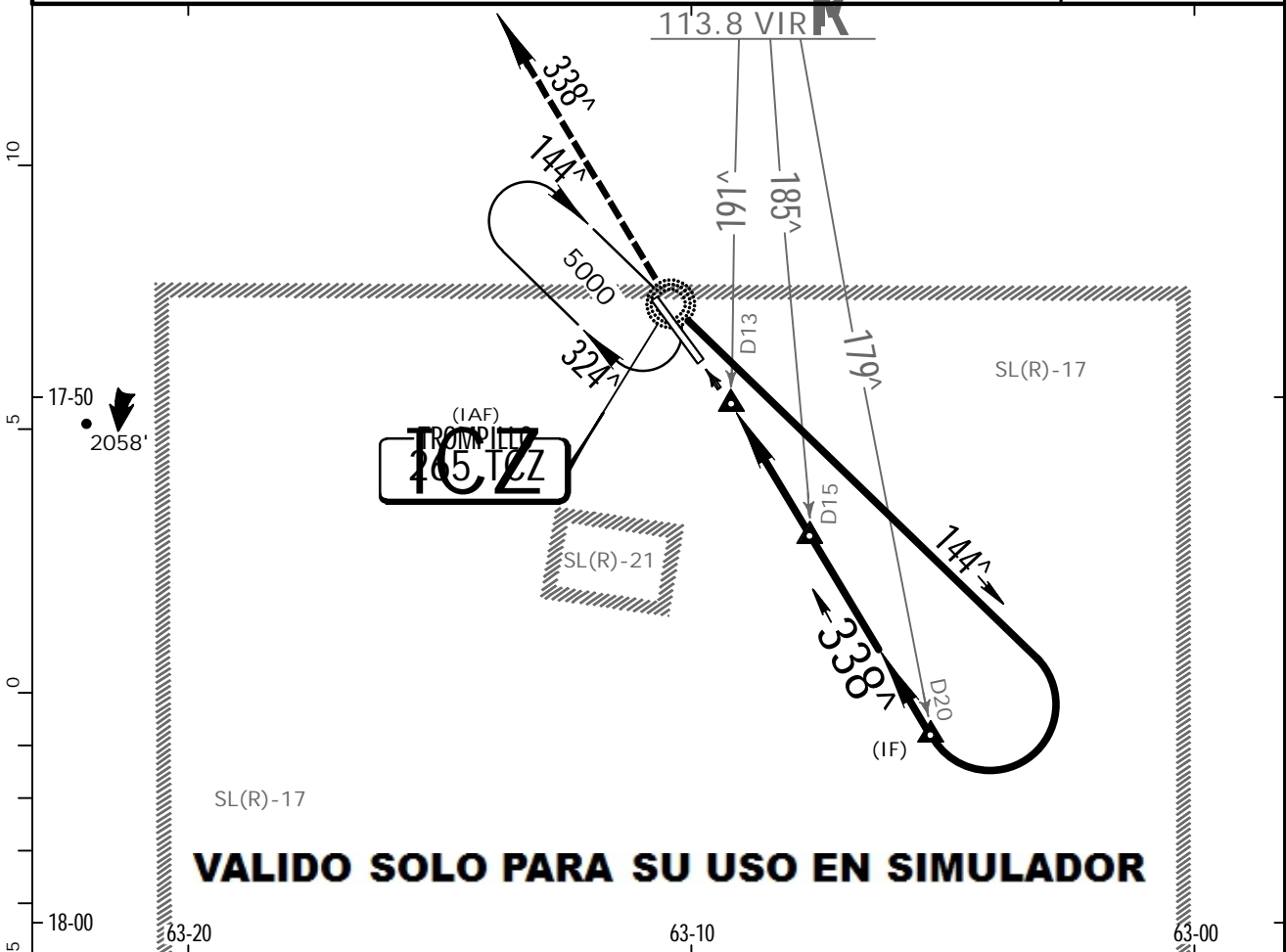


Gnd speed-Kts	70	90	100	120	140	160	4000' TIPRO
Descent Angle [3.40 [^]]	421	541	602	722	842	963	
MAP at ILMAX							
FAF to MAP	4.0	3:26	2:40	2:24	2:00	1:30	

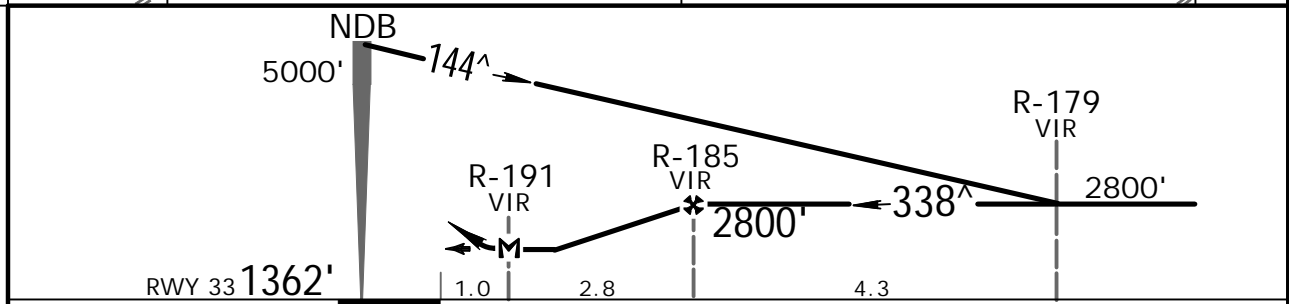
PANS OPS

STRAIGHT-IN LANDING RWY 33			CIRCLE-TO-LAND	
LNAV			MDA(H)	
MDA(H) 1800' (438')				
A	1900m		Max Kts 100	2100'(728')-2200m
B			135	
C	2000m		180	2200'(828')-2300m
D	NOT APPLICABLE		D	NOT APPLICABLE

VIRU VIRU Approach 119.7		*TROMPILLO Tower 118.3			*Ground 121.7
NDB TCZ 265	Final Apch Crs 338 [^]	Minimum Alt R-185 VIR 2800' (1438')	MDA(H) 1900' (538')	Apt Elev 1372' Rwy 33 1362'	
MISSED APCH: Climb on the 338 [^] bearing from TCZ NDB to 4000', then request instructions from CONTROL.					
Alt Set: hPa	Rwy Elev: 49 hPa	Trans level: By ATC	Trans alt: 5000'	MSA TCZ NDB	



VALIDO SOLO PARA SU USO EN SIMULADOR



Gnd speed-Kts	96	129	135	177	4000' on 265 TCZ ↑ 338 [^]
Rate of descent (feet/min)		711	947		
MAP at R-191 VIR					
FAF to MAP	2.8	1:23	1:20		

STRAIGHT-IN LANDING RWY 33		CIRCLE-TO-LAND Not Authorized North and Southeast of Airport.	
MDA(H) 1900' (538')		MDA(H)	
A	NOT APPLICABLE	A	NOT APPLICABLE
B	NOT APPLICABLE	B	NOT APPLICABLE
C	2000m	180	2150' (778')-3700m
D	NOT APPLICABLE	D	NOT APPLICABLE

PANS OPS

Chart changes since cycle 24-2012

ADD = added chart, REV = revised chart, DEL = deleted chart.

ACT	PROCEDURE IDENT	INDEX	REV DATE	EFF DATE
-----	-----------------	-------	----------	----------

SANTA CRUZ, (EL TROMPILLO - SLET)

TERMINAL CHART CHANGE NOTICES

No Chart Change Notices for Airport SLET