

# PARA USO EN AVIACION VIRTUAL UNICAMENTE

SLGY/GYA

Apt Elev 423'  
S10 49.1 W065 20.8

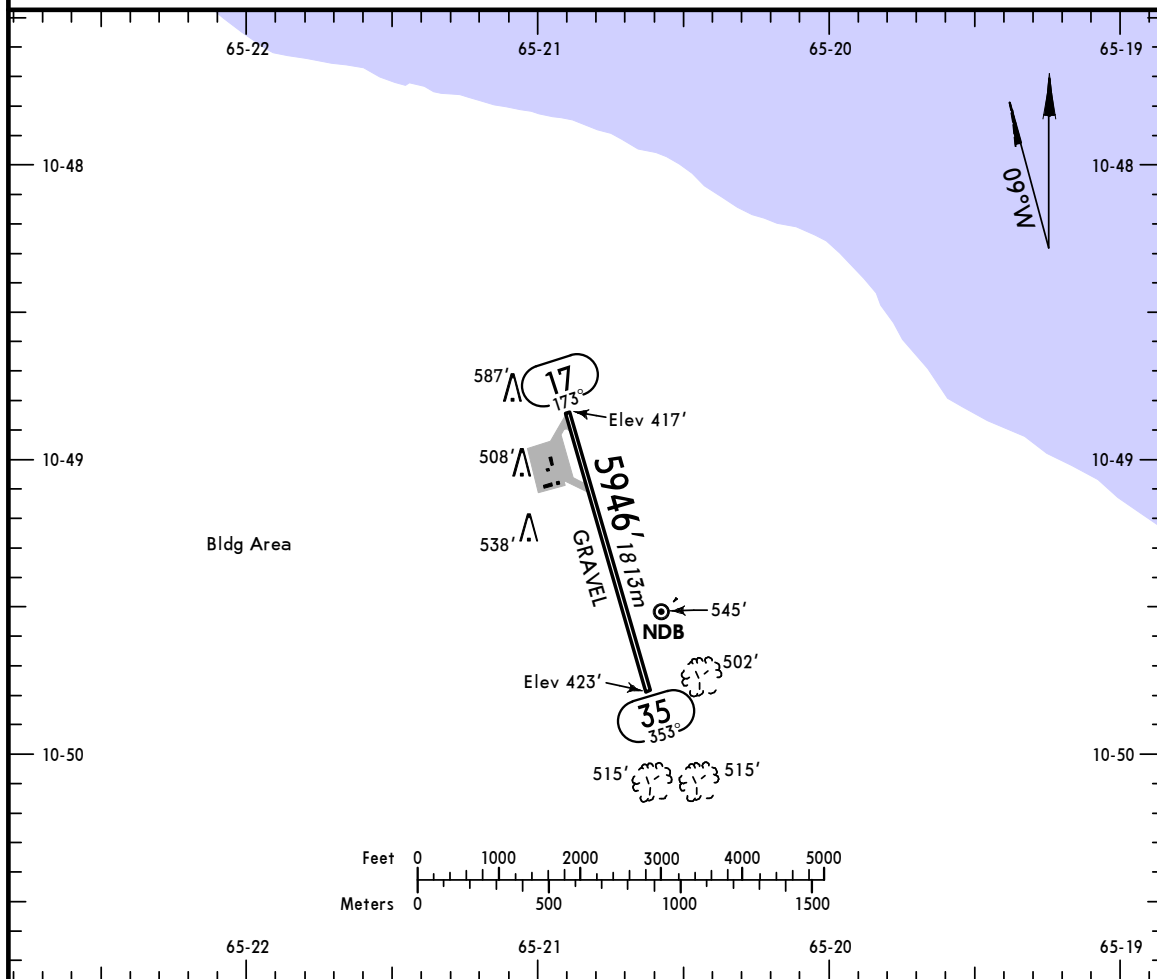


JEPPESSEN GUAYARAMERIN, BOLIVIA

24 JUL 09 (16-1)

CAP AV EMILIO BELTRAN

\*GUAYARAMERIN Tower 118.3



ADDITIONAL RUNWAY INFORMATION

RWY	USABLE LENGTHS	LANDING BEYOND	TAKE-OFF	WIDTH
17 35	Flares			98' 30m


# PARA USO EN AVIACION VIRTUAL UNICAMENTE

SLGY/GYA  
CAP AV EMILIO BELTRAN

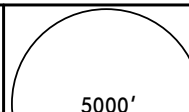
JEPPESSEN  
24 JUL 09 (16-1)

GUAYARAMERIN, BOLIVIA  
CAT A, B & C NDB-J Rwy 17

\*GUAYARAMERIN Tower 118.3

BRIEFING STRIP™

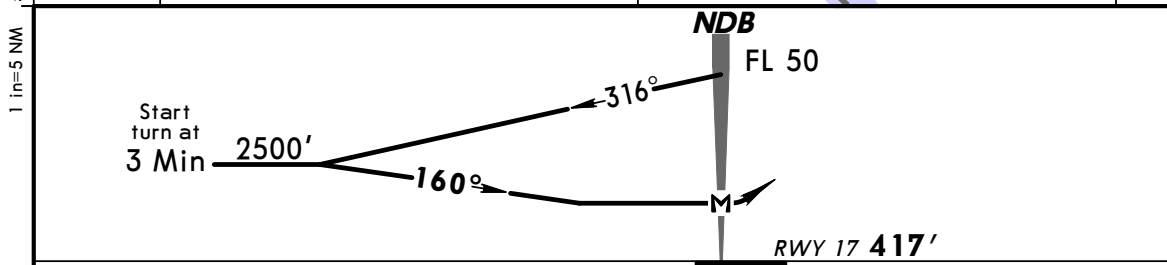
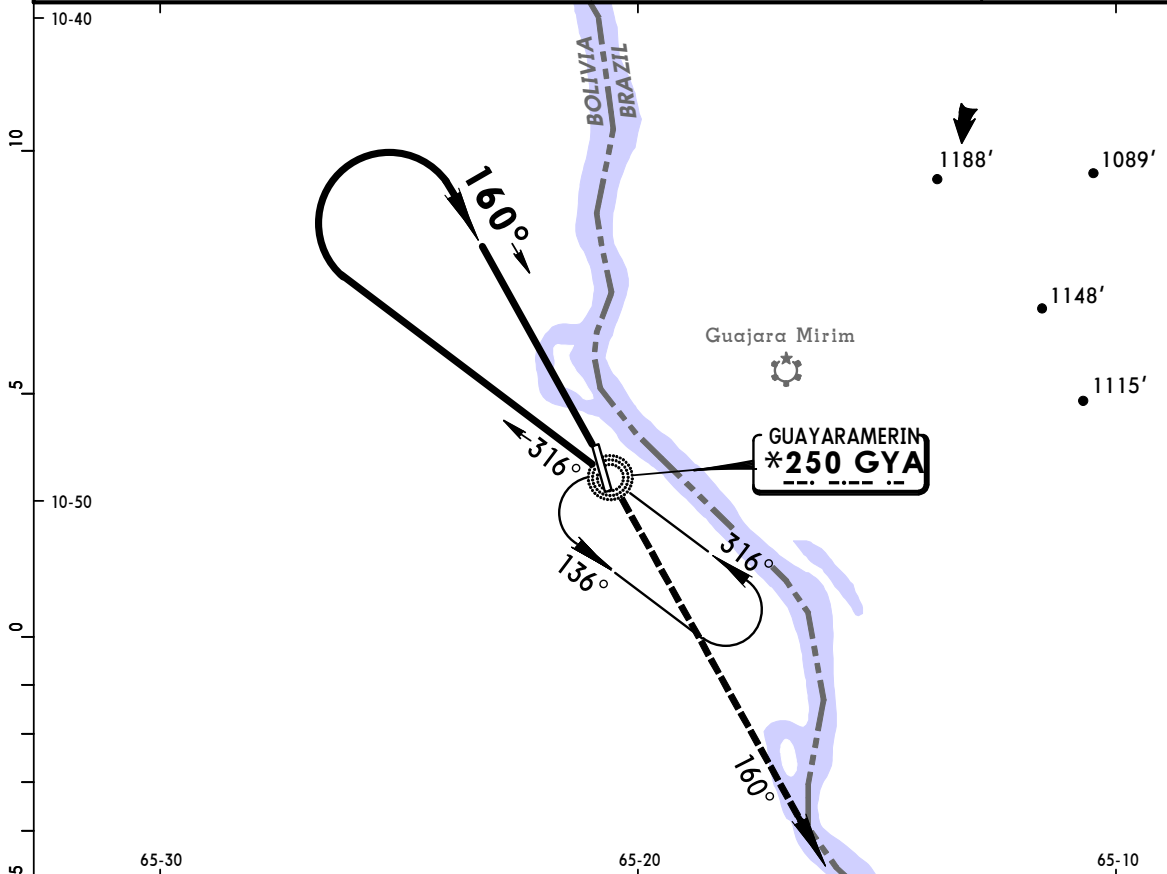
NDB GYA <b>*250</b>	Final Apch Crs <b>160°</b>	No FAF	MDA(H) (CONDITIONAL) <b>1160' (743')</b>	Apt Elev <b>423'</b> Rwy 17 <b>417'</b>
---------------------------	----------------------------------	--------	--	--



**MISSED APCH:** Climb on 160° bearing from GYA NDB to 5000' and request instructions from TOWER.

Alt Set: hPa    Rwy Elev: 15 hPa    Trans Level: By ATC    Trans alt: 4000'

MSA GYA NDB



						5000'	GYA
						↑	*250
MAP at NDB							160°

STRAIGHT-IN LANDING RWY17				CIRCLE-TO-LAND					
MDA(H) 1160' (743')		DAY		NIGHT		MDA(H) DAY		NIGHT	
A	1.6 km			NA		1160' (737') -3.6 km		NA	
B									
C	3.2 km								
D	NA								

PANS OPS

CHANGES: Chart format, chart re-indexed.

© JEPPESSEN, 2009. ALL RIGHTS RESERVED.

# PARA USO EN AVIACION VIRTUAL UNICAMENTE

SLGY/GYA

CAP AV EMILIO BELTRAN



JEPPESSEN GUAYARAMERIN, BOLIVIA

24 JUL 09 (16-2)

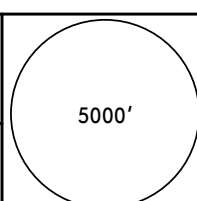
CAT A, B & C

NDB-I Rwy 35

\*GUAYARAMERIN Tower 118.3

BRIEFING STRIP™

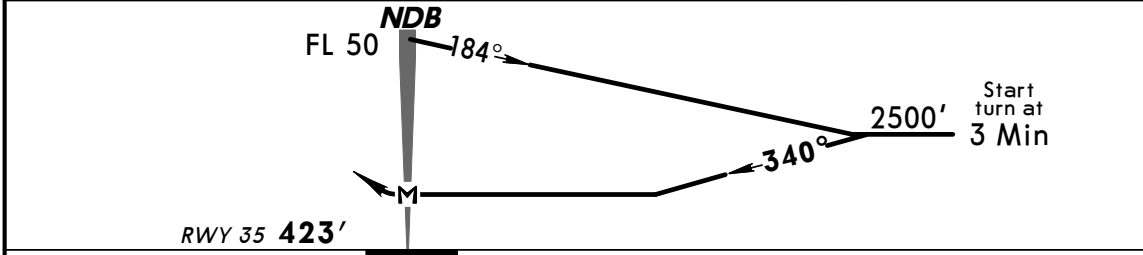
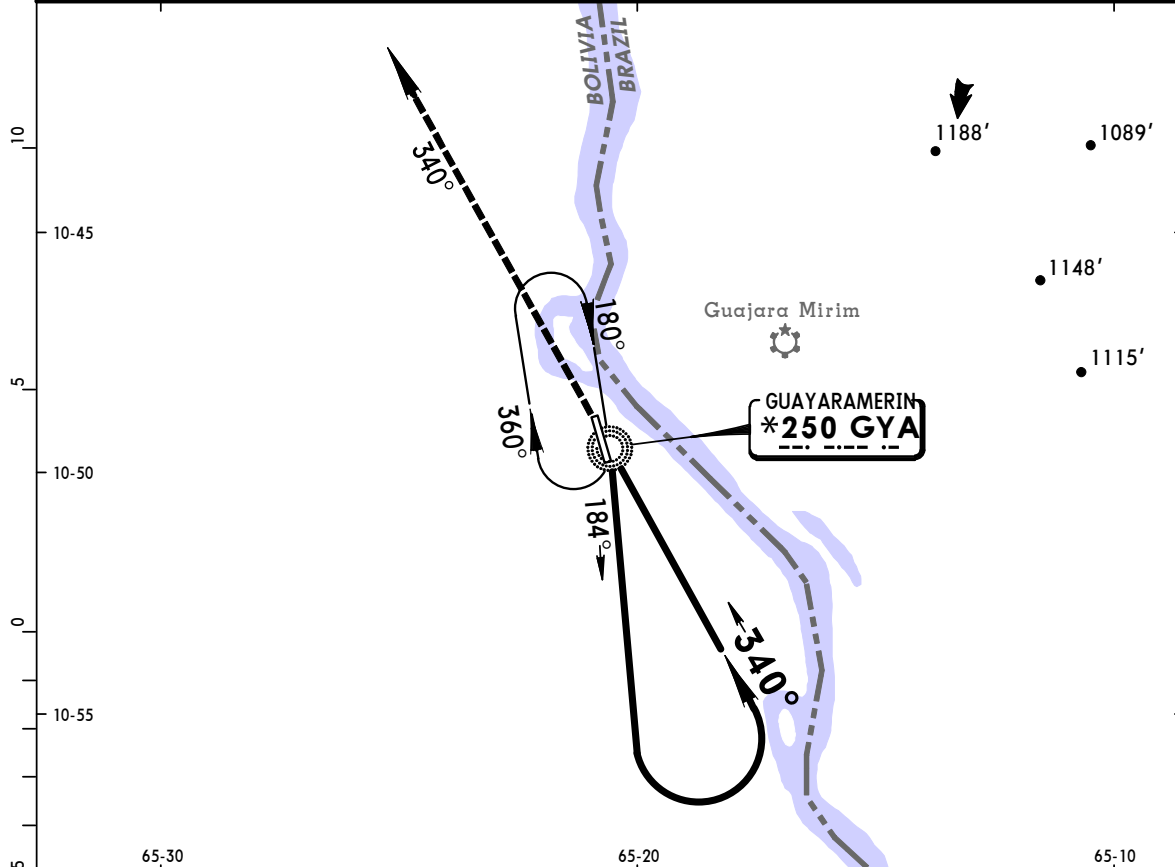
NDB GYA *250	Final Apch Crs 340°	No FAF	MDA(H) (CONDITIONAL) 1160' (737')	Apt Elev 423' Rwy 35 423'
--------------------	---------------------------	--------	---	------------------------------



MISSED APCH: Climb on 340° bearing from GYA NDB to 5000' and request instructions from TOWER.

Alt Set: hPa Rwy Elev: 15 hPa Trans Level: By ATC Trans altl: 4000'

MSA GYA NDB



				5000'	GYA
				↑	on *250
					340°

STRAIGHT-IN LANDING RWY35			CIRCLE-TO-LAND		
MDA(H) 1160' (737')			MDA(H)		
DAY		NIGHT	DAY		NIGHT
A	1.6 km	NA	100	1160' (737') - 3.6 km	NA
B			135		
C	3.2 km		180		
D	NA	D	NA		

PANS OPS