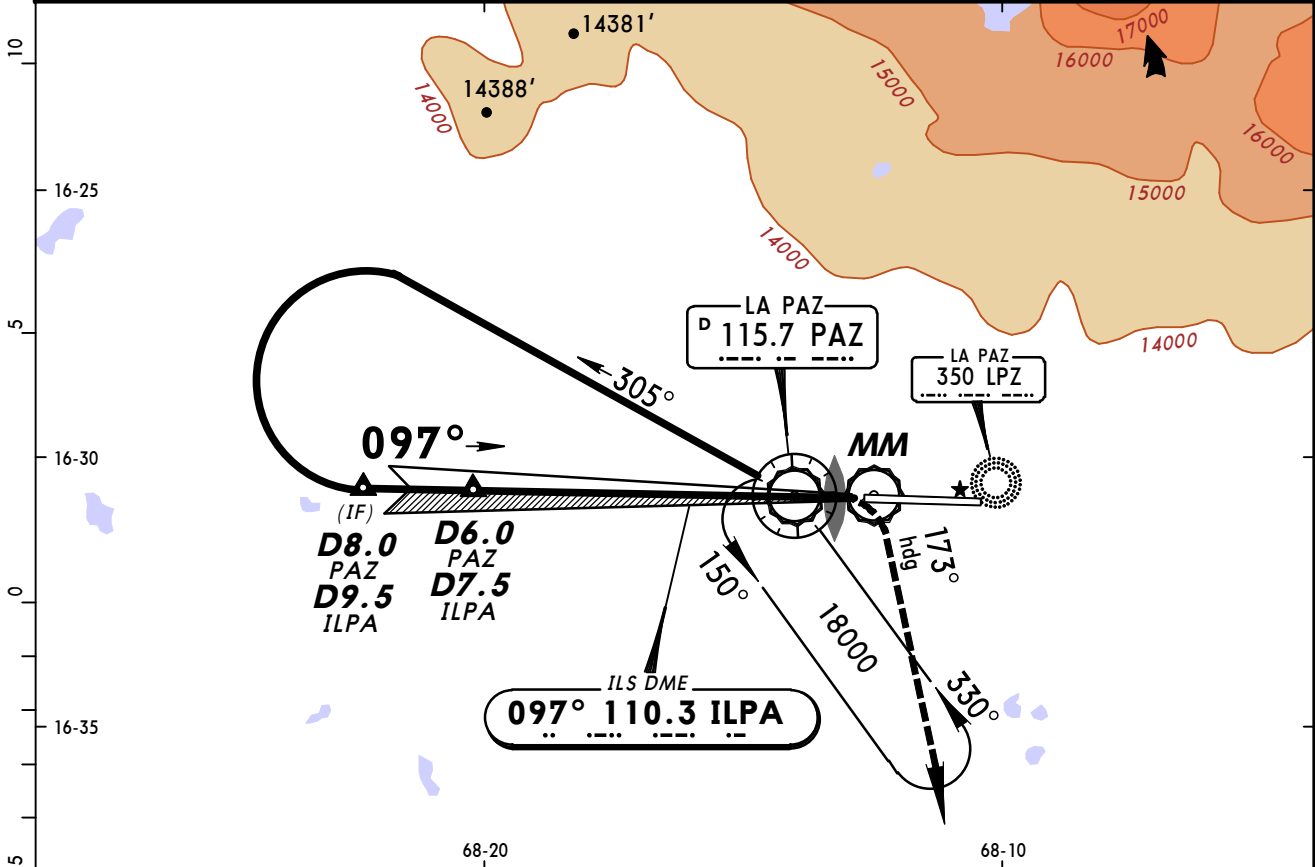
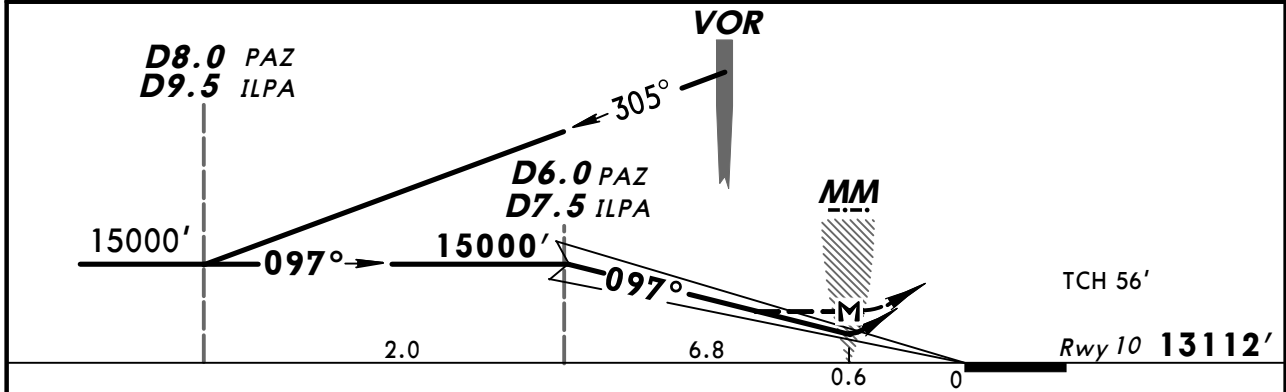


LA PAZ Approach 119.5		LA PAZ Tower 118.3		Ground 121.9
LOC ILPA 110.3	Final Apch Crs 097°	Minimum Alt D6.0 PAZ D7.5 ILPA 15000' (1888')	ILS DA(H) 13330' (218')	Apt Elev 13313' Rwy 10 13112'
MISSED APCH: Turn RIGHT and follow 173° heading climbing to 17000', request instructions from CONTROL.				
Alt Set: hPa		Rwy Elev: 397 hPa	Trans level: By ATC	Trans alt: 18000'
1. Max IAS 200 Kts.				MSA PAZ VOR



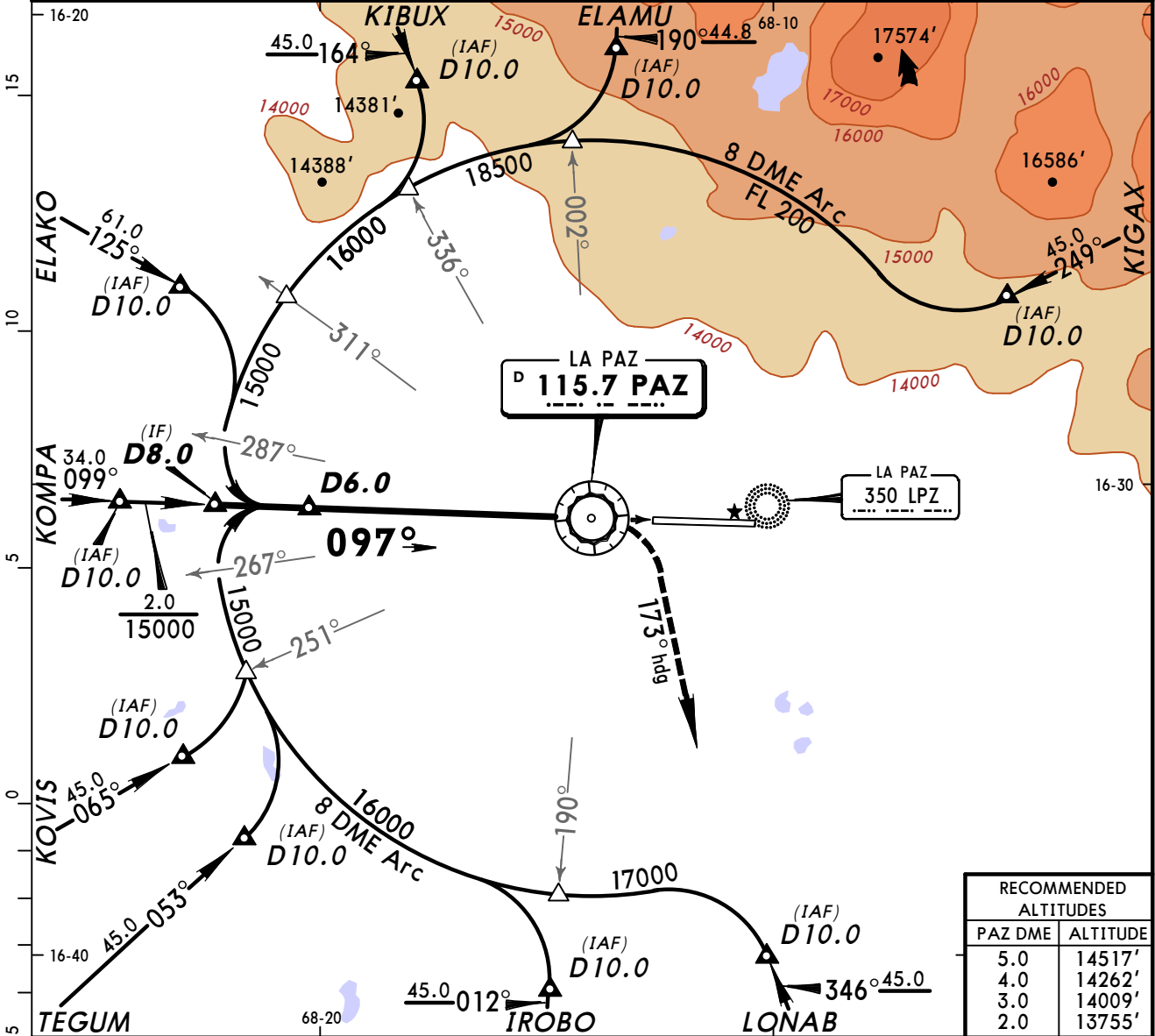
LOC (GS out)	PAZ DME ALTITUDE	5.0 14517'	4.0 14263'	3.0 14009'	2.0 13755'
--------------	------------------	---------------	---------------	---------------	---------------



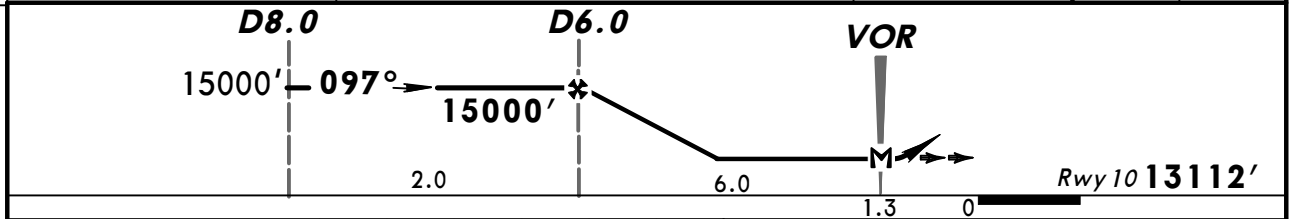
Gnd speed-Kts	70	90	100	120	140	160	REIL PAPI	RT	173° hdg	17000'
GS	2.40°	302	389	432	518	605				
MAP at MM or D6.0 PAZ/D7.5 ILPA to MAP 6.8	5:50	4:32	4:05	3:24	2:55	2:33				

STRAIGHT-IN LANDING RWY 10				CIRCLE-TO-LAND				CIRCLING Not Authorized
ILS		LOC (GS out)		ILS		LOC (GS out)		
DA(H) 13330' (218')		MDA(H) 13420' (308')		DA(H) 13330' (218')		MDA(H) 13420' (308')		
FULL		ALS out		FULL		ALS out		
A				Max Kts	100	14100' (787')-1900m		
B				135	14100' (787')-2800m			
C	800m	1200m	1600m	180	14200' (887')-3700m			
D			1600m	205	14200' (887')-4600m			

LA PAZ Approach 119.5		LA PAZ Tower 118.3			Ground 121.9
VOR PAZ 115.7	Final Apch Crs 097°	Minimum Alt D6.0 15000' (1888')	MDA(H) 13500' (388')	Apt Elev 13313'	
MISSED APCH: Turn RIGHT and follow 173° heading climbing to 17000', request instructions from CONTROL.					
Alt Set: hPa		Rwy Elev: 397 hPa	Trans level: By ATC		Trans alt: 18000'



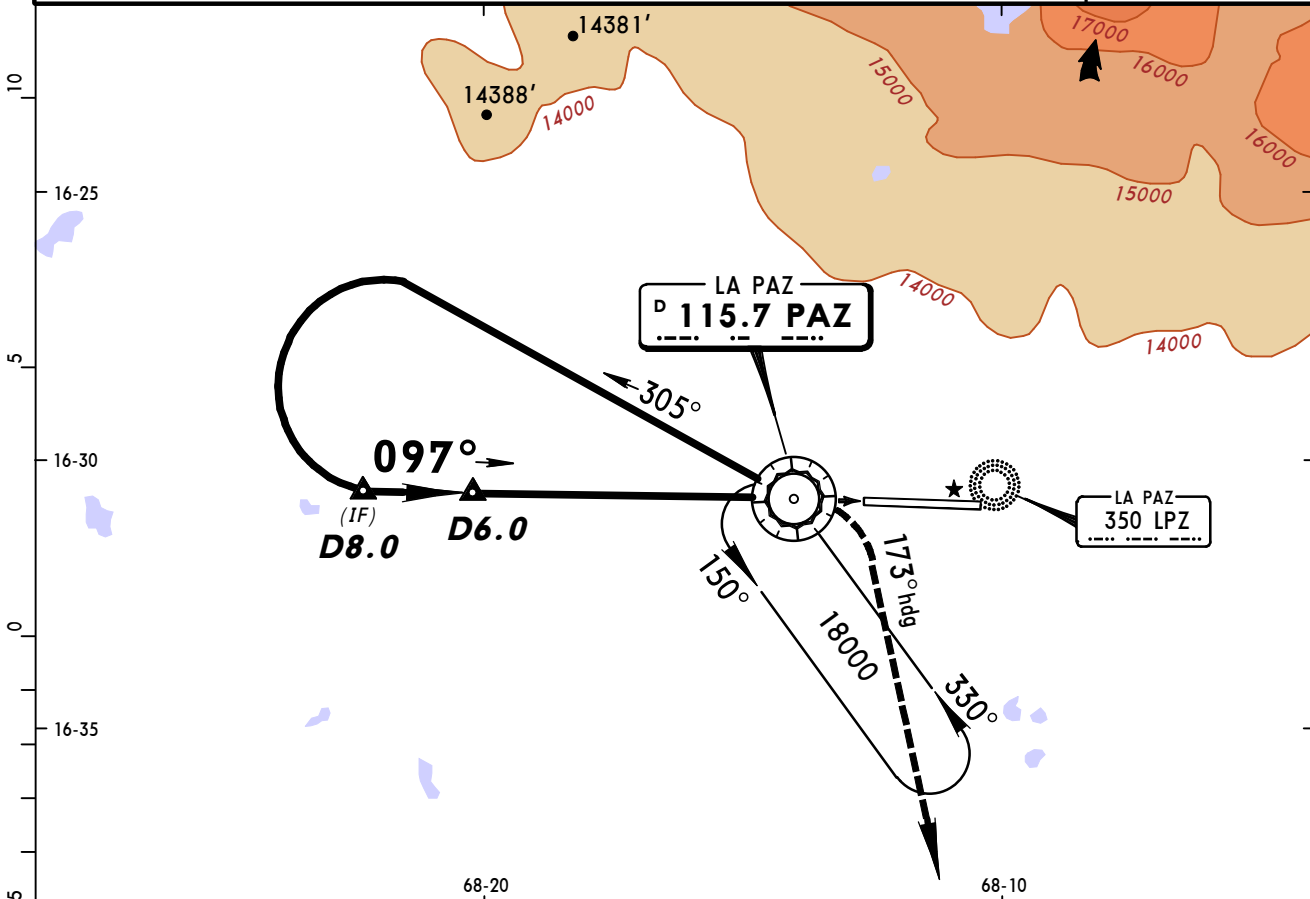
RECOMMENDED ALTITUDES	
PAZ DME	ALTITUDE
5.0	14517'
4.0	14262'
3.0	14009'
2.0	13755'



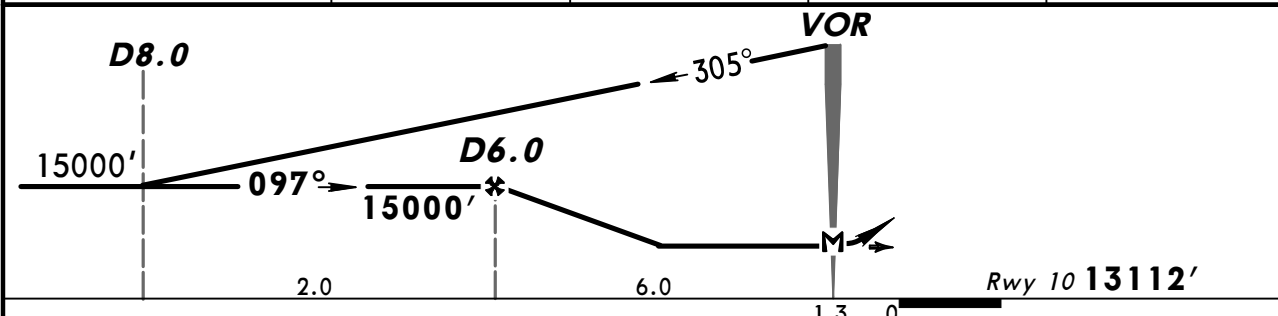
Gnd speed-Kts	70	90	100	120	140	160	REIL PAPI ALS 	RT 173° hdg 17000'
MAP at VOR or D6.0 to MAP	6.0	5:09	4:00	3:36	3:00	2:34		

STRAIGHT-IN LANDING RWY10		CIRCLE-TO-LAND		CIRCLING Not Authorized 	
MDA(H) 13500' (388')		MDA(H)			
PANS OPS 3	A	1600m	Max Kts	100	14100' (787')-1900m
	B		135	14100' (787')-2800m	
	C		180	14200' (887')-3700m	
	D		205	14200' (887')-4600m	

LA PAZ Approach		LA PAZ Tower			Ground
119.5		118.3			121.9
VOR PAZ 115.7	Final Apth Crs 097°	Minimum Alt D6.0 15000' (1888')	MDA(H) 13500' (388')	Apt Elev 13313' Rwy 10 13112'	<p>MSA PAZ VOR</p>
MISSED APCH: Turn RIGHT and follow 173° heading climbing to 17000', request instructions from CONTROL.					
Alt Set: hPa		Rwy Elev: 397 hPa	Trans level: By ATC		Trans alt: 18000'
1. Max IAS 200 Kts.					



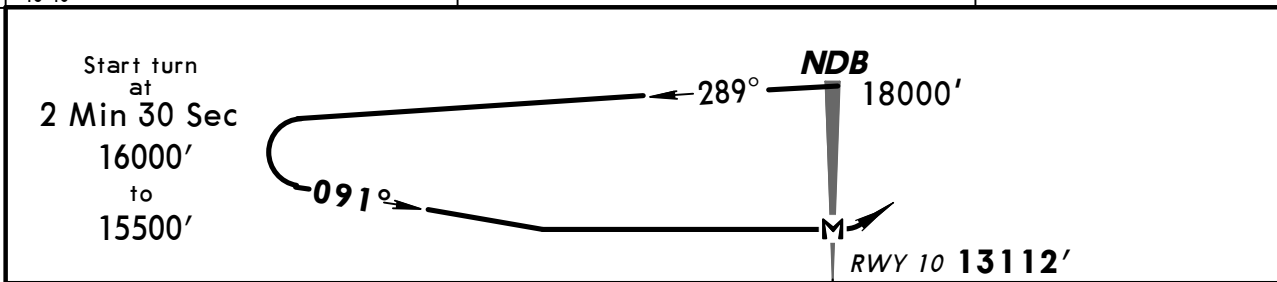
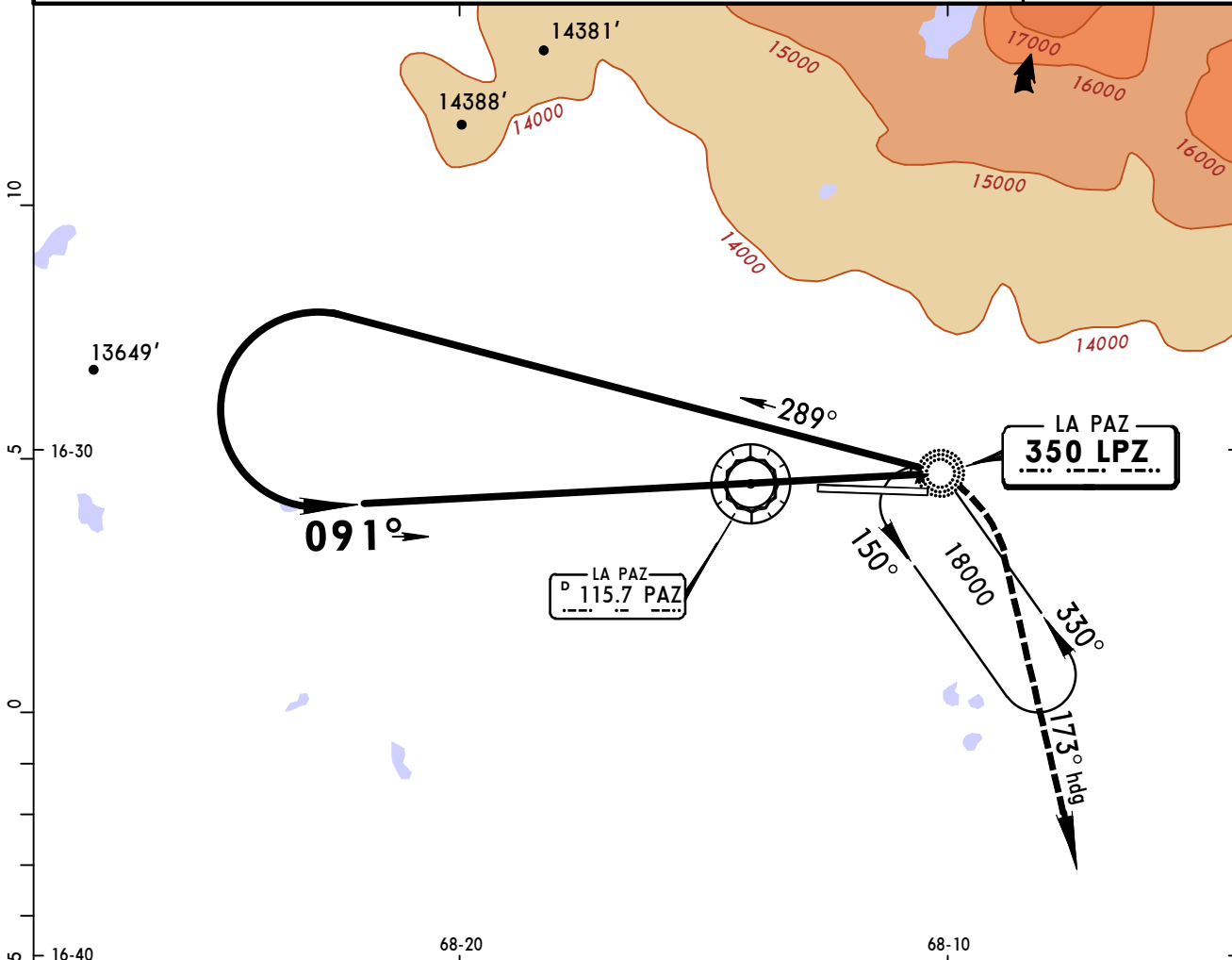
PAZ DME	5.0	4.0	3.0	2.0
ALTITUDE	14517'	14262'	14009'	13755'



Gnd speed-Kts	70	90	100	120	140	160	ALS REIL PAPI RT	173° hdg 17000'
MAP at VOR or D6.0 to MAP	6.0	5:09	4:00	3:36	3:00	2:34		

STRAIGHT-IN LANDING RWY 10		CIRCLE-TO-LAND		CIRCLING Not Authorized
MDA(H) 13500' (388')		MDA(H)		
PANS OPS 3	ALS out	Max Kts.	MDA(H)	
		100	14100' (787')-1900m	
		135	14100' (787')-2800m	
		180	14200' (887')-3700m	
	205	14200' (887')-4600m		

LA PAZ Approach 119.5		LA PAZ Tower 118.3		Ground 121.9	
NDB LPZ 350	<i>Final Apch Crs</i> 091°	No FAF	<i>MDA(H)</i> 13900' (788')	<i>Apt Elev</i> 13313' RWY 10 13112'	
MISSED APCH: Turn RIGHT and follow 173° heading climbing to 17000', request instructions from CONTROL.					
Alt Set: hPa		Rwy Elev: 397 hPa	Trans level: By ATC	Trans alt: 18000'	



Start turn at 2 Min 30 Sec 16000' to 15500'				NDB 18000'	REIL PAPI	ALS	RT	173° hdg	17000'
MAP at NDB									

STRAIGHT-IN LANDING RWY10		CIRCLE-TO-LAND		CIRCLING Not Authorized
<i>MDA(H)</i> 13900' (788')		<i>MDA(H)</i>		
ALS out		Max Kts		
A	NOT APPLICABLE	A	NOT APPLICABLE	
B	1600m	135	13930' (617')-2800m	
C	3600m	180	14100' (787')-3700m	
D	NOT APPLICABLE	D	NOT APPLICABLE	

Chart changes since cycle 24-2012

ADD = added chart, REV = revised chart, DEL = deleted chart.

ACT	PROCEDURE IDENT	INDEX	REV DATE	EFF DATE
-----	-----------------	-------	----------	----------

LA PAZ, (EL ALTO INTL - SLLP)

TERMINAL CHART CHANGE NOTICES

No Chart Change Notices for Airport SLLP