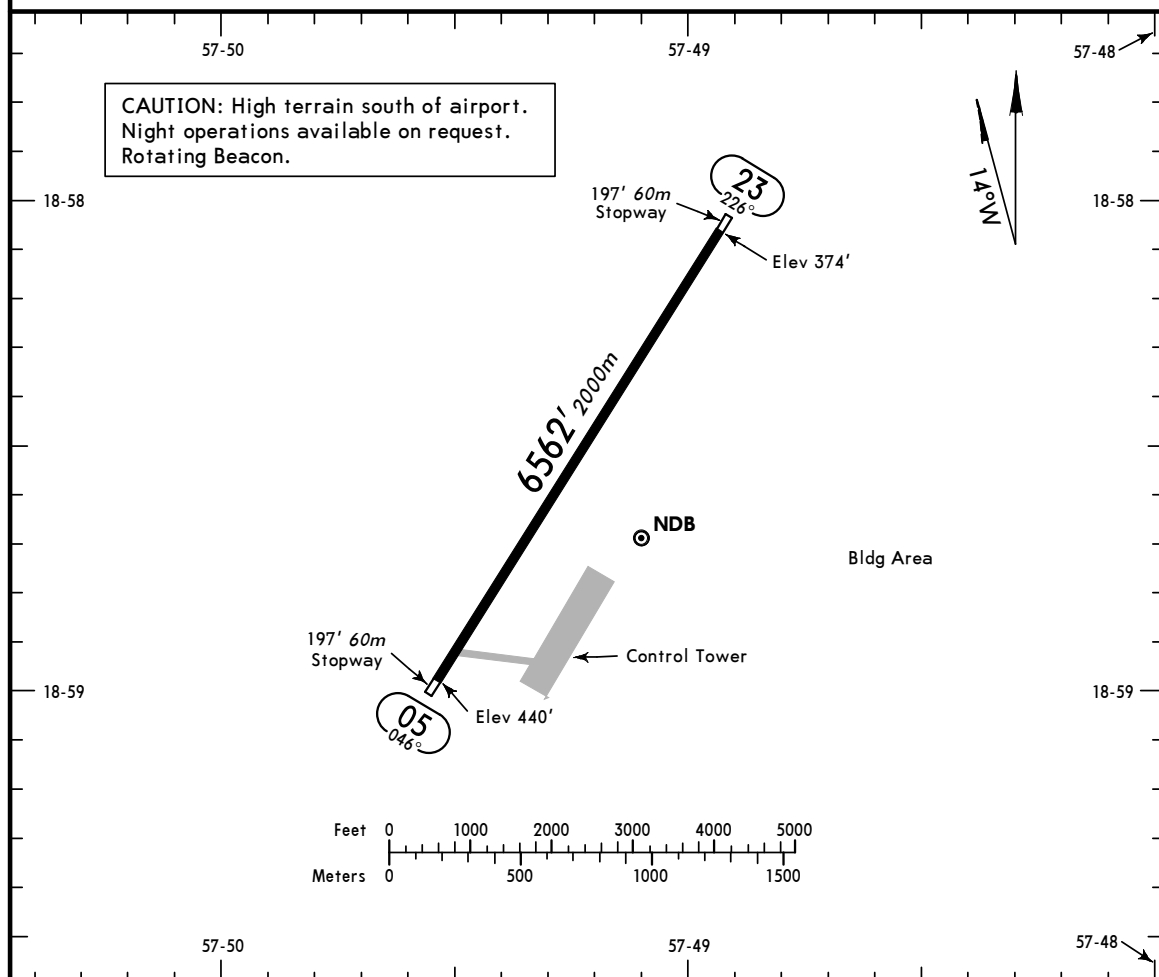


PARA USO EN AVIACION VIRTUAL UNICAMENTE

SLPS/PSZ
 Apt Elev **439'**
 S18 58.8 W057 49.4

JEPPESEN PUERTO SUAREZ, BOLIVIA
 15 DEC 06 **(16-1)** TTE AV SALVADOR OGAYA INTL

*PUERTO SUAREZ Tower 118.5



ADDITIONAL RUNWAY INFORMATION

| RWY | USABLE LENGTHS | WIDTH | | | |
|----------|----------------|-------------|--------------------------|-------------|----------|
| | | | LANDING BEYOND Threshold | Glide Slope | TAKE-OFF |
| 05 23 | RL PAPI-L | 118' 36m | | | |
| | | | | | |
| | | | | | |
| | | | | | |
| | | | | | |

| | TAKE-OFF | | | | FOR FILING AS ALTERNATE | |
|-----------|-------------------------|-------|------------------------------|-------|-------------------------|-------------|
| | AIR CARRIER All Rwys | | GENERAL AVIATION All Rwys | | DAY | NIGHT |
| | DAY | NIGHT | DAY | NIGHT | | |
| 2 Eng | 1.6 km | NA | 180m-2.4 km | NA | A B C D | 335m-5.2 km |
| 3 & 4 Eng | 0.8 km | | | | | |

PARA USO EN AVIACION VIRTUAL UNICAMENTE

SLPS/PSZ
TTE AV SALVADOR OGAYA

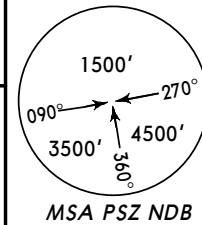
JEPPESEN PUERTO SUAREZ, BOLIVIA

10-2 29 JUL 05

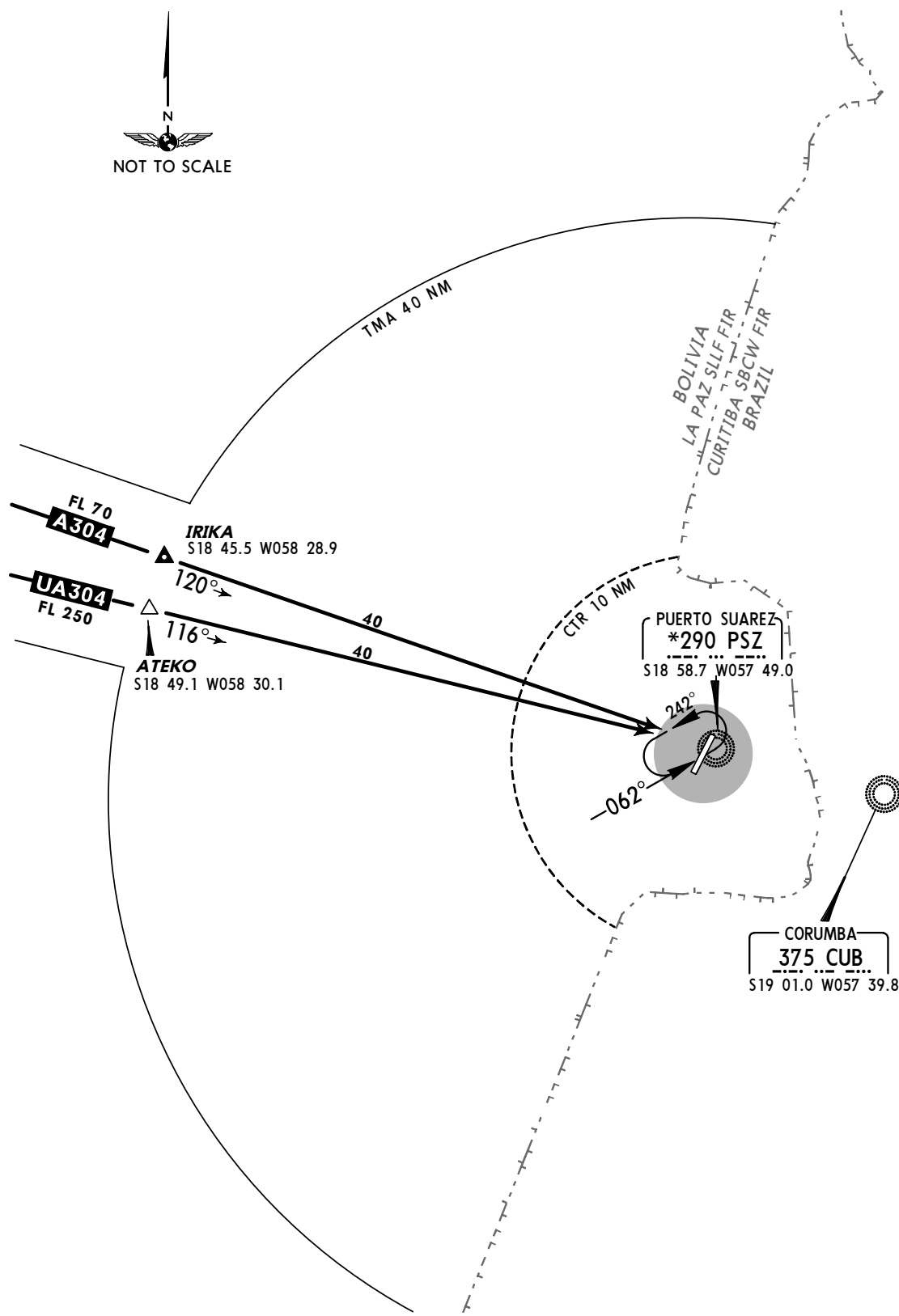
ARRIVAL

Apt Elev
439'

Alt Set: hPa Trans level: By ATC Trans alt: 4000'

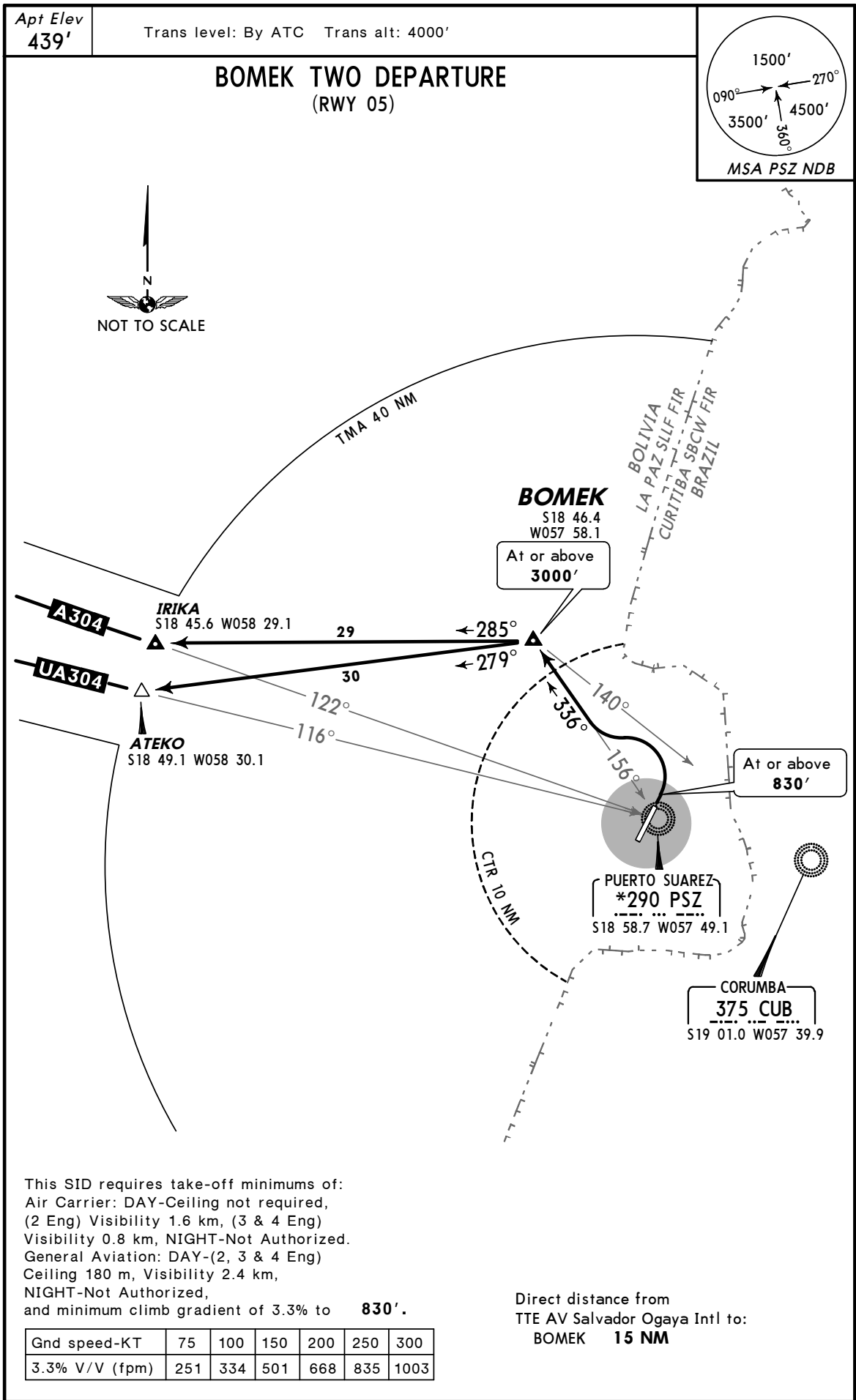


ARRIVAL ROUTES AND TRAFFIC TO PUERTO SUAREZ TMA



PARA USO EN AVIACION VIRTUAL UNICAMENTE

SLPS/PSZ  **JEPPESEN** PUERTO SUAREZ, BOLIVIA
 TTE AV SALVADOR OGAYA INTL 10-3 6 FEB 09 SID

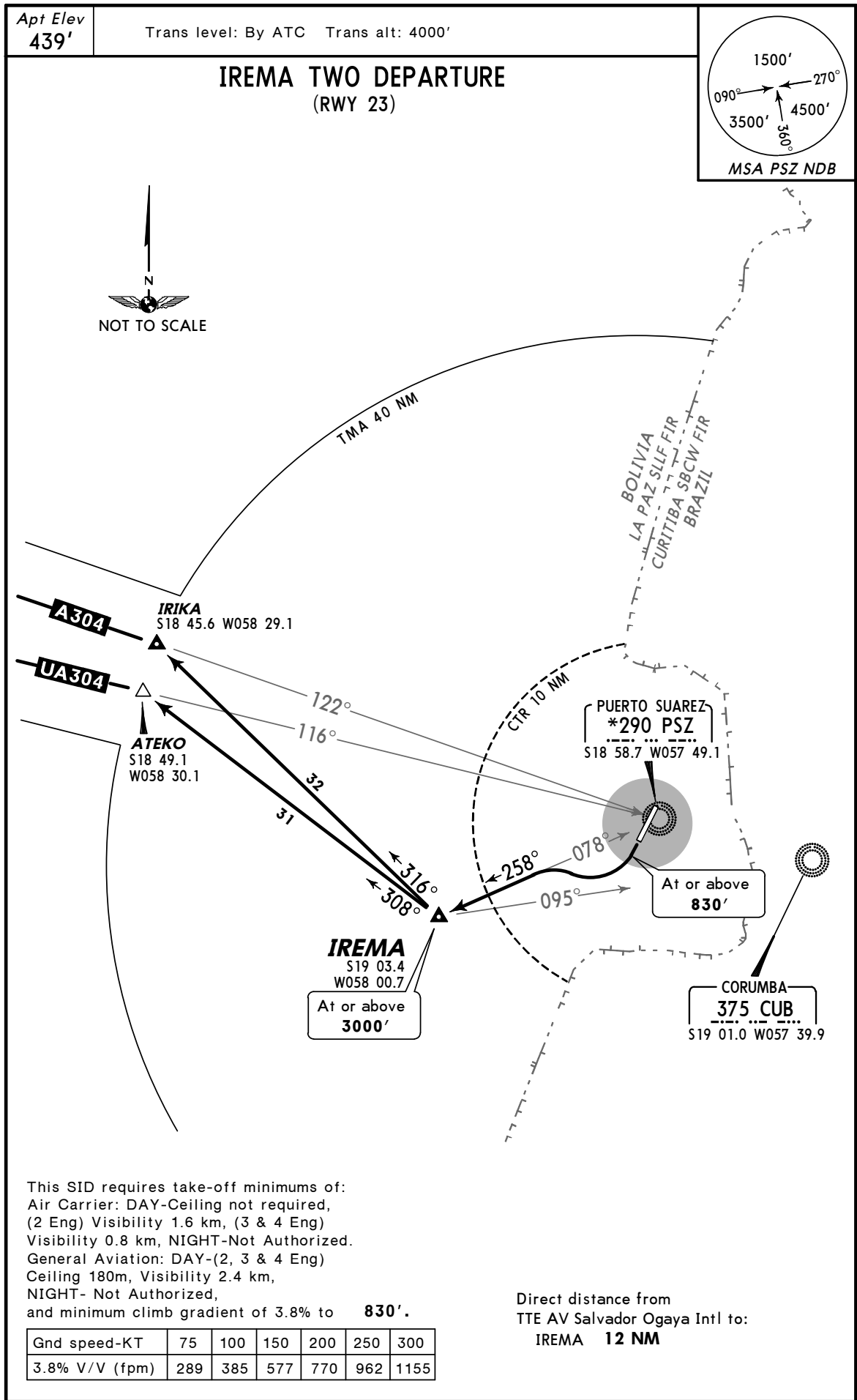


CHANGES: Procedure bearings, CUB, IRIKA and PSZ coordinates.

© JEPPESEN, 2005, 2009. ALL RIGHTS RESERVED.

PARA USO EN AVIACION VIRTUAL UNICAMENTE

SLPS/PSZ **JEPPESEN** PUERTO SUAREZ, BOLIVIA
 TTE AV SALVADOR OGAYA INTL (10-3A) 6 FEB 09 **SID**



This SID requires take-off minimums of:
 Air Carrier: DAY-Ceiling not required,
 (2 Eng) Visibility 1.6 km, (3 & 4 Eng)
 Visibility 0.8 km, NIGHT-Not Authorized.
 General Aviation: DAY-(2, 3 & 4 Eng)
 Ceiling 180m, Visibility 2.4 km,
 NIGHT- Not Authorized,
 and minimum climb gradient of 3.8% to **830'**.

| | | | | | | |
|----------------|-----|-----|-----|-----|-----|------|
| Gnd speed-KT | 75 | 100 | 150 | 200 | 250 | 300 |
| 3.8% V/V (fpm) | 289 | 385 | 577 | 770 | 962 | 1155 |

Direct distance from
 TTE AV Salvador Ogaya Intl to:
IREMA 12 NM

PARA USO EN AVIACION VIRTUAL UNICAMENTE

SLPS/PSZ

JEPPESEN PUERTO SUAREZ, BOLIVIA

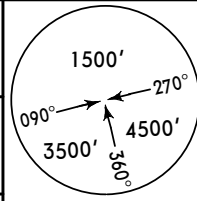
TTE AV SALVADOR OGAYA INTL 15 DEC 06 (16-1)

NDB-1 Rwy 23

*PUERTO SUAREZ Tower 118.5

BRIEFING STRIP™

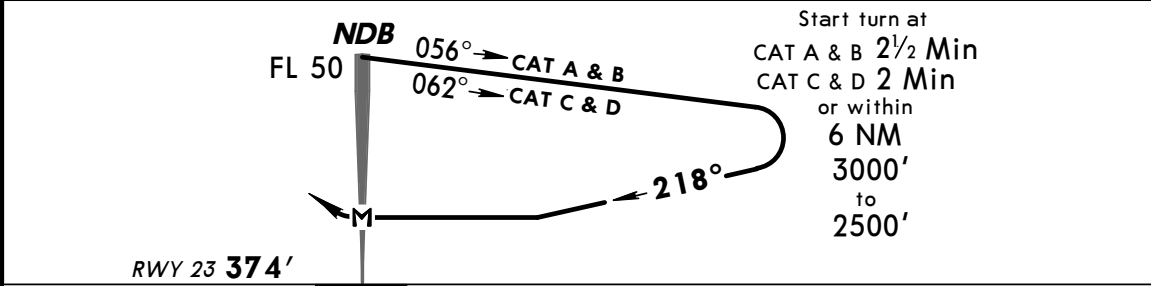
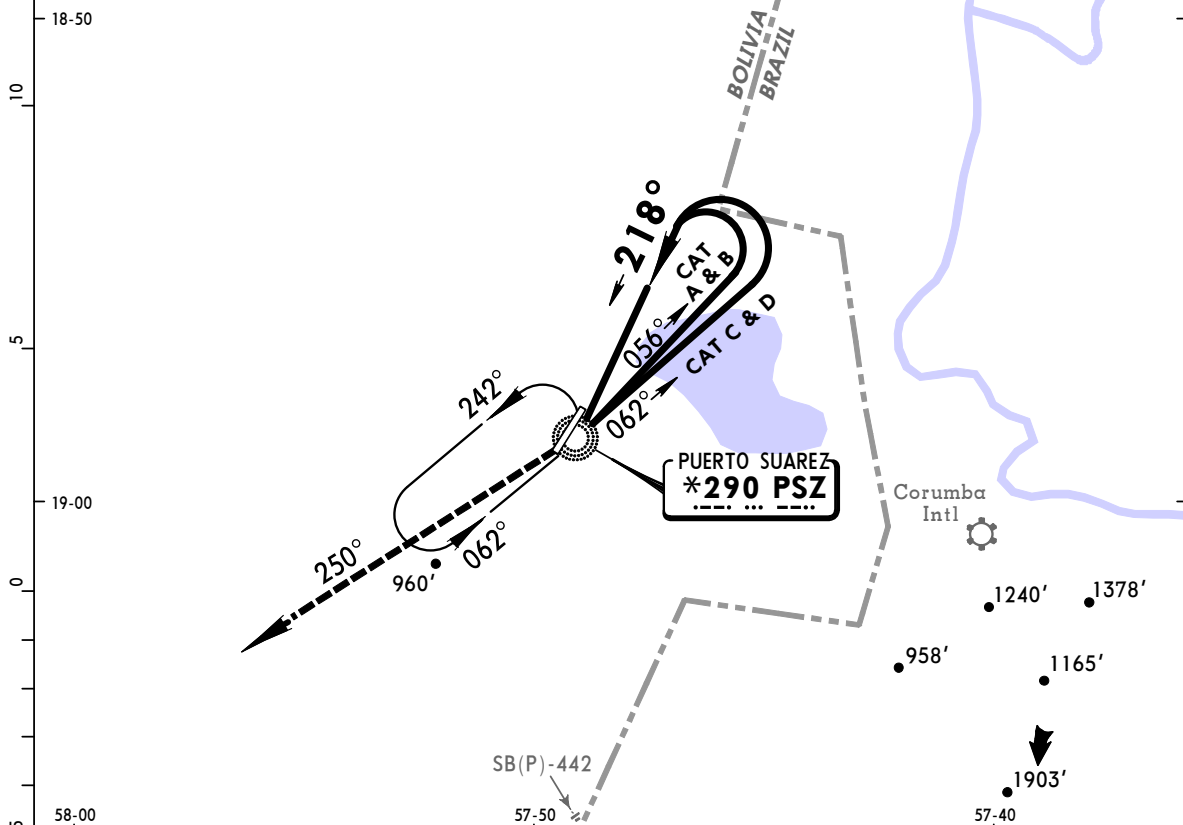
| | | | | |
|--------------------|---------------------------|--------|--|------------------------------|
| NDB PSZ *290 | Final Apch Crs 218° | No FAF | MDA(H) (CONDITIONAL) 840' (466') | Apt Elev 439' Rwy 23 374' |
|--------------------|---------------------------|--------|--|------------------------------|



MISSED APCH: Climb on the 250° bearing from PSZ NDB until reaching 3000' and request instructions from CONTROL.

Alt Set: hPa Rwy Elev: 14 hPa Trans level: By ATC Trans alt: 4000'

MSA PSZ NDB



| | | |
|------------|-------|-------------|
| MAP at NDB | 3000' | PSZ on *290 |
| | ↑ | 250° |

| STRAIGHT-IN LANDING RWY23 | | CIRCLE-TO-LAND | |
|---------------------------|-------|--------------------------------|-----------------------|
| MDA(H) 840' (466') | | Not Authorized East of Airport | |
| DAY | NIGHT | Max Kts | MDA(H) |
| A | NA | 100 | 1030' (591') - 2.4 km |
| B | | 135 | |
| C | | 180 | |
| D | | 205 | |
| | | | 1130' (691') - 3.6 km |

PANS OPS 3

CHANGES: Runway ident.

© JEPPESEN SANDERSON, INC., 2005, 2006. ALL RIGHTS RESERVED.

PARA USO EN AVIACION VIRTUAL UNICAMENTE

SLPS/PSZ
TTE AV SALVADOR OGAYA

JEPPESSEN PUERTO SUAREZ, BOLIVIA
15 DEC 06 (16-2) NDB Rwy 05-23

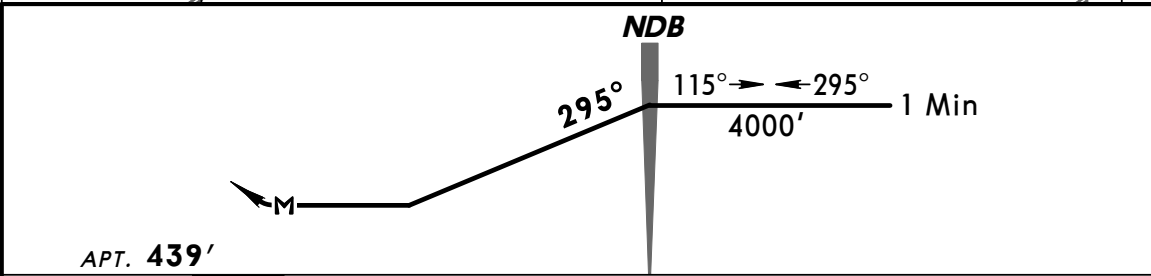
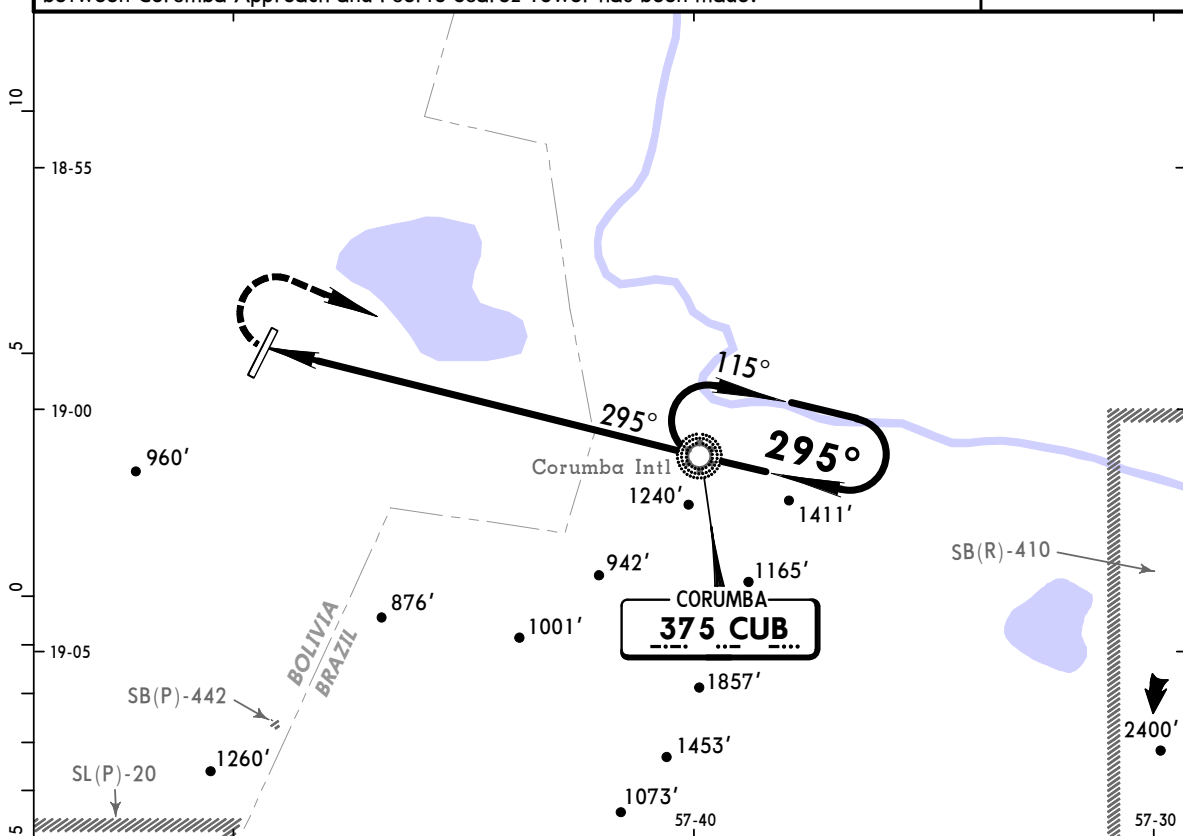
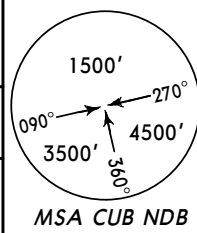
*PUERTO SUAREZ Tower 118.5

BRIEFING STRIP™

| | | | | |
|--------------------------|----------------------------------|--------|--------------------------------|----------------------|
| NDB CUB 375 | Final Apch Crs 295° | No FAF | MDA(H) Refer to Minimums | Apt Elev 439' |
|--------------------------|----------------------------------|--------|--------------------------------|----------------------|

MISSED APCH: Turn **RIGHT** climbing to 4000' and proceed to CUB NDB. Request instructions from CONTROL.

Alt Set: hPa Apt Elev: 16 hPa Trans level: By ATC Trans alt: 4000'
1. This procedure is usable when PSZ NDB is out of service and previous coordination between Corumba Approach and Puerto Suarez Tower has been made.



| | | | | | | | | | | |
|---------------|-----|------|------|------|------|------|-----------------------------------|--------------------|-------------------|------|
| Gnd speed-Kts | 70 | 90 | 100 | 120 | 140 | 160 | Lighting - Refer to Airport Chart | 4000' RT | CUB 375 | |
| NDB to MAP | 8.0 | 6:51 | 5:20 | 4:48 | 4:00 | 3:26 | | | | 3:00 |

| STRAIGHT-IN LANDING | | CIRCLE-TO-LAND | |
|---------------------|---|----------------|-----------------------|
| | | DAY | NIGHT |
| PANS OPS 3 | A | Max Kts | MDA(H) |
| | B | 100 | |
| | C | 135 | 1030' (591') - 2.4 km |
| | D | 180 | 1130' (691') - 3.6 km |
| NA | | 205 | NA |

CHANGES: Runway ident.

© JEPPESEN SANDERSON, INC., 2005, 2006. ALL RIGHTS RESERVED.