

List of pages in this Trip Kit

Trip Kit Index

Airport Information For SLRQ

Terminal Charts For SLRQ

Revision Letter For Cycle 25-2012

Change Notices

Notebook

General Information

Location: Rurrenabaque Bol
IATA Code: RBQ
Lat/Long: S14° 25.6' W067° 29.9'
Elevation: 666 ft

Airport Use: Public
Magnetic Variation: 8.1°W

Customs: No
Airport Type: IFR
Landing Fee: No
Control Tower: Yes
Jet Start Unit: No
LLWS Alert: No
Beacon: No

Sunrise: 1030 Z
Sunset: 2257 Z,

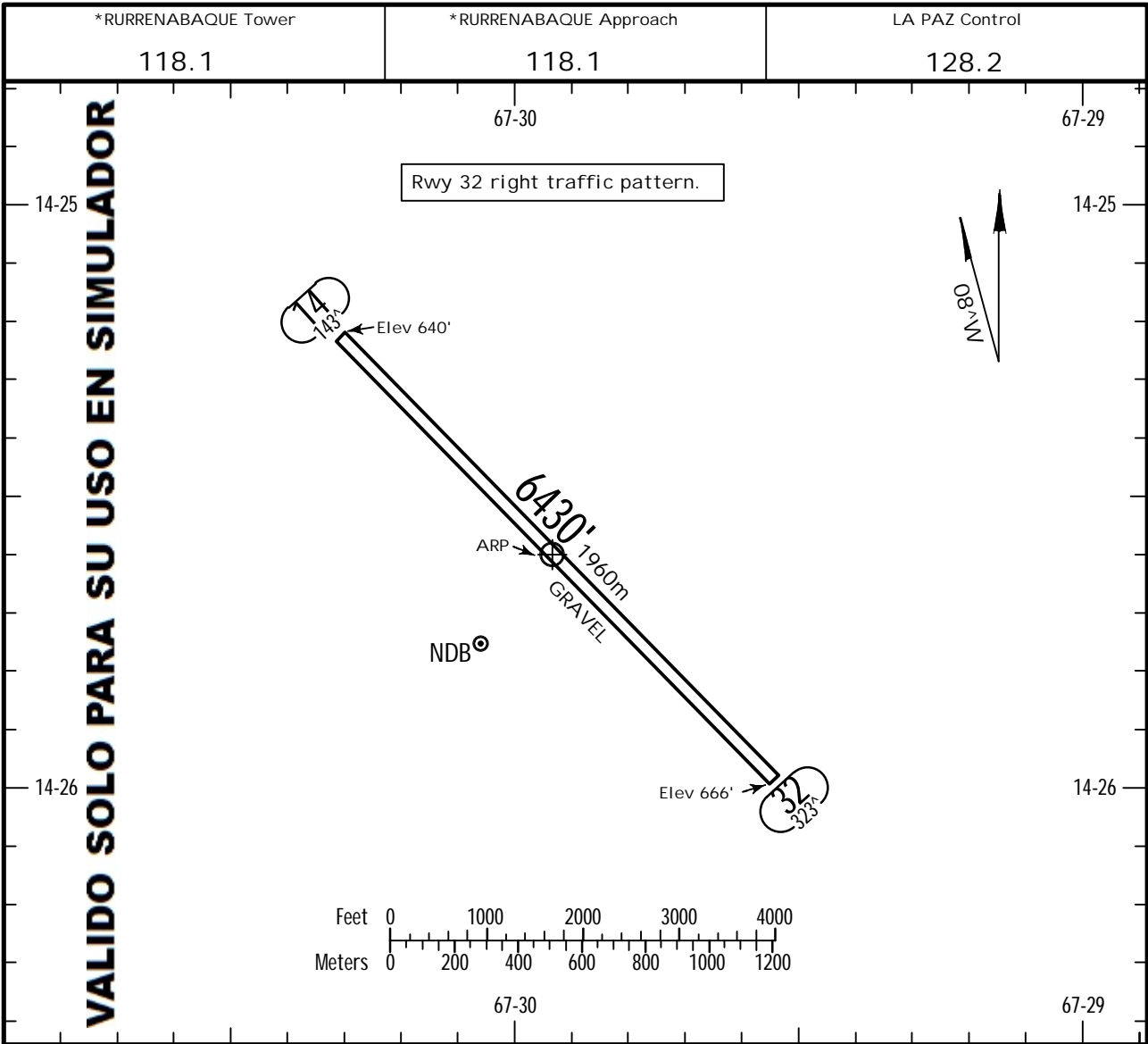
Runway Information

Runway: 14
Length x Width: 6430 ft x 131 ft
Surface Type: gravel
TDZ-Elev: 640 ft

Runway: 32
Length x Width: 6430 ft x 131 ft
Surface Type: gravel
TDZ-Elev: 666 ft

Communication Information

Rurrenabaque Tower 118.1
Rurrenabaque Approach Control 118.1
Rurrenabaque Radio 662.2 Air-Ground



ADDITIONAL RUNWAY INFORMATION

RWY	USABLE LENGTHS		TAKE-OFF	WIDTH
	Threshold	Landing Beyond Glide Slope		
14				131'
32				40m

CHANGES: Approach freq added.

SLRQ/RBQ

FIR BOLIVIA

RURRENABAQUE, BOLIVIA
RNAV (GNSS) Z Rwy 14

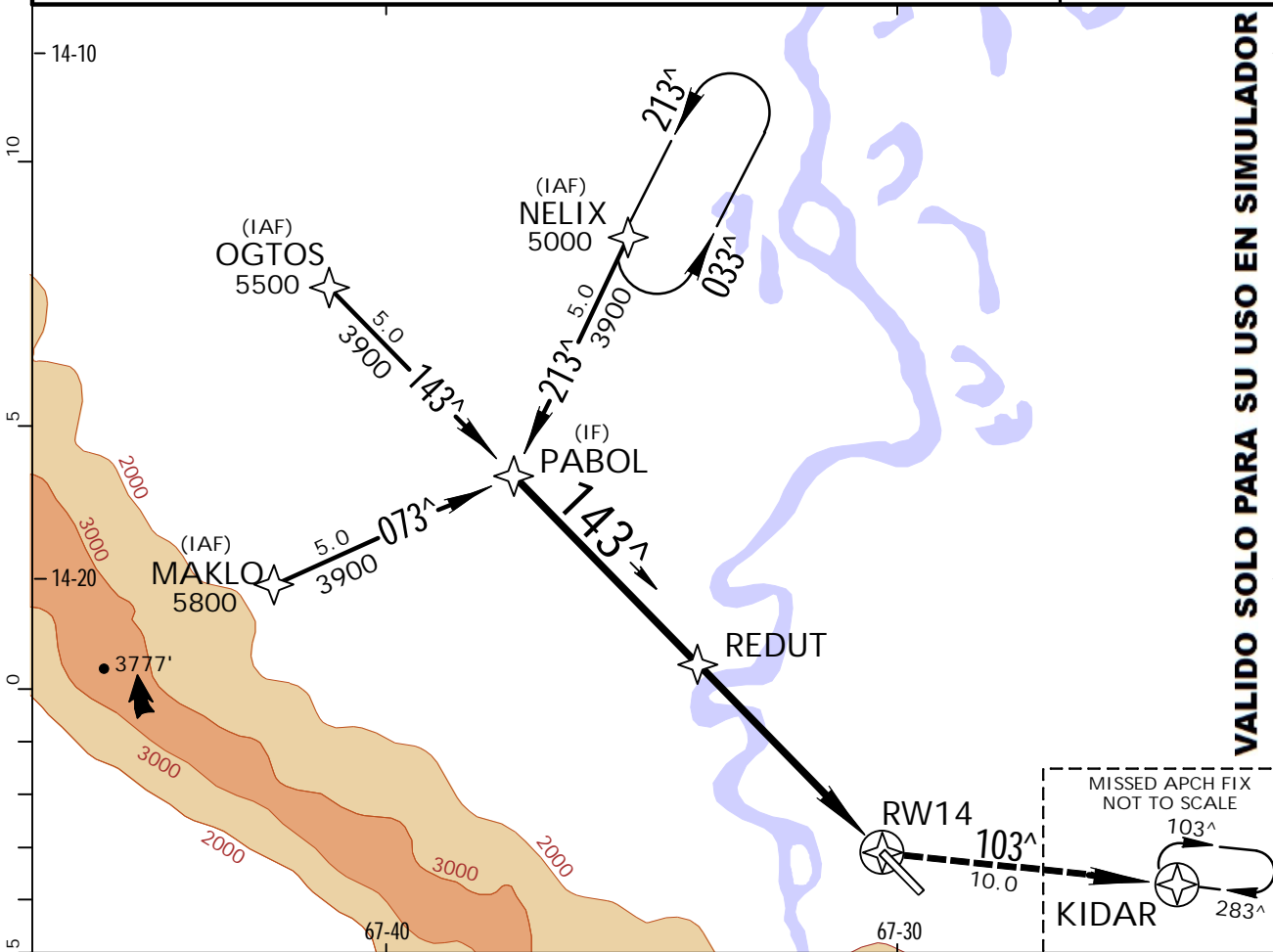
RURRENABAQUE

23 NOV 12

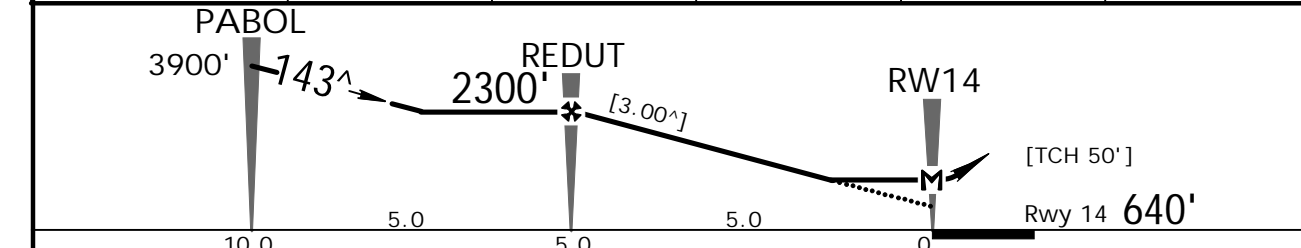
(12-1)

CAT A & B

LA PAZ Control 128.2		*RURRENABAQUE Approach 118.1		*RURRENABAQUE Tower 118.1	
RNAV	Final Apch Crs 143[^]	Minimum Alt REDUT 2300' (1660')	LNAV MDA(H) (CONDITIONAL) 1300' (660')	Apt Elev 666'	Rwy 14 640'
MISSED APCH: Turn LEFT direct to KIDAR and climb to 4000'. Join holding and request ATC instructions. No turns prior MAP.					
Alt set: hPa	Rwy Elev: 23 hPa	Trans level: By ATC	Trans alt: 6000'	MSA ARP	



DIST to THR	5.0	4.0	3.0	2.0	1.9
ALTITUDE	2300'	1970'	1650'	1330'	1300'



Gnd speed-Kts	70	90	100	120	140	160	4000'	D → KIDAR
Descent angle [3.00 [^]]	372	478	531	637	743	849		
MAP at RW14							LT ↓	
REDUT to MAP	5.0	4:17	3:20	3:00	2:30	2:09		

STRAIGHT-IN LANDING RWY 14			CIRCLE-TO-LAND		
LNAV MDA(H) 1300' (660')					
DAY			DAY		
A	1600m		NIGHT	Max Kts	NIGHT
B				100	1300' (634')-1900m
C				135	1900' (1234')-1900m
D	NOT APPLICABLE		NA	C	NOT APPLICABLE
				D	NOT APPLICABLE

CHANGES: Approach freq added.

PANS OPS

VALIDO SOLO PARA SU USO EN SIMULADOR

Chart changes since cycle 24-2012

ADD = added chart, REV = revised chart, DEL = deleted chart.

ACT	PROCEDURE IDENT	INDEX	REV DATE	EFF DATE
	RURRENABAQUE, (RURRENABAQUE - SLRQ)			

TERMINAL CHART CHANGE NOTICES

No Chart Change Notices for Airport SLRQ