

# PARA USO EN AVIACION VIRTUAL UNICAMENTE

**SLSA**

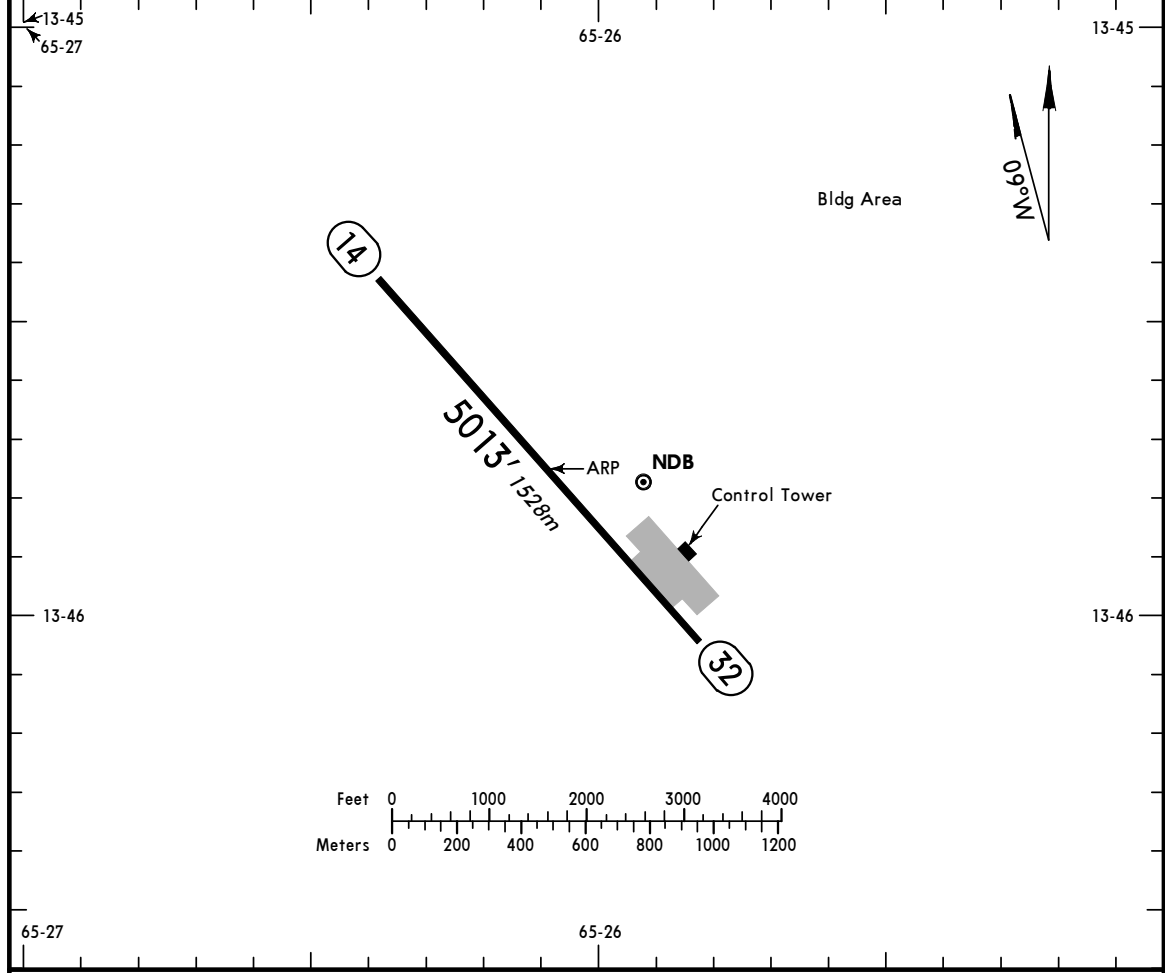
Apt Elev **476'**  
S13 45.8 W065 26.4

**JEPPESEN SANTA ANA DEL YACUMA, BOLIVIA**

14 JUL 06 (16-1)

**SANTA ANA DEL YACUMA**

\*SANTA ANA Tower 118.3



**ADDITIONAL RUNWAY INFORMATION**

RWY	USABLE LENGTHS	LANDING BEYOND	TAKE-OFF	WIDTH
14 32				69' 21m

**TAKE-OFF**

	AIR CARRIER (JAA)		AIR CARRIER (FAR 121)	
	All Rwys		All Rwys	
	RCLM (DAY only)		Adequate Vis Ref (DAY only)	
A	400m	2 Eng	400m	
B				
C				
D				

CHANGES: ARP, take-off minimums.

# PARA USO EN AVIACION VIRTUAL UNICAMENTE

SANTA ANA DEL  
YACUMA, BOLIVIA

SLSA  
SANTA ANA DEL YACUMA

JEPPESEN

14 JUL 06 10-3

SID

Apt Elev  
476'

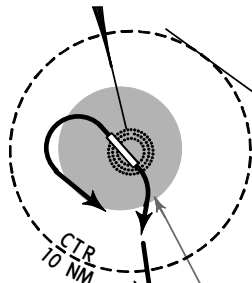
Trans level: By ATC Trans alt: 5000'

1800'

MSA ANA NDB

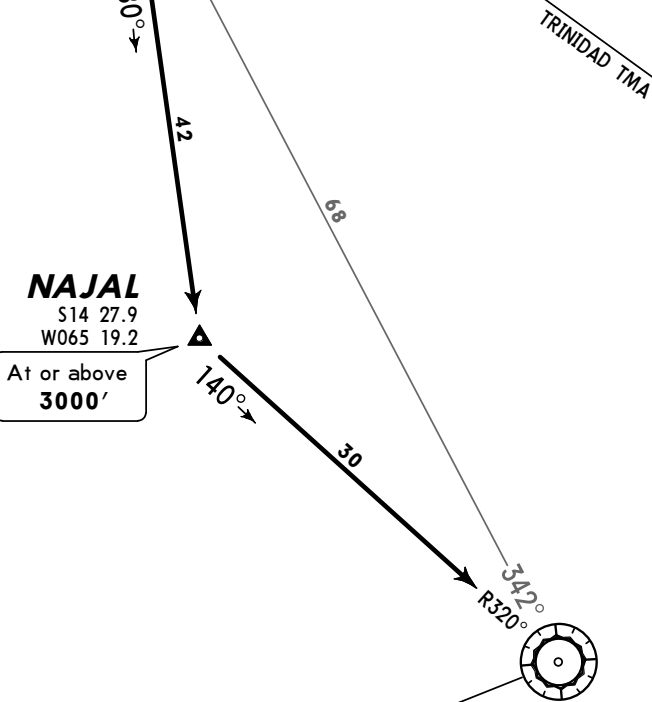
## NAJAL 3 ALFA DEPARTURE (RWYS 14/32)

SANTA ANA  
\*345 ANA  
S13 45.8 W065 25.9



NAJAL  
S14 27.9  
W065 19.2

At or above  
3000'



TRINIDAD  
115.9 TRI  
S14 48.0 W064 56.3

TRINIDAD  
210 TDD  
S14 49.5 W064 55.4



# PARA USO EN AVIACION VIRTUAL UNICAMENTE

SLSA

JEPPESEN SANTA ANA DEL YACUMA, BOLIVIA

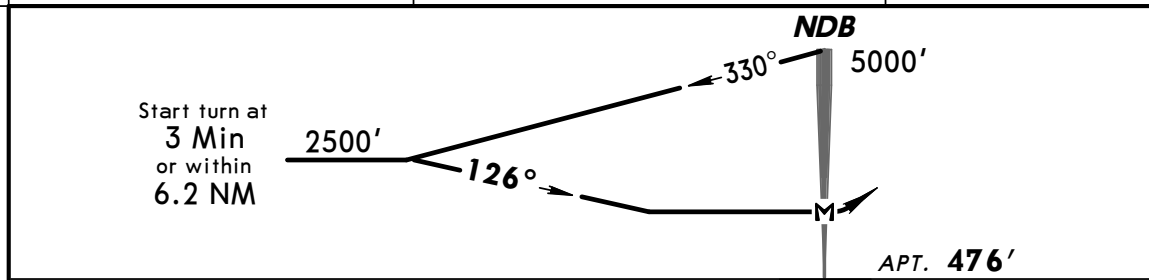
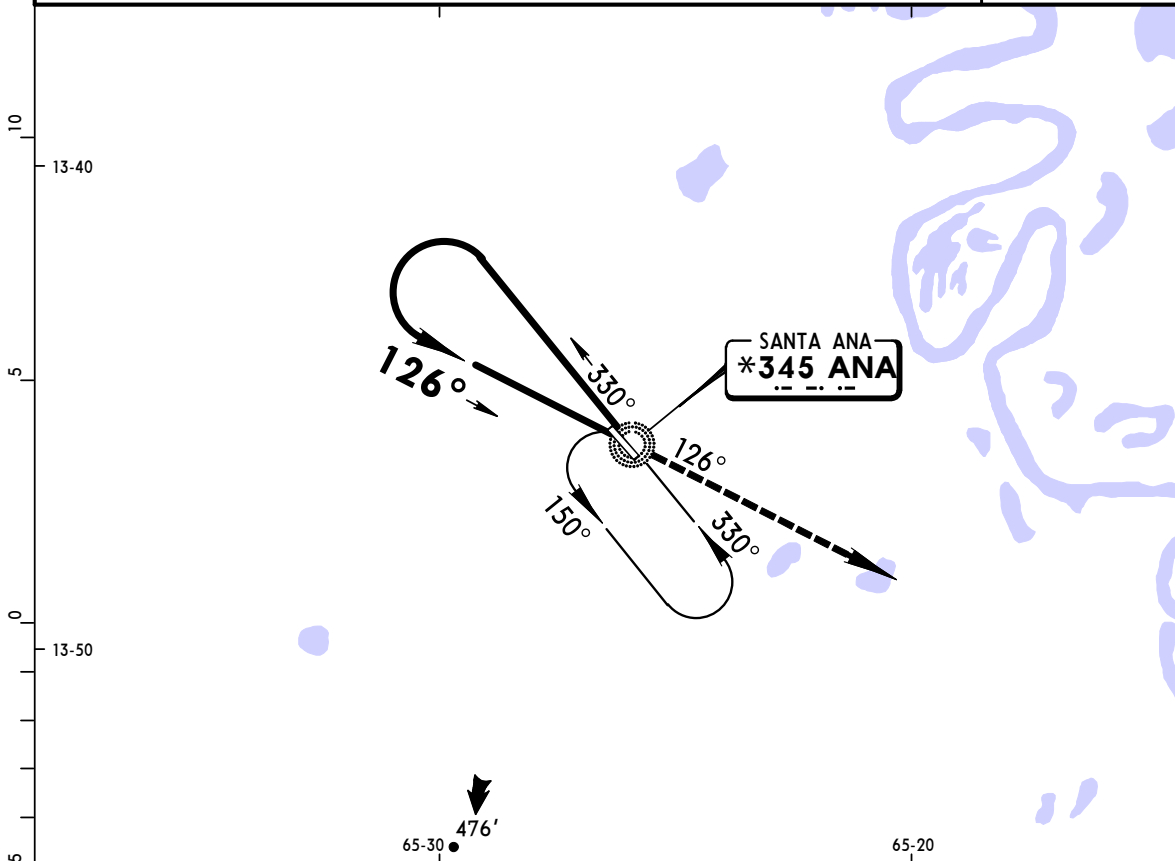
SANTA ANA DEL YACUMA (16-1) 14 JUL 06

NDB-1 Rwy 14

\*SANTA ANA Tower 118.3

BRIEFING STRIP™

NDB ANA <b>*345</b>	Final Apch Crs <b>126°</b>	No FAF	MDA(H) (CONDITIONAL) <b>900' (424')</b>	Apt Elev <b>476'</b>	1800'
MISSED APCH: Climb on 126° bearing from ANA NDB to 3000' and request instructions from CONTROL.					
Alt Set: hPa	Apt Elev: 17 hPa	Trans level: By ATC	Trans alt: 5000'	MSA ANA NDB	



				3000'	ANA
				↑	on *345
MAP at NDB					126°

STRAIGHT-IN LANDING RWY14		CIRCLE-TO-LAND		
MDA(H) 900' (424')		DAY		NIGHT
DAY		DAY		NIGHT
A	1.6 km	Max Kts	MDA(H)	NA
B		100	900' (424') - 1.6 km	
C	2.0 km	135	980' (504') - 1.6 km	
D		180	1080' (604') - 2.4 km	
		205	1180' (704') - 3.6 km	

PANS OPS 3

CHANGES: Airport elevation.

© JEPPESEN SANDERSON, INC., 2006. ALL RIGHTS RESERVED.

# PARA USO EN AVIACION VIRTUAL UNICAMENTE

SLSA



JEPPESEN SANTA ANA DEL YACUMA, BOLIVIA

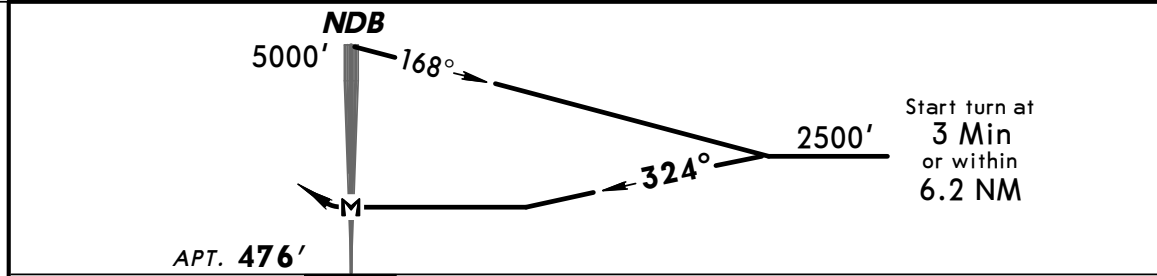
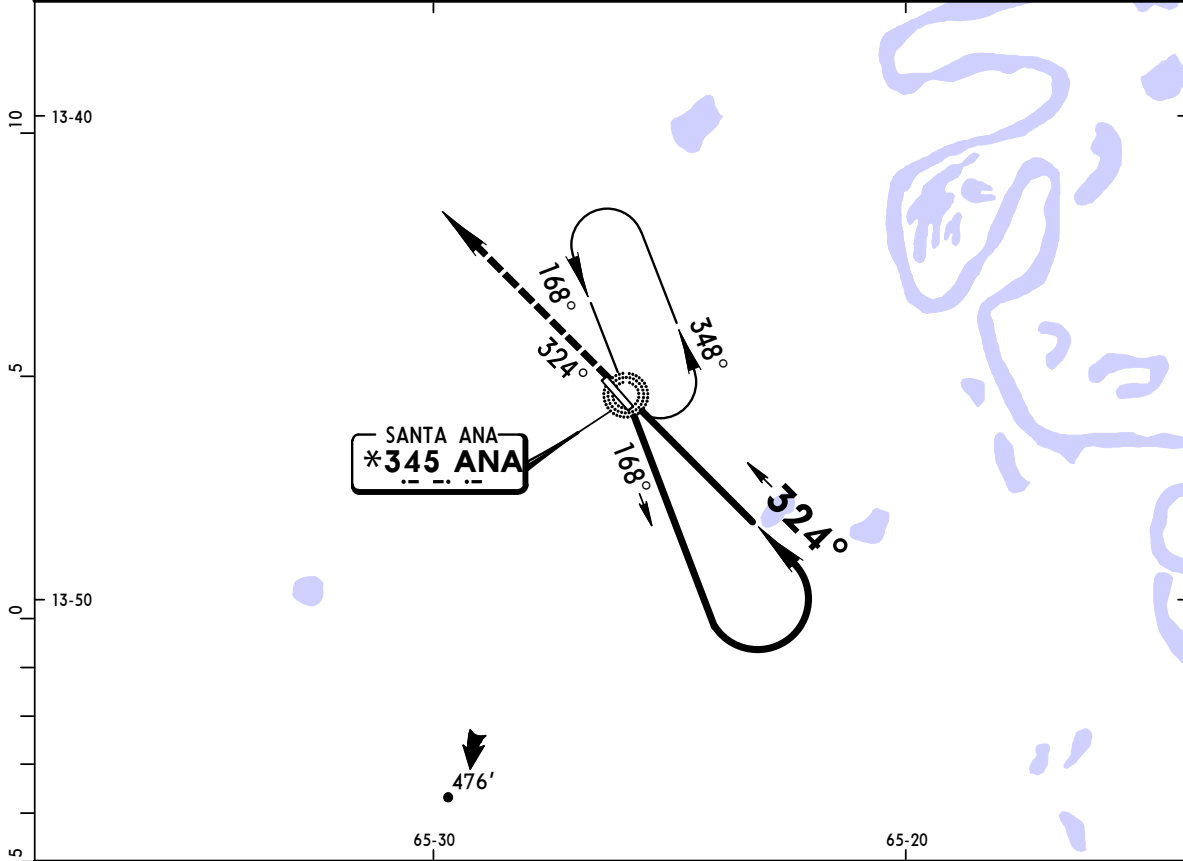
SANTA ANA DEL YACUMA (16-2) 14 JUL 06

NDB-1 Rwy 32

\*SANTA ANA Tower 118.3

BRIEFING STRIP™

NDB ANA <b>*345</b>	Final Apch Crs <b>324°</b>	No FAF	MDA(H) (CONDITIONAL) <b>900' (424')</b>	Apt Elev <b>476'</b>	1800'
MISSED APCH: Climb on 324° bearing from ANA NDB to 3000' and request instructions from CONTROL.					
Alt Set: hPa	Apt Elev: 17 hPa	Trans level: By ATC	Trans alt: 5000'	MSA ANA NDB	



					<b>3000'</b>	ANA on <b>*345</b> <b>324°</b>
MAP at NDB					↑	

STRAIGHT-IN LANDING RWY32		CIRCLE-TO-LAND		
MDA(H) <b>900' (424')</b>		DAY		NIGHT
DAY		NIGHT		NA
A	<b>1.6 km</b>	Max Kts	MDA(H)	
B		100	<b>900' (424') - 1.6 km</b>	
C	<b>2.0 km</b>	135	<b>980' (504') - 1.6 km</b>	
D		180	<b>1080' (604') - 2.4 km</b>	
		205	<b>1180' (704') - 3.6 km</b>	

PANS OPS 3

CHANGES: Airport elevation.

© JEPPESEN SANDERSON, INC., 2006. ALL RIGHTS RESERVED.