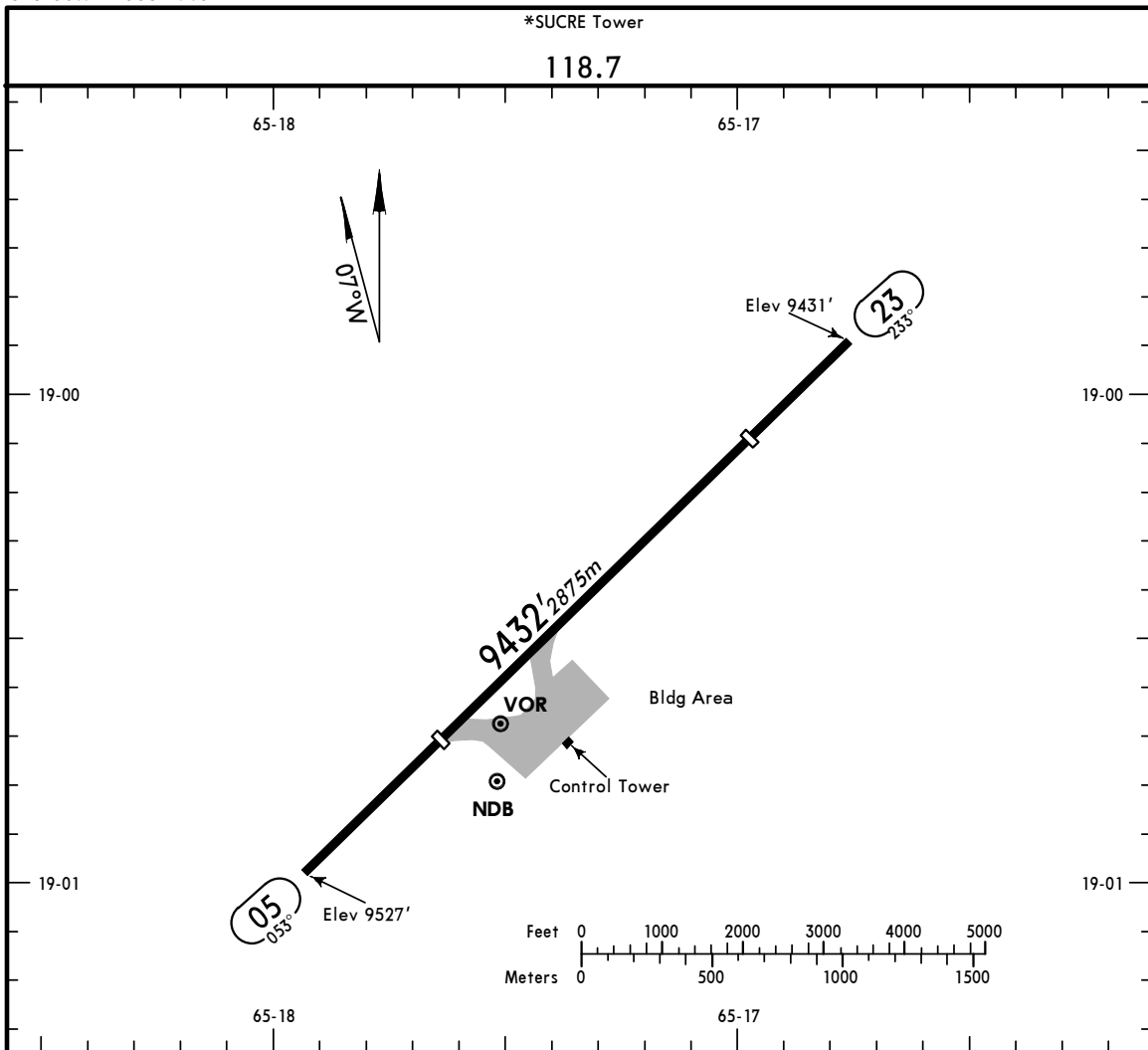


PARA USO EN AVIACION VIRTUAL UNICAMENTE

SLSU/SRE
 Apt Elev **9527'**
 S19 00.7 W065 17.6

JEPPESEN
 16 NOV 07 **(13-1)**

SUCRE, BOLIVIA
 JUANA A. DE PADILLA



ADDITIONAL RUNWAY INFORMATION

RWY		USABLE LENGTHS		TAKE-OFF	WIDTH
		Threshold	Glide Slope		
05	PAPI (angle 3.2°)	7077'	2157m		98'
23	APAPI-L (angle 2.47°)	7707'	2349m		30m

	TAKE-OFF				FOR FILING AS ALTERNATE	
	AIR CARRIER Rwy 05		GENERAL AVIATION Rwy 05		DAY	NIGHT
	DAY	NIGHT	DAY	NIGHT		
2 Eng	1600m	NA	450m-	NA	1000m -5000m	NA
3 & 4 Eng	800m		2400m			
				A		
				B		
				C		
				D		

CHANGES: Usable lengths, Rwy 05 lighting.

© JEPPESEN SANDERSON, INC., 1999, 2007. ALL RIGHTS RESERVED.

PARA USO EN AVIACION VIRTUAL UNICAMENTE

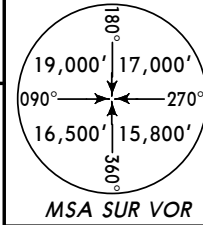
SLSU/SRE
JUANA A. DE PADILLA

JEPPESEN
6 FEB 09 **10-2**

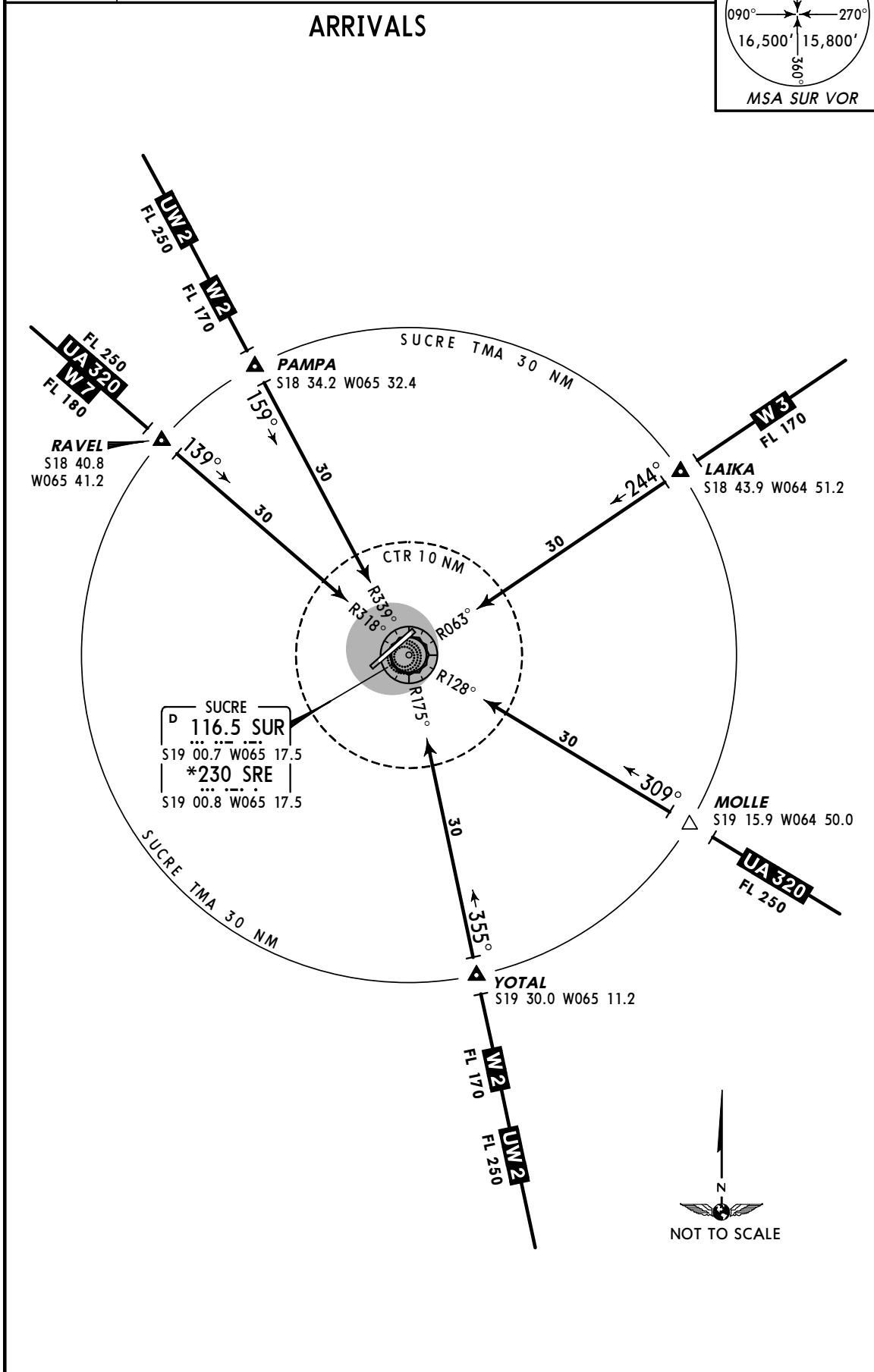
SUCRE, BOLIVIA
ARRIVAL

Apt Elev
9527'

Alt Set: hPa Trans level: BY ATC Trans alt: 18000'



ARRIVALS



CHANGES: Procedure revised, new format.

© JEPPESEN, 2009. ALL RIGHTS RESERVED.

PARA USO EN AVIACION VIRTUAL UNICAMENTE

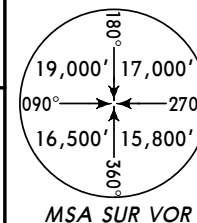
SLSU/SRE
JUANA A. DE PADILLA

JEPPESSEN
6 FEB 09 **10-3**

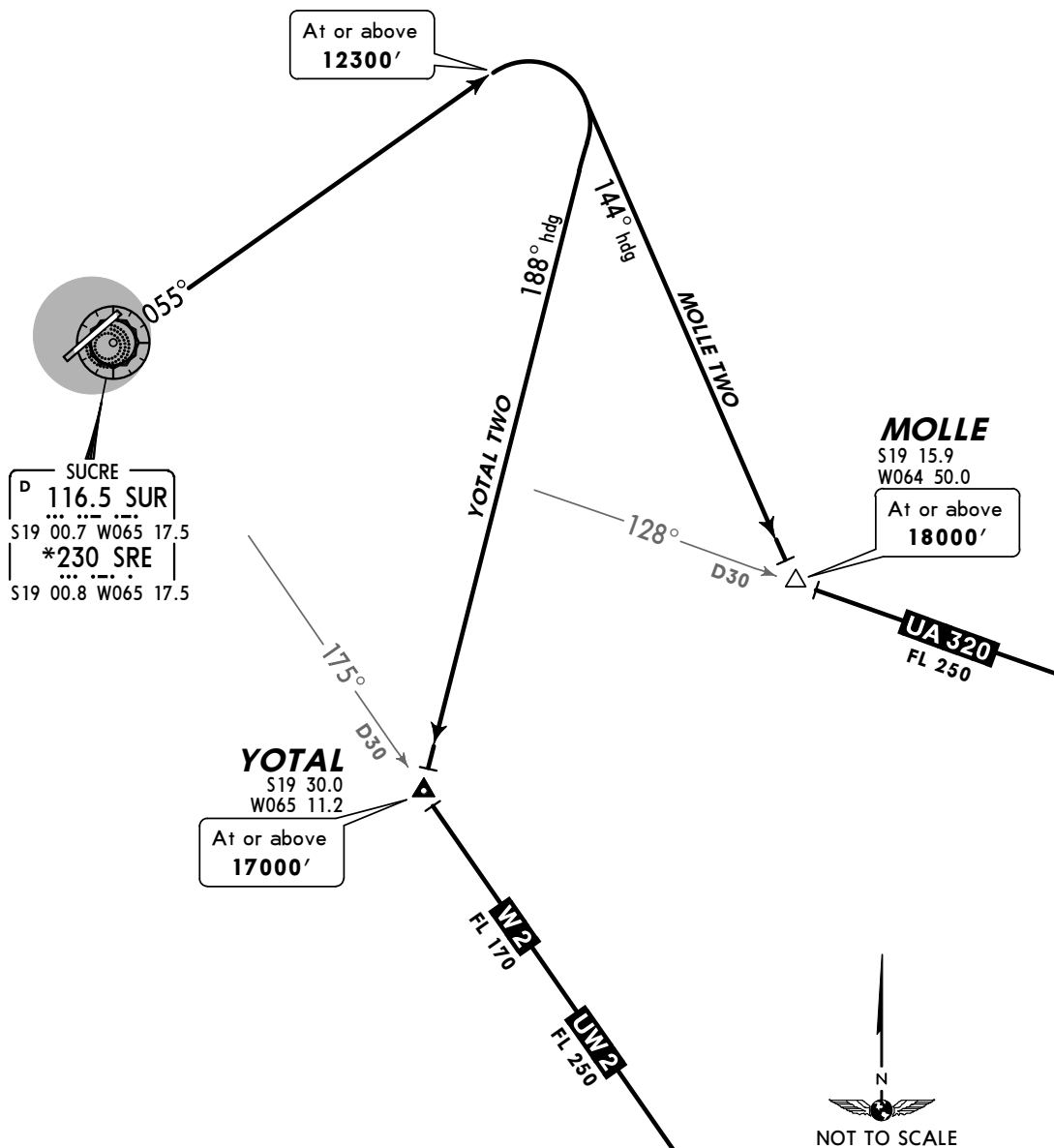
SUCRE, BOLIVIA
SID

Apt Elev
9527'

Trans level: BY ATC Trans alt: 18000'



MOLLE TWO, YOTAL TWO DEPARTURES (RWY 05)



These SIDs require minimum climb gradients of:
MOLLE TWO: 5.0% to **12300'**, then 4.0% to MOLLE.
YOTAL TWO: 5.0% to **12300'**.

Gnd speed-KT	75	100	150	200	250	300
4.0% V/V(fpm)	304	405	608	810	1013	1215
5.0% V/V(fpm)	380	506	760	1013	1266	1519

SID	INITIAL CLIMB
MOLLE TWO	Climb on SUR R-055. At 12300' turn RIGHT heading 144° to MOLLE.
YOTAL TWO	Climb on SUR R-055. At 12300' turn RIGHT heading 188° direct to YOTAL.

PARA USO EN AVIACION VIRTUAL UNICAMENTE

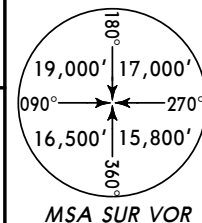
SLSU/SRE
JUANA A. DE PADILLA

JEPPESEN
6 FEB 09 (10-3A)

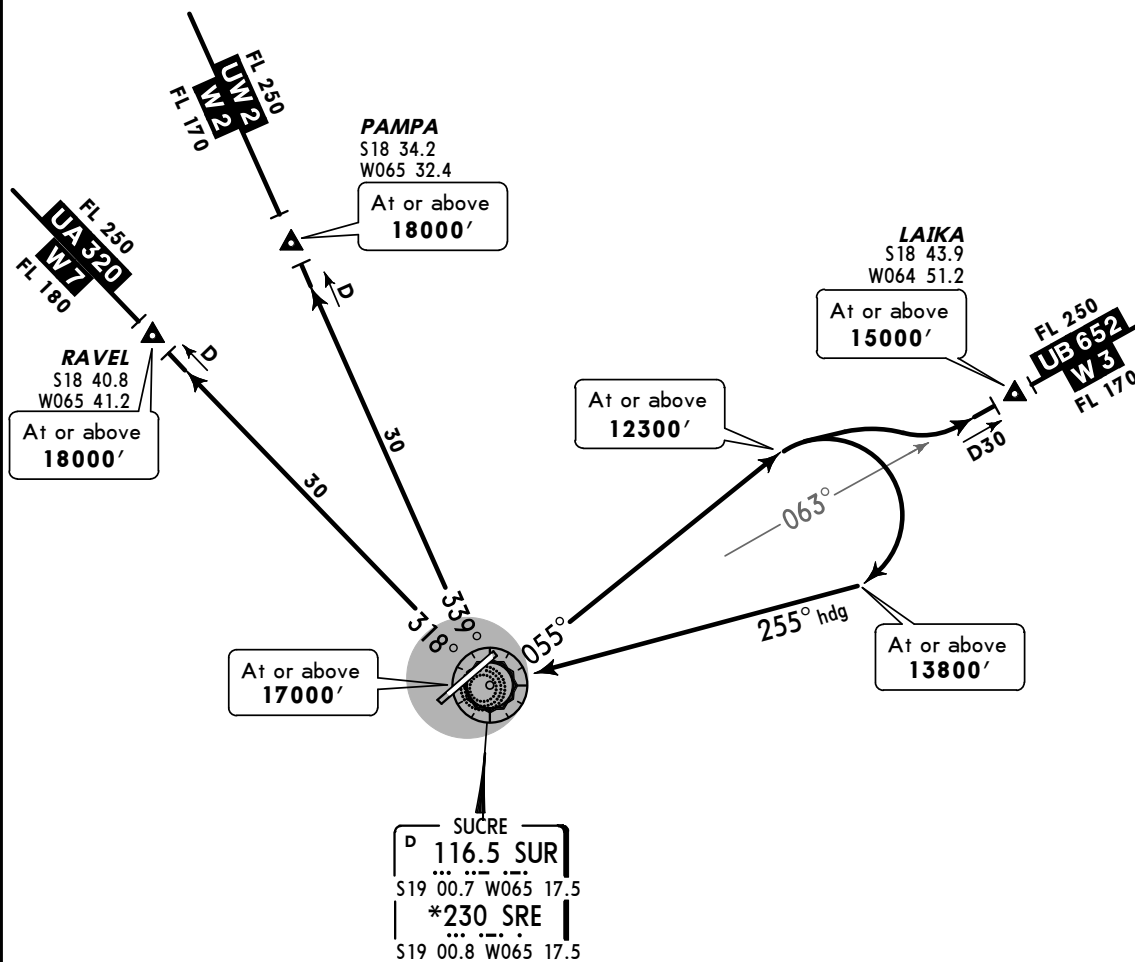
SUCRE, BOLIVIA
SID

Apt Elev
9527'

Trans level: BY ATC Trans alt: 18000'



SUCRE TWO DEPARTURE (RWY 05)



This SID requires minimum climb gradients of:
5.0% to **12300'**

UW-2, W-2: 2.0% SUR to PAMPA.

UA-320, W-7: 2.0% SUR to RAVEL.

UB-652, W-3: 4.0% from **12300'** to LAIKA.

Gnd speed-KT	75	100	150	200	250	300
2.0% V/V(fpm)	152	203	304	406	507	607
4.0% V/V(fpm)	304	405	608	810	1013	1215
5.0% V/V(fpm)	380	506	760	1013	1266	1519



INITIAL CLIMB

Climb on SUR R-055 to **12300'**.

ROUTING

UW-2, W-2	Turn RIGHT 255° heading to SUR, then via SUR R-339 to PAMPA.
UA-320, W-7	Turn RIGHT 255° heading to SUR, then via SUR R-318 to RAVEL.
UB-652, W-3	Then direct LAIKA via SUR R-063.

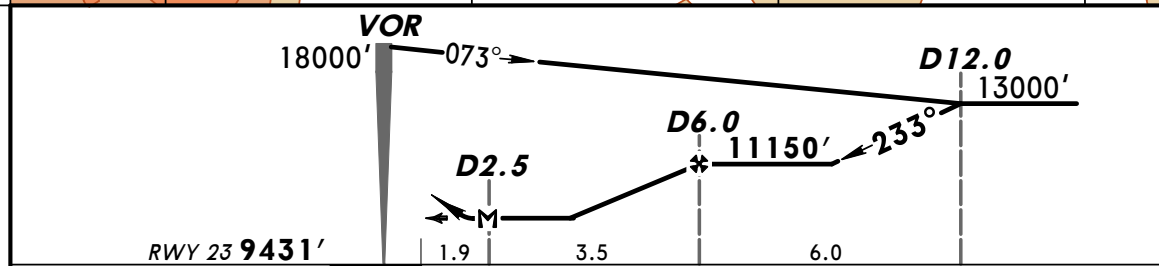
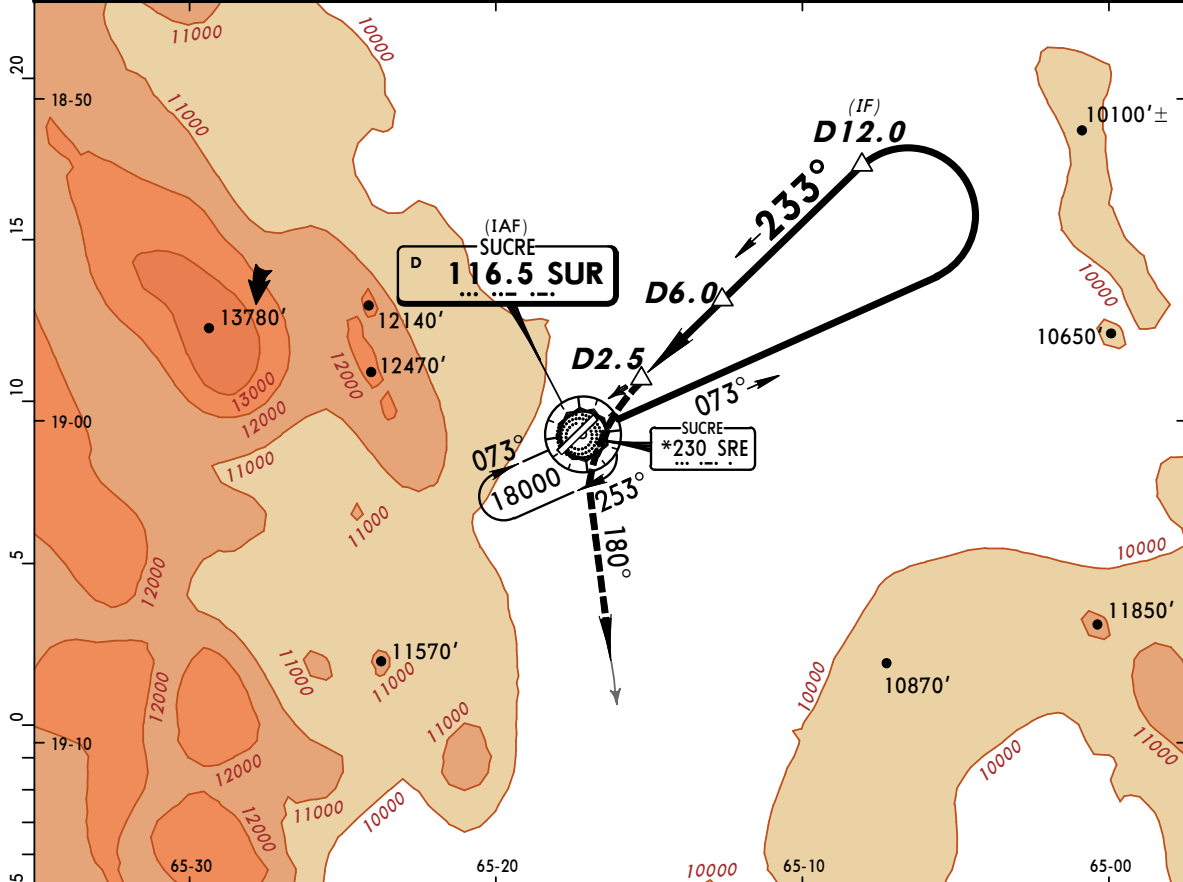
PARA USO EN AVIACION VIRTUAL UNICAMENTE

SLSU/SRE
JUANA A. DE PADILLA

JEPPESEN
16 NOV 07 (13-1)

SUCRE, BOLIVIA
VOR DME 3 Rwy 23

*SUCRE Approach				*SUCRE Tower	
119.1				118.7	
VOR SUR 116.5	Final Aptch Crs 233°	Minimum Alt D6.0 11150' (1719')	MDA(H) (CONDITIONAL) 10800' (1369')	Apt Elev 9527' RWY 23 9431'	
MISSED APCH: Turn LEFT outbound via SUR VOR R-180, climbing to 15000' requesting instructions from TOWER .					
Alt Set: hPa Rwy Elev: 301 hPa Trans level: By ATC Trans alt: 18000' 1. MAX IAS for procedure 200 Kts.					
					MSA SUR VOR



Gnd speed-Kts	70	90	100	120	140	160	APAPI-L	15000'	SUR via 116.5 LT R-180
MAP at D2.5 or									
FAF to MAP	3.5	3:00	2:20	2:06	1:45	1:30			

STRAIGHT-IN LANDING RWY 23				CIRCLE-TO-LAND			
MDA(H) 10800' (1369')							
	DAY	NIGHT		Max Kts	DAY	NIGHT	
A	2000m	NA		100	10800' (1273') -2000m	NA	
B	2400m			135	10800' (1273') -2800m		
C	4800m			180	11190' (1663') -4800m		
D		200					

PANS OPS

CHANGES: None.

© JEPPESEN SANDERSON, INC., 1999, 2005. ALL RIGHTS RESERVED.

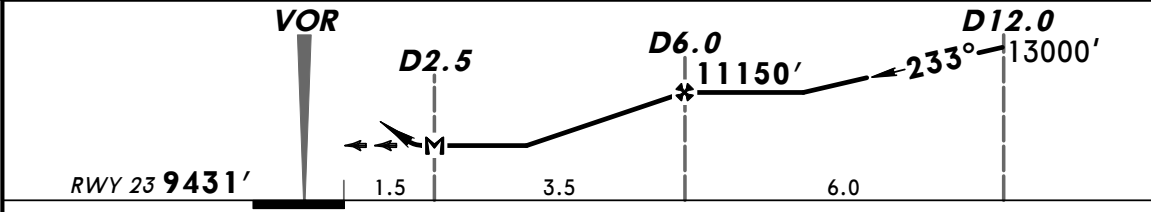
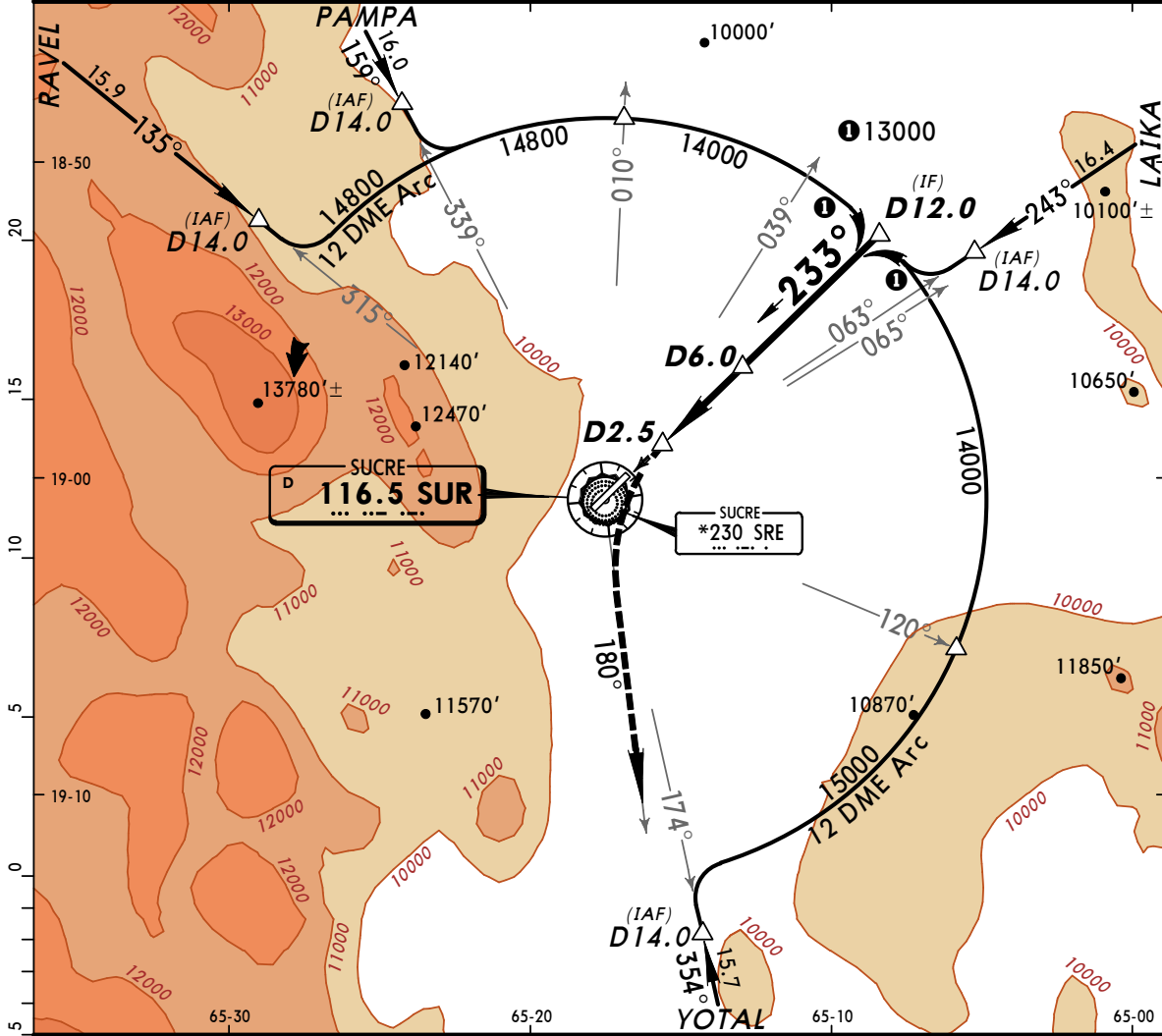
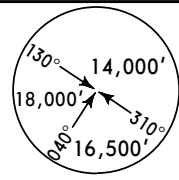
PARA USO EN AVIACION VIRTUAL UNICAMENTE

SLSU/SRE
JUANA A. DE PADILLA

JEPPESEN
25 JAN 08 (13-2) CAT A, B & C

SUCRE, BOLIVIA
VOR DME 5 Rwy 23

*SUCRE Approach 119.1			*SUCRE Tower 118.7		
VOR SUR 116.5	Final Apch Crs 233°	Minimum Alt D6.0 11150' (1719')	MDA(H) (CONDITIONAL) 10800' (1369')	Apt Elev 9527'	Rwy 23 9431'
MISSED APCH: Turn LEFT outbound via SUR VOR R-180, climbing to 15000' requesting instructions from TOWER.					
Alt Set: hPa		Rwy Elev: 301 hPa		Trans level: By ATC	
				Trans alt: 18000'	



Gnd speed-Kts	70	90	100	120	140	160	APAPI-L 15000' SUR via 116.5 LT R-180
MAP at D2.5 or							
FAF to MAP	3.5	3:00	2:20	2:06	1:45	1:30	

STRAIGHT-IN LANDING RWY 23		CIRCLE-TO-LAND	
MDA(H) 10800' (1369')			
DAY		DAY	
NIGHT		NIGHT	
A	2000m	Max Kts	100
B	2400m	MDA(H)	10800' (1273')-2000m
C	4800m	135	10800' (1273')-2400m
D	NOT APPLICABLE	180	11190' (1663')-4800m
		D	NOT APPLICABLE

PANS OPS