

## List of pages in this Trip Kit

Trip Kit Index

Airport Information For SLTJ

Terminal Charts For SLTJ

Revision Letter For Cycle 25-2012

Change Notices

Notebook

## General Information

Location: Tarija Bol  
IATA Code: TJA  
Lat/Long: S21° 33.1' W064° 42.5'  
Elevation: 6096 ft

Airport Use: Public  
Magnetic Variation: 8.4°W

Fuel Types: 100-130 Octane, Jet A-1  
Customs: No  
Airport Type: IFR  
Landing Fee: No  
Control Tower: Yes  
Jet Start Unit: No  
LLWS Alert: No  
Beacon: Yes

Sunrise: 1013 Z  
Sunset: 2252 Z,

## Runway Information

Runway: 13  
Length x Width: 9951 ft x 148 ft  
Surface Type: paved  
TDZ-Elev: 6096 ft  
Lighting: Edge, ALS, REIL

Runway: 31  
Length x Width: 9951 ft x 148 ft  
Surface Type: paved  
TDZ-Elev: 6056 ft  
Lighting: Edge, REIL

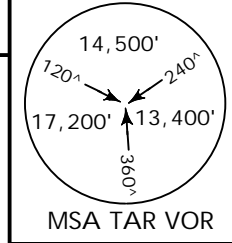
## Communication Information

Tarija Tower 118.1  
Tarija Ground Control 121.9  
Tarija Approach Control 119.4  
Tarija Radio 662.2 Air-Ground

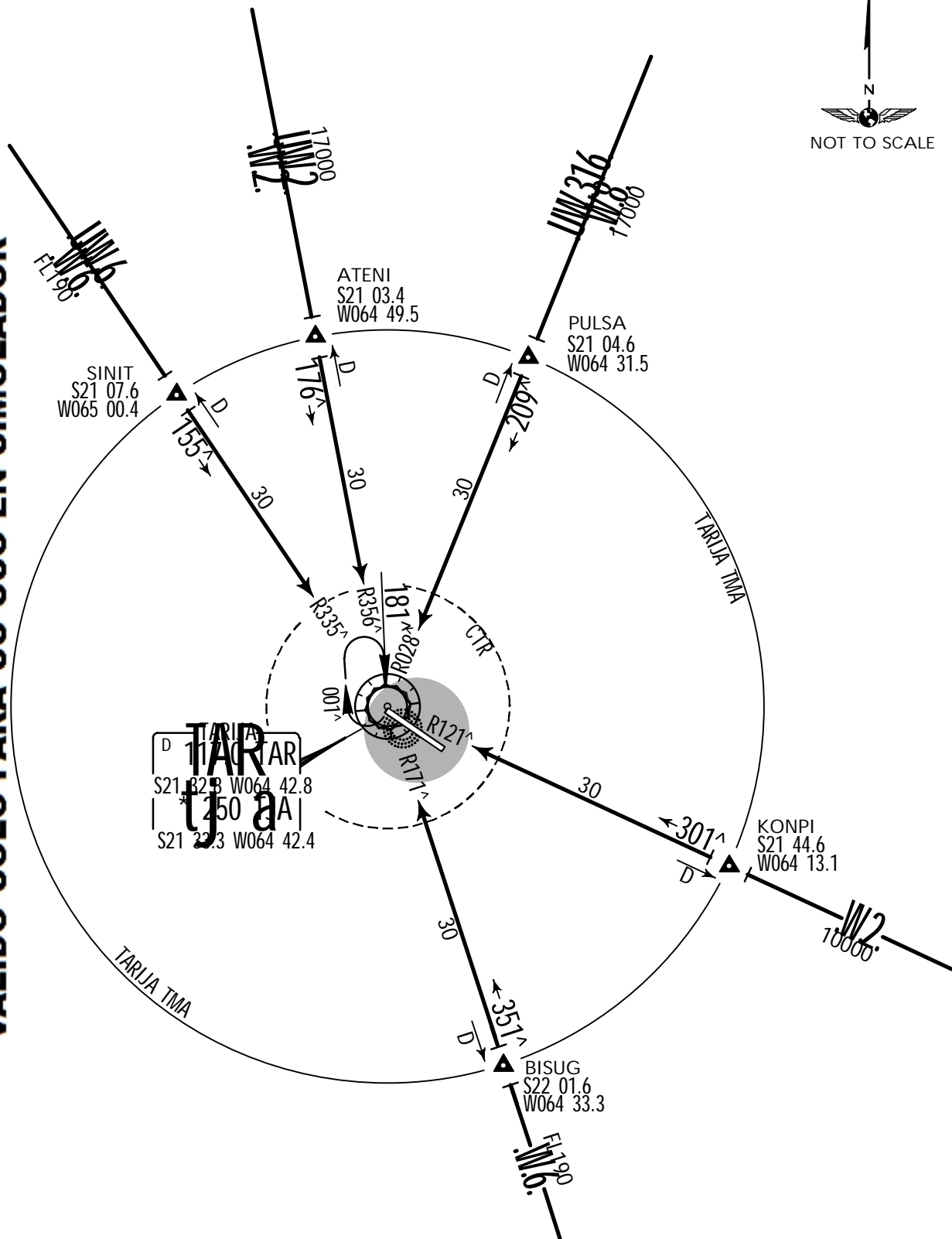
Apt Elev  
6096'

Alt Set: hPa Trans level: By ATC Trans alt: 18000'

# ARRIVALS

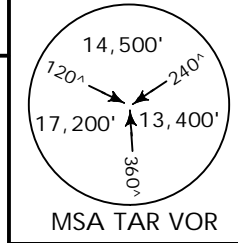


VALIDO SOLO PARA SU USO EN SIMULADOR



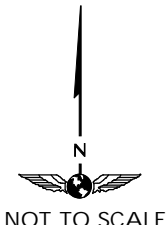
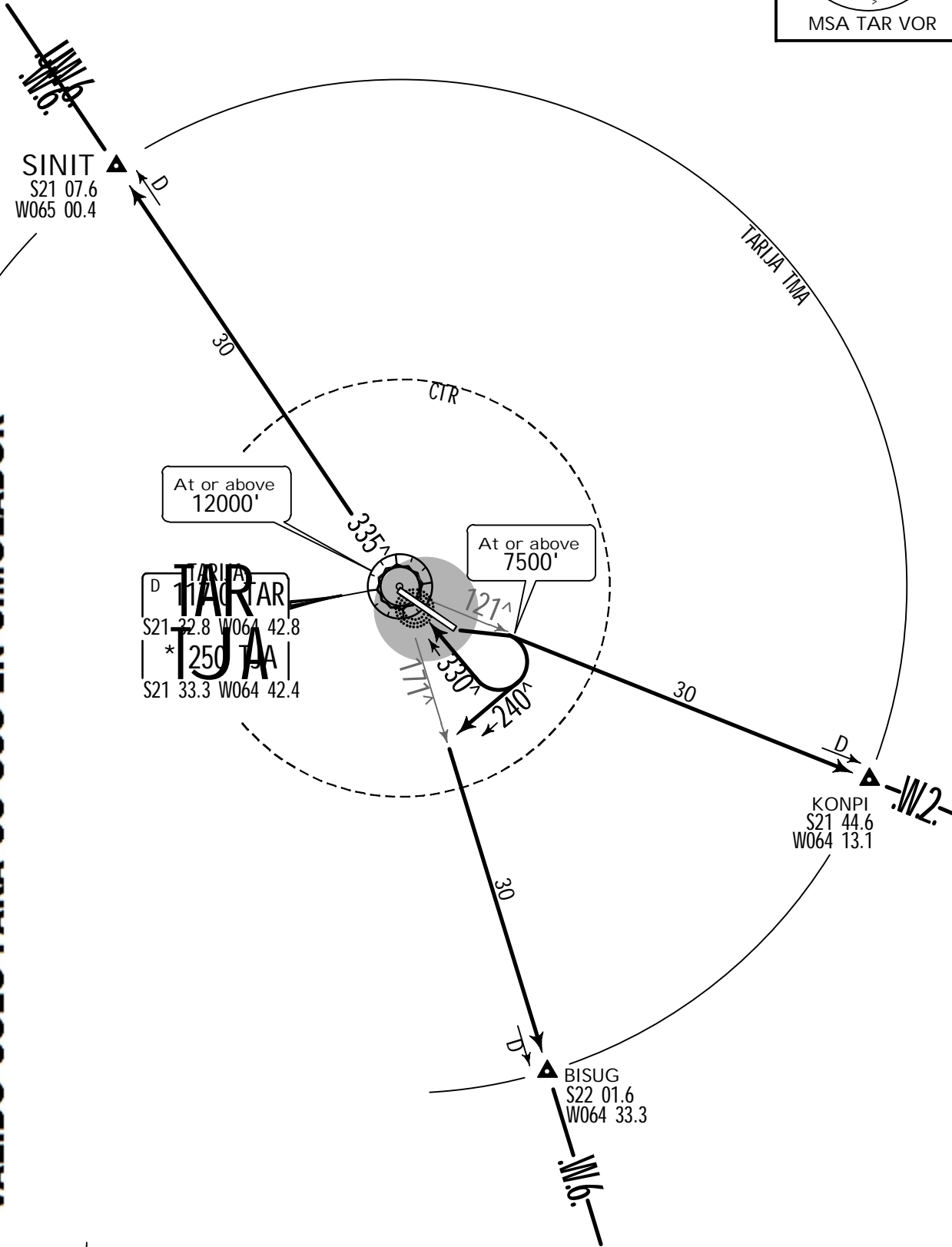
Apt Elev  
6096'

Trans level: By ATC Trans alt: 18000'



# SINIT ONE DEPARTURE (RWY 13)

VALIDO SOLO PARA SU USO EN SIMULADOR

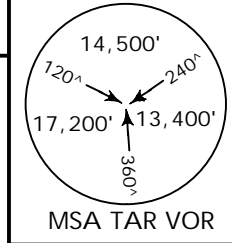


This SID requires the following take-off minimums:  
 Air Carrier Rwy 13: Ceiling not required, (2 Eng) Visibility 1.6 km.  
 (3 & 4 Eng) Visibility 0.8 km.  
 General Aviation Rwy 13: Ceiling 550m, Visibility 2.0 km.

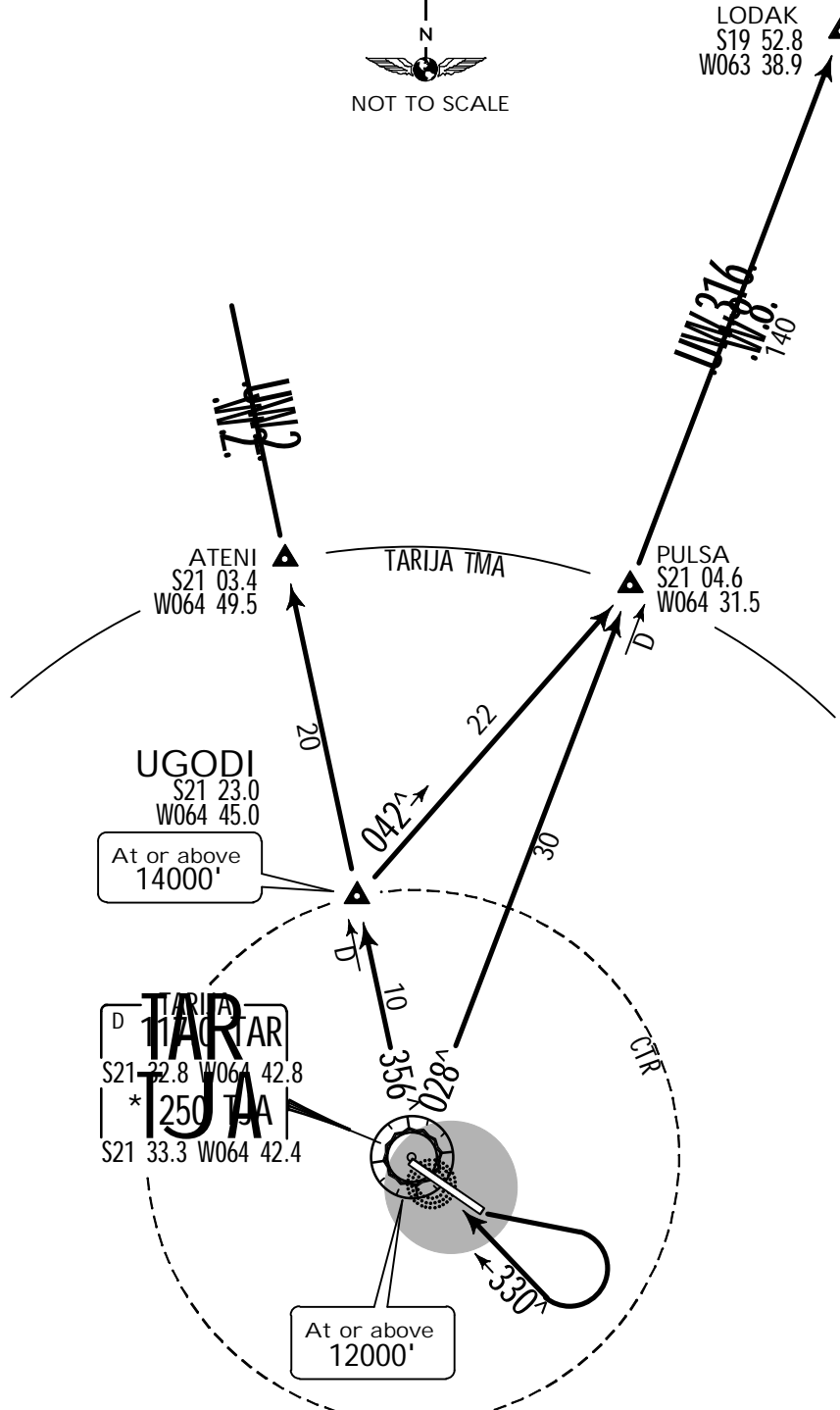
Apt Elev  
6096'

Trans level: By ATC Trans alt: 18000'

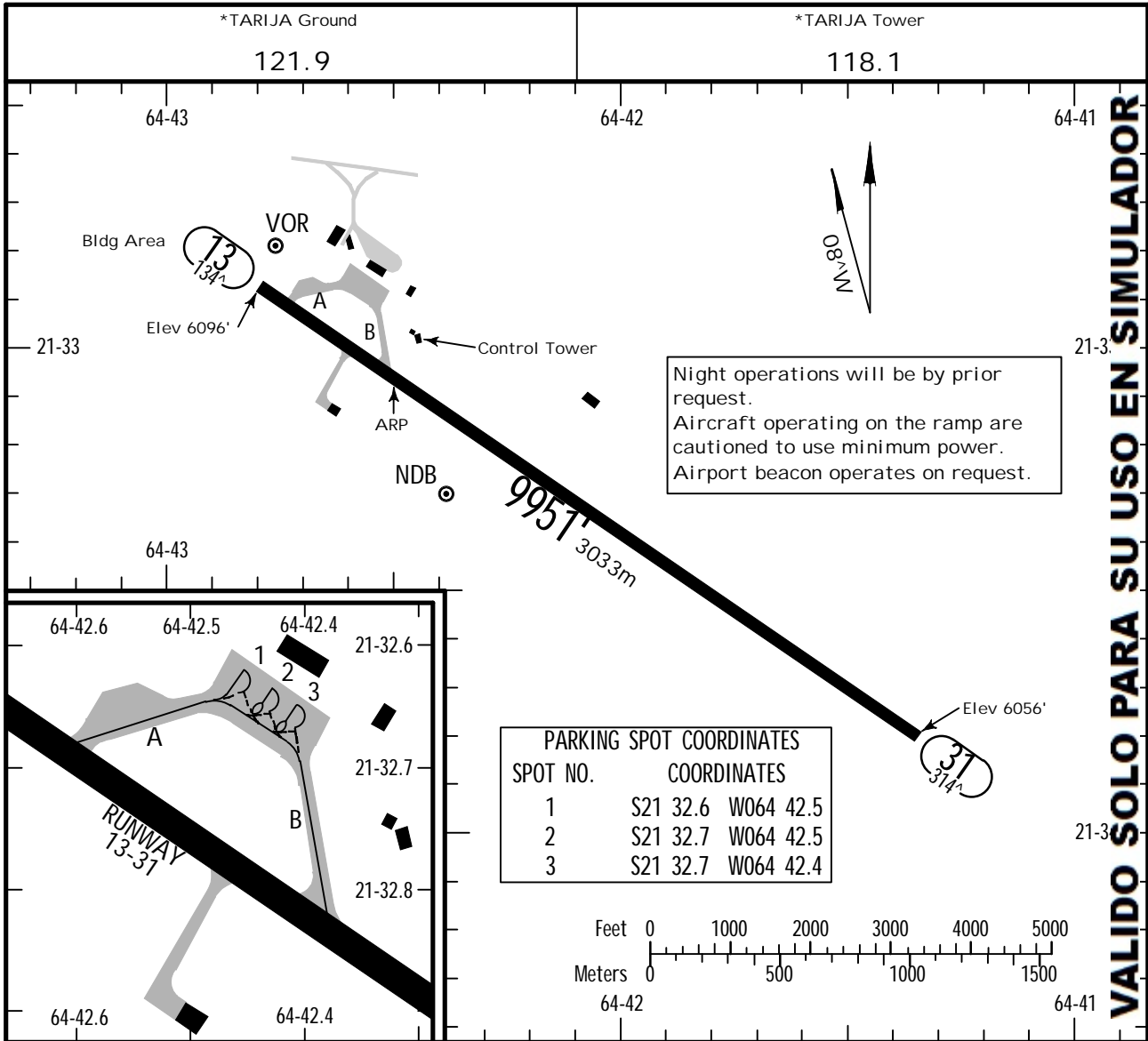
# UGODI ONE DEPARTURE (RWY 13)



VALIDO SOLO PARA SU USO EN SIMULADOR



This SID requires the following take-off minimums:  
 Air Carrier Rwy 13: Ceiling not required,  
 (2 Eng) Visibility 1.6 km.  
 (3 & 4 Eng) Visibility 0.8 km.  
 General Aviation Rwy 13: Ceiling 550m,  
 Visibility 2.0 km.



**VALIDO SOLO PARA SU USO EN SIMULADOR**

**ADDITIONAL RUNWAY INFORMATION**

RWY	USABLE LENGTHS — LANDING BEYOND	TAKE-OFF	WIDTH
13	HIRL SALS REIL PAPI-L (angle 3.00°)		148'
31	HIRL REIL PAPI-L (angle 3.00°)		45m

Eng	TAKE-OFF		FOR FILING AS ALTERNATE	
	AIR CARRIER Rwy 13	GENERAL AVIATION Rwy 13	DAY	NIGHT
2	1.6 km	550m-2.0 km	A	NA
3 & 4	0.8 km		B	
		C		
		D		

CHANGES: Ground freq added, mag var.

SLTJ/TJA

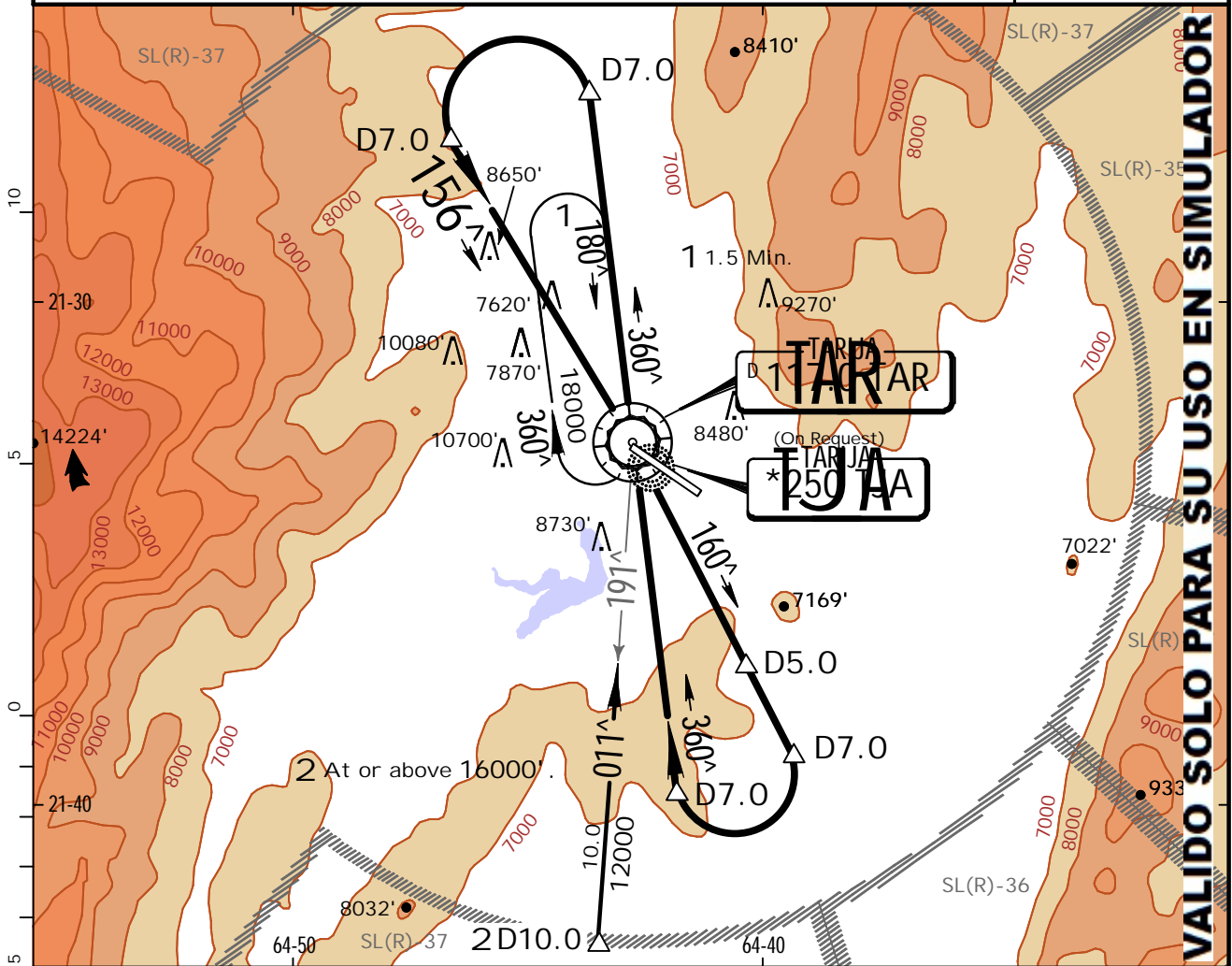
FIR BOLIVIA

TARIJA, BOLIVIA  
 VOR DME NDB-1 Rwy 13

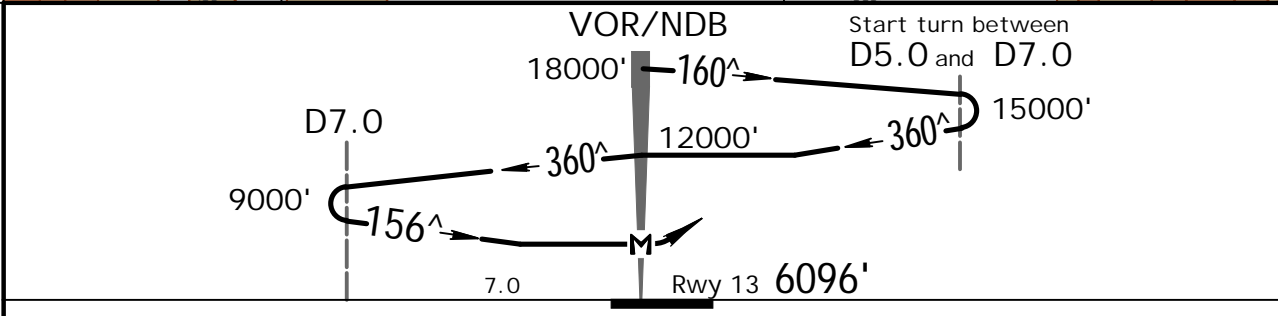
CAPT ORIEL LEA PLAZA INTL

23 NOV 12 (13-1)

*TARIJA Approach 119.4		*TARIJA Tower 118.1		*TARIJA Ground 121.9	
VOR TAR 117.0	Final Apch Crs 156 <sup>^</sup>	No FAF	MDA(H) 7800' (1704')	Apt Elev 6096' Rwy 13 6096'	
MISSED APCH: Climb outbound on TAR VOR R-160 (160 <sup>^</sup> bearing from TJA NDB) to 12000' and request instructions from CONTROL.					
Alt Set: hPa		Rwy Elev: 204 hPa	Trans level: By ATC		Trans alt: 18000'
1. Max IAS for procedure is 160 kts.					



VALIDO SOLO PARA SU USO EN SIMULADOR



MAP at VOR/NDB	SALS REIL PAPI-L	12000' on R-160	TAR 117.0 or *250	TJA 160 <sup>^</sup>
----------------	------------------	-----------------	-------------------	----------------------

1 STRAIGHT-IN LANDING RWY 13 MDA(H) 7800' (1704')		CIRCLE-TO-LAND	
ALS out		Max Kts.	MDA(H)
A	2.0 km	100	7800' (1704')-4.8 km
B	2.0 km	135	7900' (1804')-4.8 km
C	4.8 km	160	8000' (1904')-4.8 km
D	4.8 km	160	8100' (2004')-4.8 km

1 Night operations on request.

CHANGES: Ground freq added.

PANS OPS 3

## Chart changes since cycle 24-2012

ADD = added chart, REV = revised chart, DEL = deleted chart.

ACT    PROCEDURE IDENT

INDEX

REV DATE

EFF DATE

**TARIJA, (CAPT ORIEL LEA PLAZA INTL - SLTJ)**



## **TERMINAL CHART CHANGE NOTICES**

**No Chart Change Notices for Airport SLTJ**