

## List of pages in this Trip Kit

Trip Kit Index

Airport Information For SLVR

Terminal Charts For SLVR

Revision Letter For Cycle 25-2012

Change Notices

Notebook

## General Information

Location: Santa Cruz Bol  
IATA Code: VVI  
Lat/Long: S17° 38.8' W063° 08.3'  
Elevation: 1224 ft

Airport Use: Public  
Magnetic Variation: 11.0°W

Fuel Types: Jet A-1  
Customs: Yes  
Airport Type: IFR  
Landing Fee: No  
Control Tower: Yes  
Jet Start Unit: No  
LLWS Alert: No  
Beacon: Yes

Sunrise: 1010 Z  
Sunset: 2242 Z,

## Runway Information

Runway: 16  
Length x Width: 11483 ft x 148 ft  
Surface Type: concrete  
TDZ-Elev: 1216 ft  
Lighting: Edge, ALS  
Stopway: 197 ft

Runway: 34  
Length x Width: 11483 ft x 148 ft  
Surface Type: concrete  
TDZ-Elev: 1224 ft  
Lighting: Edge, ALS  
Stopway: 197 ft

## Communication Information

Viru Viru Tower 118.6  
Viru Viru Ground Control 121.9  
Viru Viru Approach Control 119.7  
Santa Cruz TMA 124.9  
Santa Cruz TMA 123.7  
Viru Viru Radio 662.2 Air-Ground  
Viru Viru Radio 1009.6 Air-Ground  
Viru Viru Radio 1002.4 Air-Ground  
Viru Viru Radio 885.5 Air-Ground

Viru Viru Radio 664.9 Air-Ground

Viru Viru Radio 552.6 Air-Ground

Viru Viru Radio 127.1 Air-Ground

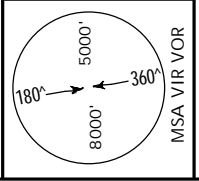
SLVR/VI  
VIRU VIRU INTL

FIR BOLIVIA

SANTA CRUZ  
BOLIVIA  
ARRIVAL

9 DEC 11 20-2 .Eff. 15. Dec.

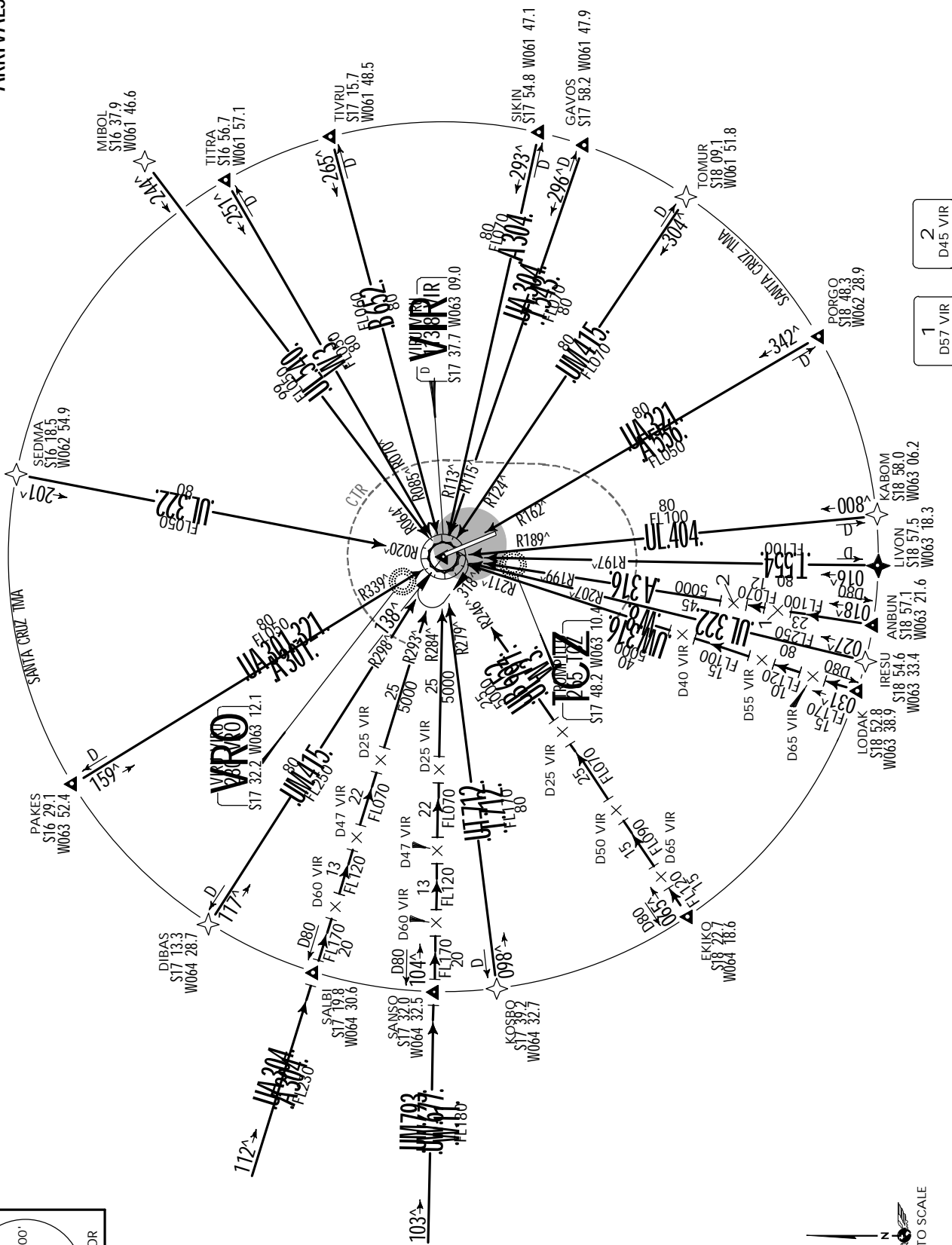
Alt Set: hPa Trans level: By ATC Trans alt: 5000'



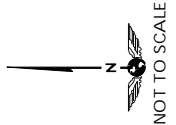
MSA VIR VOR

VALIDO SOLO PARA SU USO EN SIMULADOR

ARRIVALS

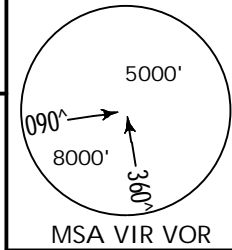


1 D57 VIR  
2 D45 VIR



Apt Elev  
1224'

Trans level: By ATC Trans alt: 5000'



VALIDO SOLO PARA SU USO EN SIMULADOR

ANBUN 1 [ANBUN1],  
IRESU 1 [IRESU1],  
KABOM 1 [KABOM1],  
LIVON 1 [LIVON1],  
LODAK 1 [LODAK1],  
PORGO 1 [PORGO1]  
DEPARTURES

At or above  
1800'

D VIR R-163  
S17 37.6 W063 08.9



Direct distance from Viru Viru Intl to:  
PULKO 33 NM

PULKO  
S18 07.7  
W062 52.0

LODAK  
S18 52.8  
W063 38.9

At or above  
FL170

1  
At or above  
FL250

PORGO  
(VIR R-163/D80)  
S18 48.3  
W062 28.9

At or above  
FL050

UL-316  
UL-322  
IRESU  
D80 VIR  
S18 54.6  
W063 33.4

ANBUN  
S18 57.1  
W063 21.6

At or above  
FL100

LIVON  
D80 VIR  
S18 57.5  
W063 18.3

At or above  
FL100

KABOM  
S18 58.0  
W063 06.2

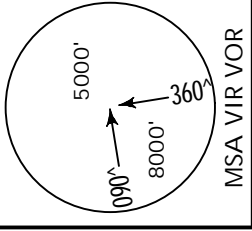
At or above  
FL250

RWY	INITIAL CLIMB
16	After take-off intercept VIR R-163 to PULKO.
34	After take-off climb to 1800', turn RIGHT to intercept VIR R-163 to PULKO.

SID	ROUTING
ANBUN 1 (A-316)	From PULKO heading 221 <sup>^</sup> to ANBUN.
IRESU 1 (UL-322)	From PULKO heading 231 <sup>^</sup> to IRESU.
KABOM 1 (UL-404)	From PULKO heading 206 <sup>^</sup> to KABOM.
LIVON 1 (T-554)	From PULKO heading 218 <sup>^</sup> to LIVON.
LODAK 1 (W-8, UW-316)	From PULKO heading 236 <sup>^</sup> to LODAK.
PORGO 1 (A-556, UA-321)	From PULKO heading 163 <sup>^</sup> to PORGO.

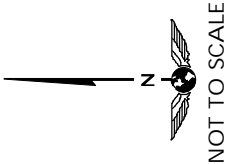
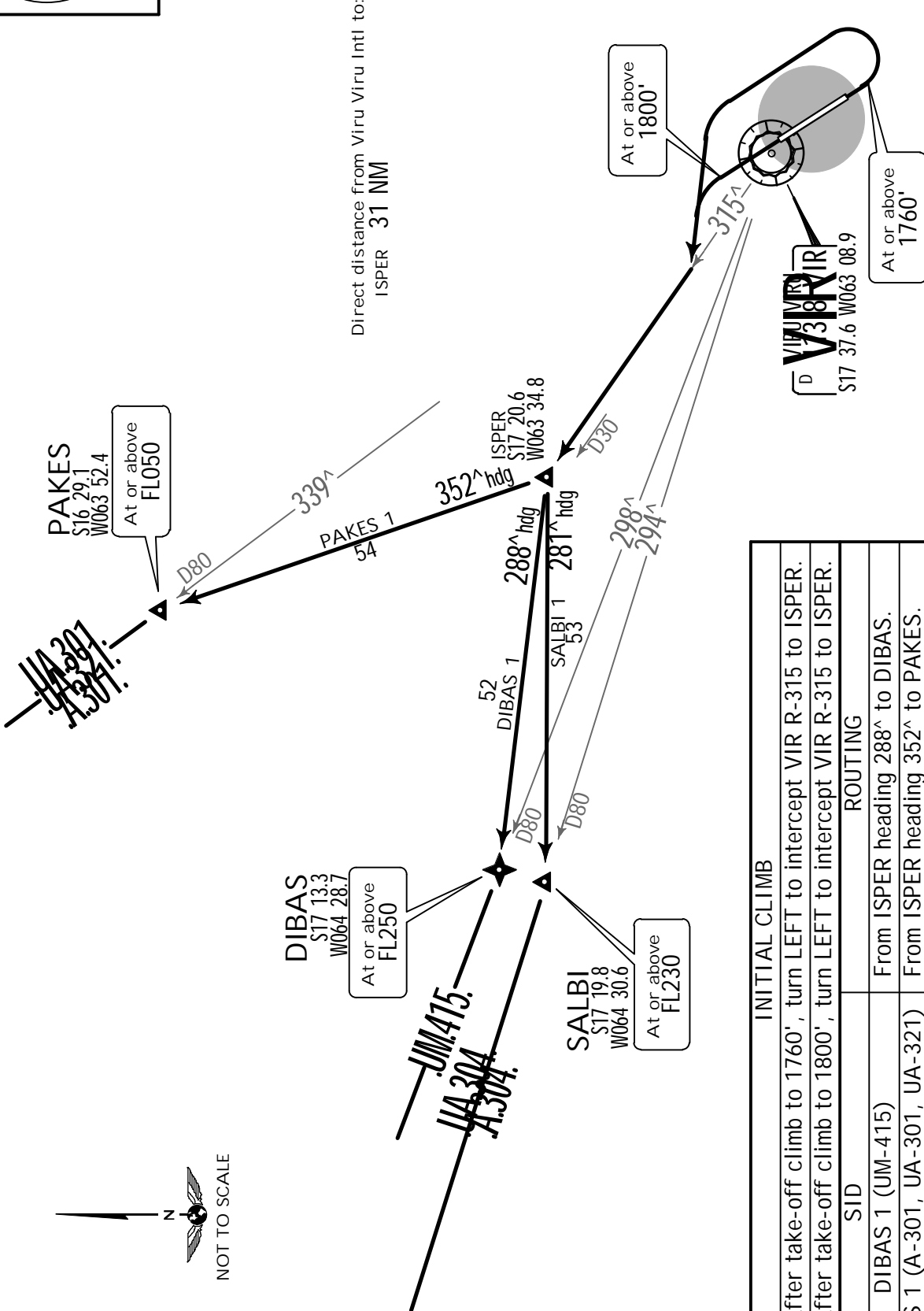
Apt Elev  
1224'

Trans level: By ATC Trans alt: 5000'



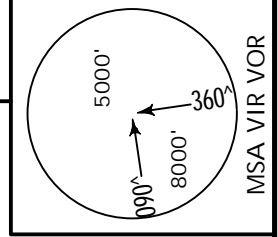
**DIBAS 1 [DIBAS1], PAKES 1 [PAKES1], SALBI 1 [SALBI1] DEPARTURES**

**VALIDO SOLO PARA SU USO EN SIMULADOR**



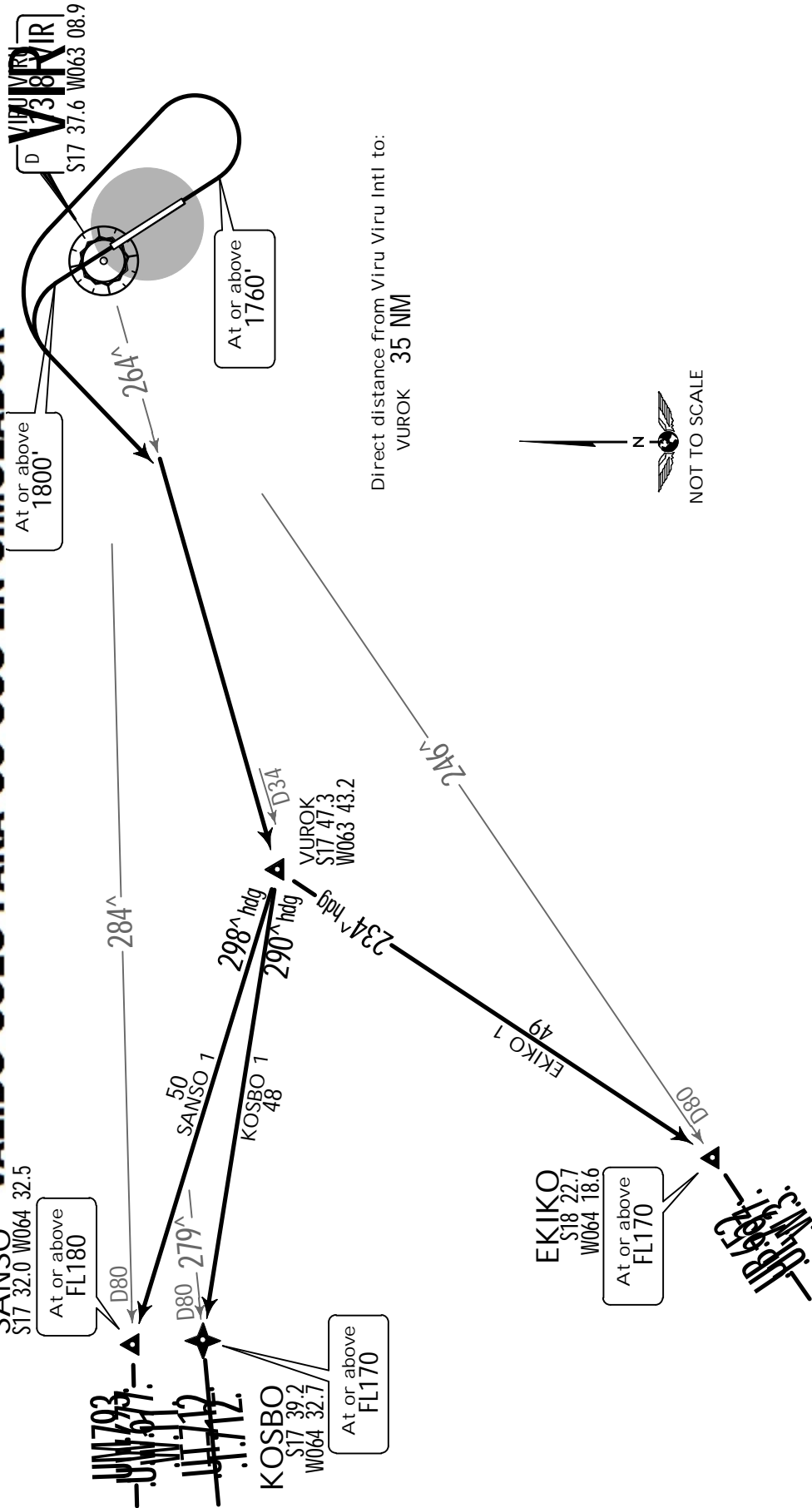
RWY	INITIAL CLIMB	ROUTING
16	After take-off climb to 1760', turn LEFT to intercept VIR R-315 to ISPER.	
34	After take-off climb to 1800', turn LEFT to intercept VIR R-315 to ISPER.	
SID		
	DIBAS 1 (UM-415)	From ISPER heading 288° to DIBAS.
	PAKES 1 (A-301, UA-301, UA-321)	From ISPER heading 352° to PAKES.
	SALBI 1 (A-304, UA-304)	From ISPER heading 281° to SALBI.

Apt Elev 1224' Trans level: By ATC Trans alt: 5000'



EKIKO 1 [EKIKO1], KOSBO 1 [KOSBO1], SANSO 1 [SANSO1] DEPARTURES

VALIDO SOLO PARA SU USO EN SIMULADOR

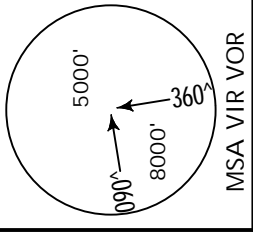


RWY	INITIAL CLIMB	ROUTING
16	After take-off climb to 1760', turn LEFT to intercept VIR R-264 to VUROC.	
34	After take-off climb to 1800', turn LEFT to intercept VIR R-264 to VUROC.	
	SID	
EKIKO 1 (W-3, UB-652, UL-797)		From VUROC heading 234° to EKIKO.
KOSBO 1 (T-712, UT-712)		From VUROC heading 290° to KOSBO.
SANSO 1 (W-11, UM-793, UW-677)		From VUROC heading 298° to SANSO.

CHANGES: EKIKO SID renumbered, revised, SANSO and KOSBO SIDs added.

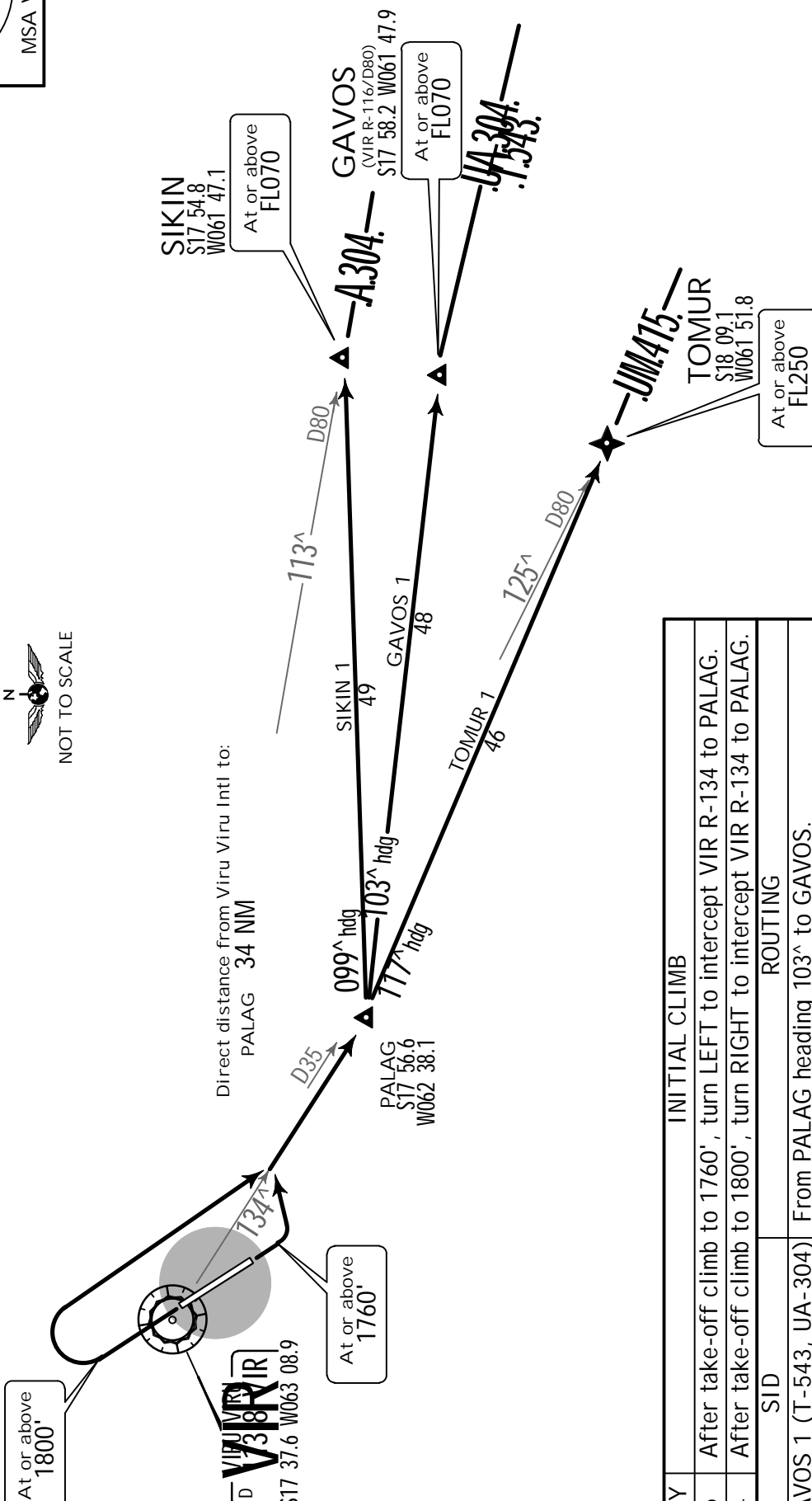
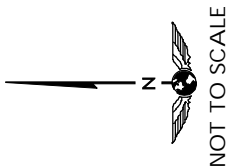
Apt Elev  
1224'

Trans level: By ATC Trans alt: 5000'



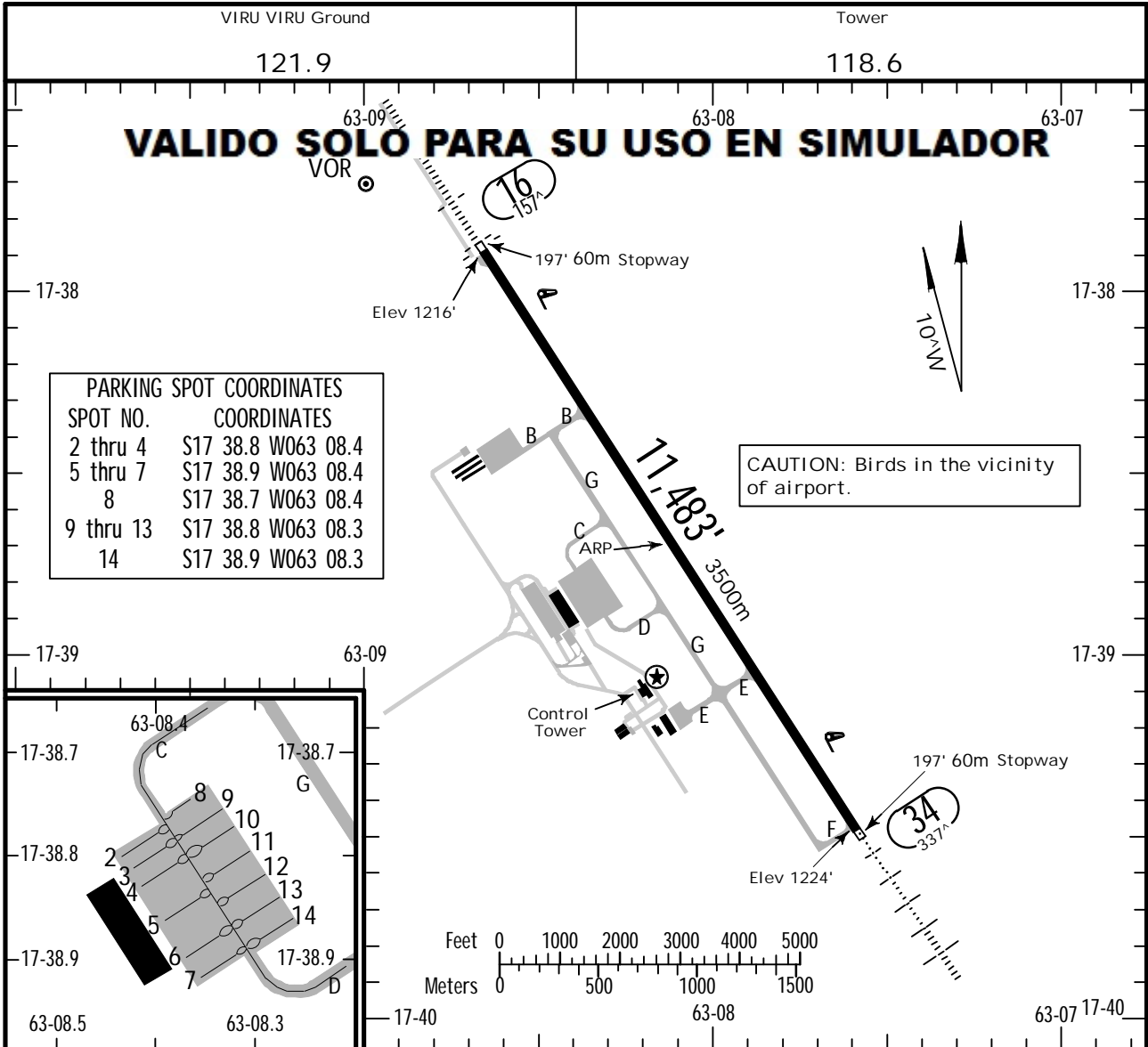
GAVOS 1 [GAVOS1], SIKIN 1 [SIKIN1],  
TOMUR 1 [TOMUR1] DEPARTURES

VALIDO SOLO PARA SU USO EN SIMULADOR



RWY	INITIAL CLIMB
16	After take-off climb to 1760', turn LEFT to intercept VIR R-134 to PALAG.
34	After take-off climb to 1800', turn RIGHT to intercept VIR R-134 to PALAG.
	SID
	ROUTING
GAVOS 1 (T-543, UA-304)	From PALAG heading 103° to GAVOS.
SIKIN 1 (A-304)	From PALAG heading 099° to SIKIN.
TOMUR 1 (UM-415)	From PALAG heading 117° to TOMUR.



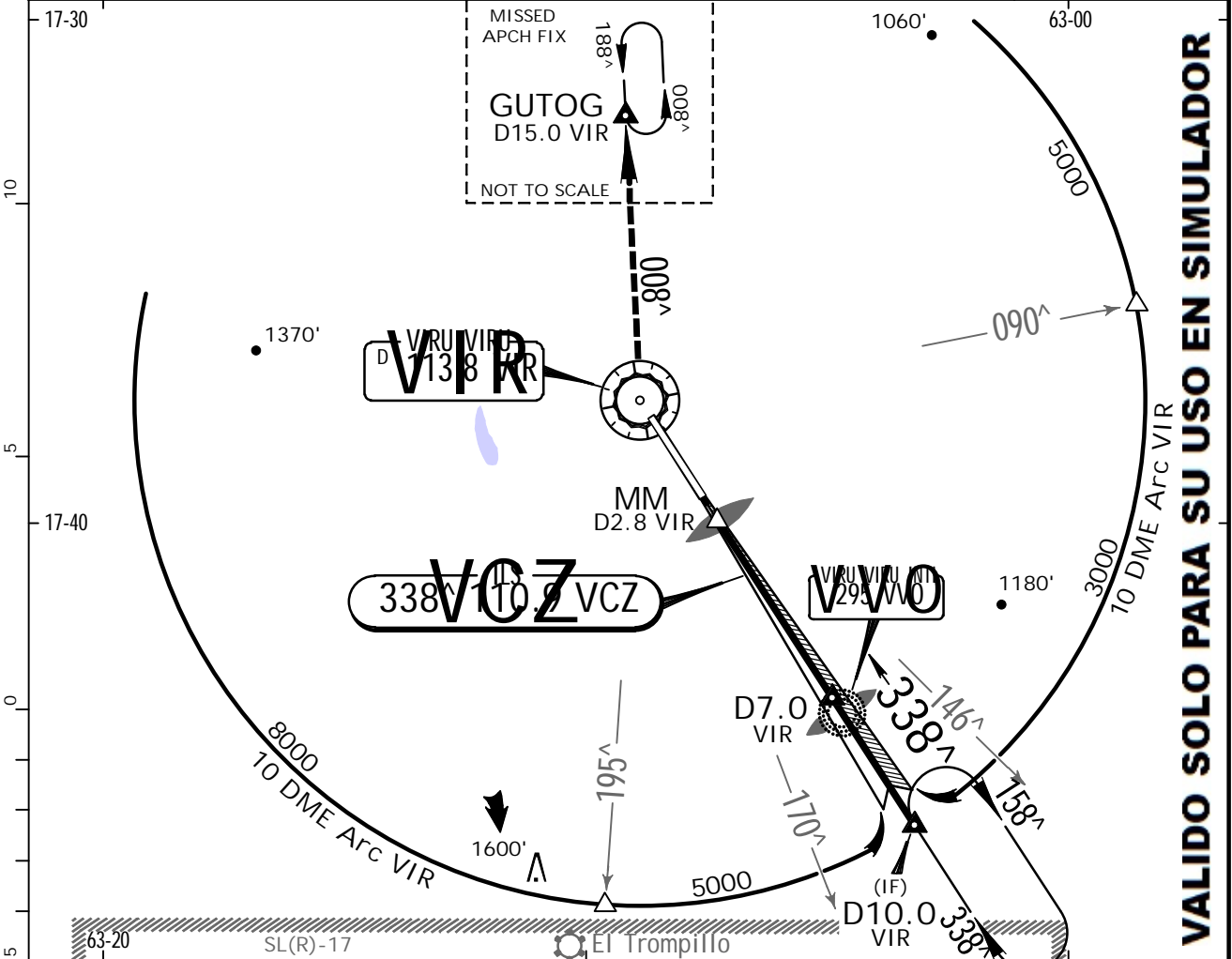


ADDITIONAL RUNWAY INFORMATION

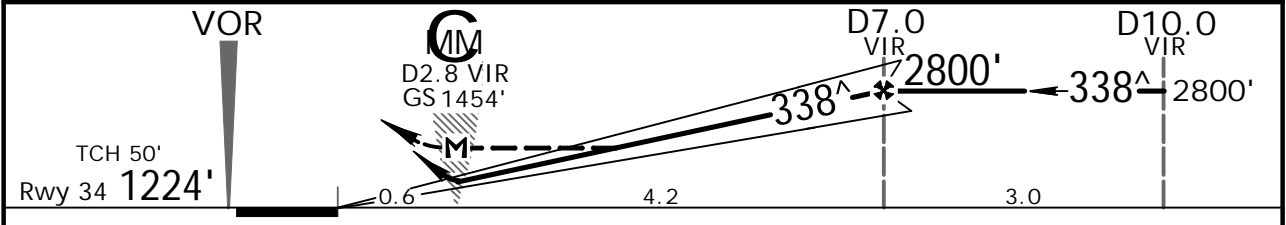
RWY				USABLE LENGTHS			WIDTH
				LANDING BEYOND		TAKE-OFF	
	HIRL	ALSF-I	PAPI-L (angle 3.0°)	RVR	Threshold	Glide Slope	
16							148'
34							45m

	TAKE-OFF		FOR FILING AS ALTERNATE	
	AIR CARRIER All Rwys	GENERAL AVIATION All Rwys	Precision	Non-Precision
2 Eng	500m	150m - 1.6 km	A	900'-4.4 km
3 & 4 Eng	400m		B	
			C	
			D	

VIRU VIRU Approach 119.7		VIRU VIRU Tower 118.6		Ground 121.9	
LOC VCZ 110.9	Final Apch Crs 338 <sup>^</sup>	GS D7.0 (1576')	ILS DA(H) 1454' (230')	Apt Elev 1224' Rwy 34 1224'	
MISSED APCH: Maintain course 338 <sup>^</sup> to VIR VOR and climb to 4000', turn RIGHT to GUTOG/D15.0 VIR via R-008 VIR VOR, enter holding and request instructions from ATC.					
Alt Set: hPa 1. DME required.		Rwy Elev: 44 hPa	Trans level: By ATC	Trans alt: 5000'	



DIST to MAP DME	1.0	2.0	3.0	4.0	4.2
ALTITUDE	1772'	2090'	2409'	2728'	2800'

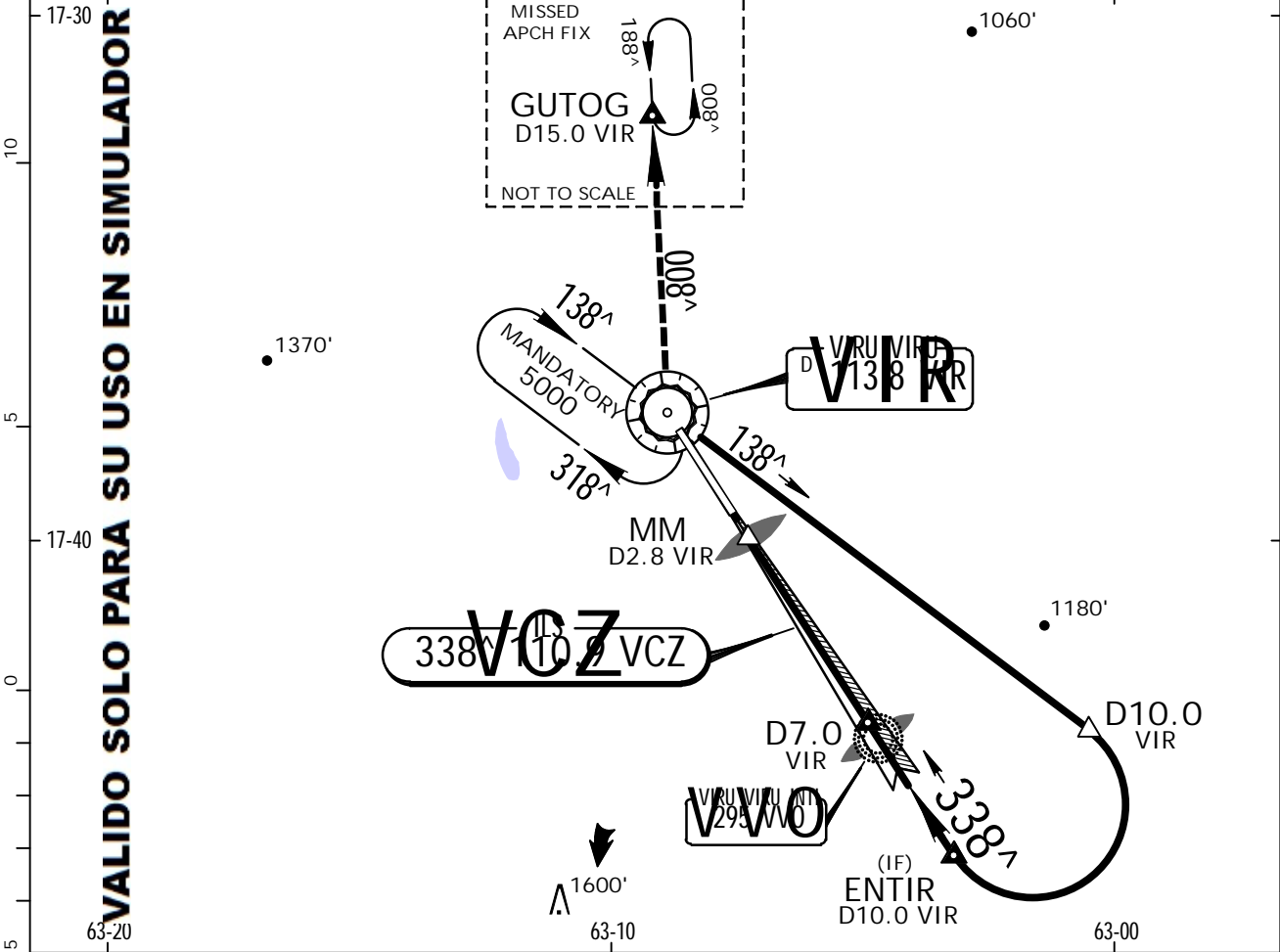


Gnd speed-Kts	70	90	100	120	140	160	HIALS PAPI 4000' on 338 <sup>^</sup> VIR 113.8
GS	3.00 <sup>^</sup>						
MAP at D2.8 VIR or FAF to MAP	5.5	4:43	3:40	3:18	2:45	2:21	

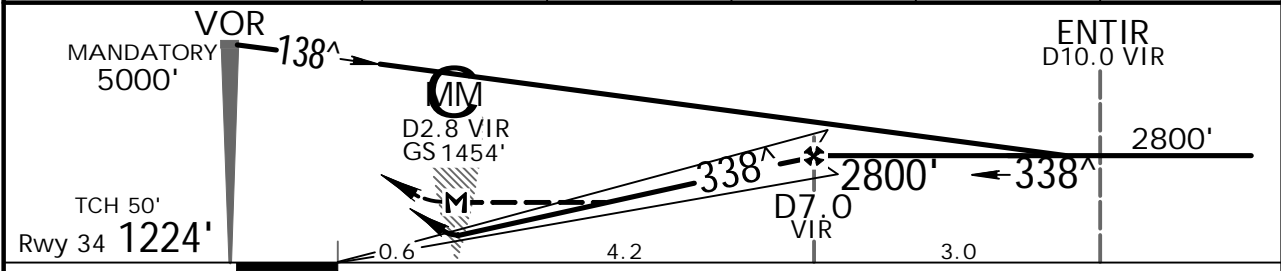
STRAIGHT-IN LANDING RWY34				CIRCLE-TO-LAND			
ILS DA(H) 1454' (230')		LOC (GS out) MDA(H) 1550' (326')		Max Kts		MDA(H)	
FULL		ALS out		ALS out			
A	800m	1600m	1200m	100	1550' (326') -1600m		
B				135	1650' (426') -1600m		
C				180	1750' (526') -2400m		
D				205	1850' (626') -3600m		

PANS OPS 4

VIRU VIRU Approach 119.7		VIRU VIRU Tower 118.6		Ground 121.9	
LOC VCZ 110.9	Final Apch Crs 338 <sup>^</sup>	GS D7.0 2800' (1576')	ILS DA(H) 1454' (230')	Apt Elev 1224' Rwy 34 1224'	
MISSED APCH: Maintain course 338 <sup>^</sup> to VIR VOR and climb to 4000', turn RIGHT to GUTOG/D15.0 VIR via R-008 VIR VOR, enter holding and request instructions from ATC.					
Alt Set: hPa 1. DME required.		Rwy Elev: 44 hPa	Trans level: By ATC		



DIST to MAP	1.0	2.0	3.0	4.0	4.2
ALTITUDE	1772'	2090'	2409'	2728'	2800'

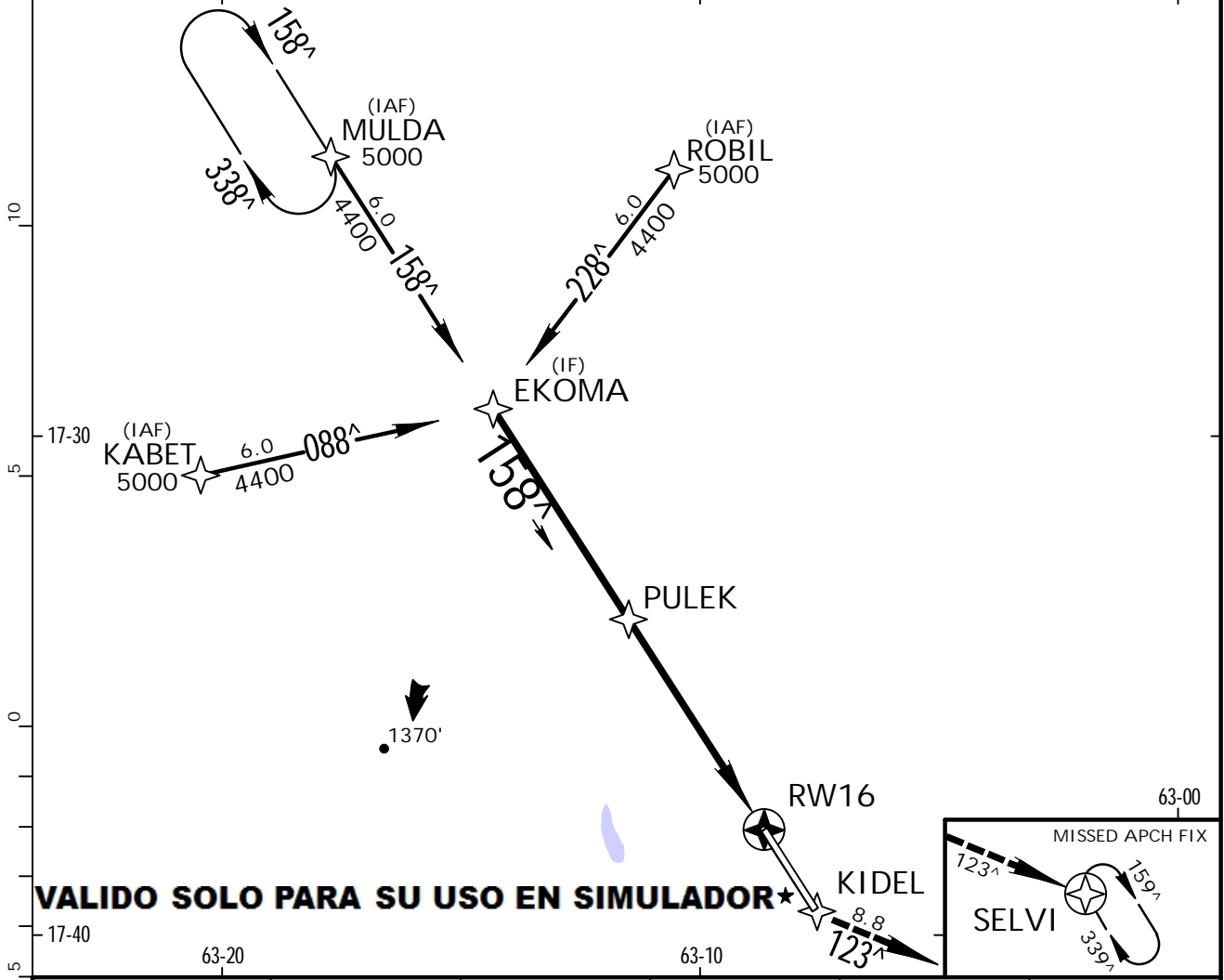
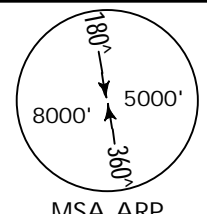


Gnd speed-Kts	70	90	100	120	140	160		4000' ↑ on 338 <sup>^</sup> VIR 113.8	
GS	3.00 <sup>^</sup>	372	478	531	637	743			849
MAP at D2.8 VIR or FAF to MAP	4.2	3:36	2:48	2:31	2:06	1:48			1:35

STRAIGHT-IN LANDING RWY34				CIRCLE-TO-LAND			
ILS DA(H) 1454' (230')		LOC (GS out) MDA(H) 1550' (326')		Max Kts		MDA(H)	
FULL	ALS out	FULL	ALS out	100	1550' (326') -1600m		
A				135	1650' (426') -1600m		
B	800m	1600m		180	1750' (526') -2400m		
C			1200m	205	1850' (626') -3600m		
D			1600m				

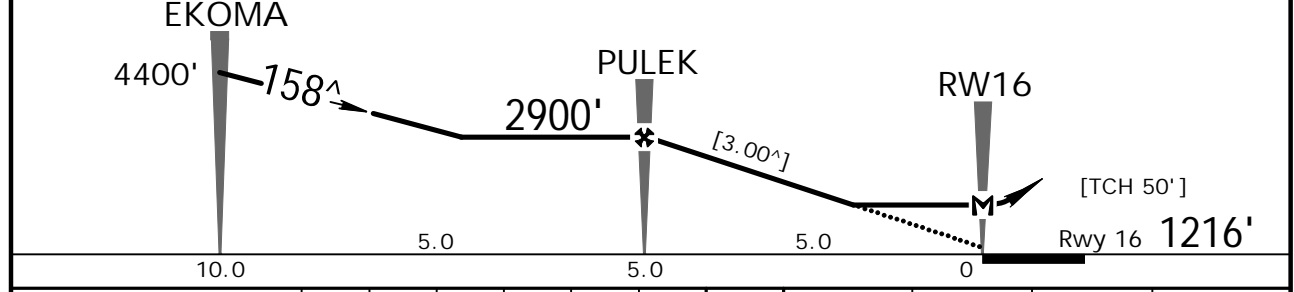
PANS OPS 4

VIRU VIRU Approach 119.7		VIRU VIRU Tower 118.6		Ground 121.9	
RNAV	Final Apch Crs 158 <sup>^</sup>	Minimum Alt PULEK 2900' (1684')	LNAV MDA(H) 1500' (284')	Apt Elev 1224' Rwy 16 1216'	
MISSED APCH: Climb to 4000' direct to KIDEL, turn LEFT direct SELVI to holding 339 <sup>^</sup> and request ATC instructions. No turns at the MAP.					
Alt Set: hPa		Rwy Elev: 44 hPa	Trans level: By ATC		Trans alt: 5000'



**VALIDO SOLO PARA SU USO EN SIMULADOR\***

DIST to THR	5.0	4.0	3.0	2.0	0.7
ALTITUDE	2900'	2540'	2220'	1900'	1500'

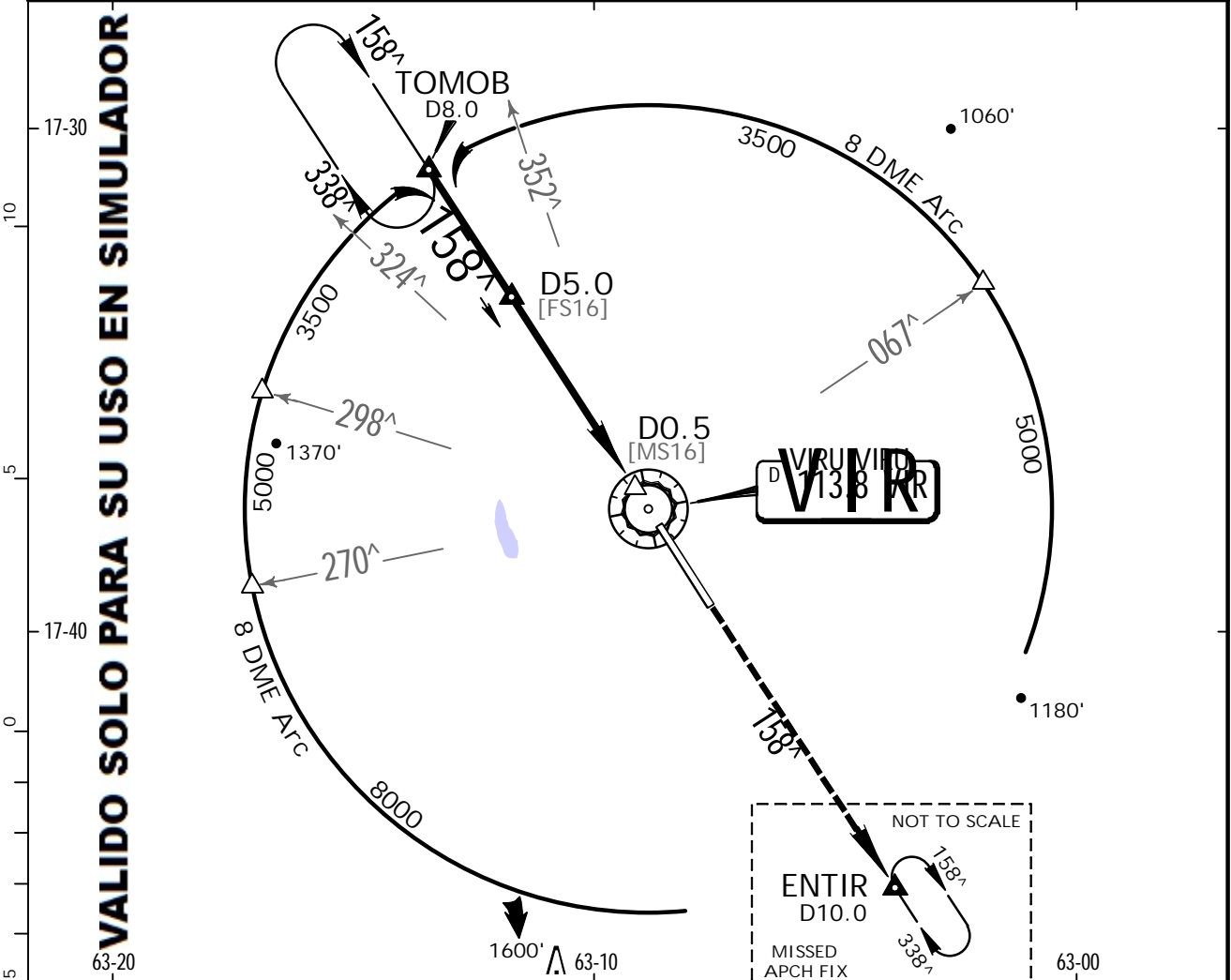


Gnd speed-Kts	70	90	100	120	140	160	ALSF-I PAPI	4000'	D →	KIDEL
Descent Angle [3.00 <sup>^</sup> ]	372	478	531	637	743	849				
MAP at RW16										
PULEK to MAP	5.0	4:17	3:20	3:00	2:30	2:09	1:53			

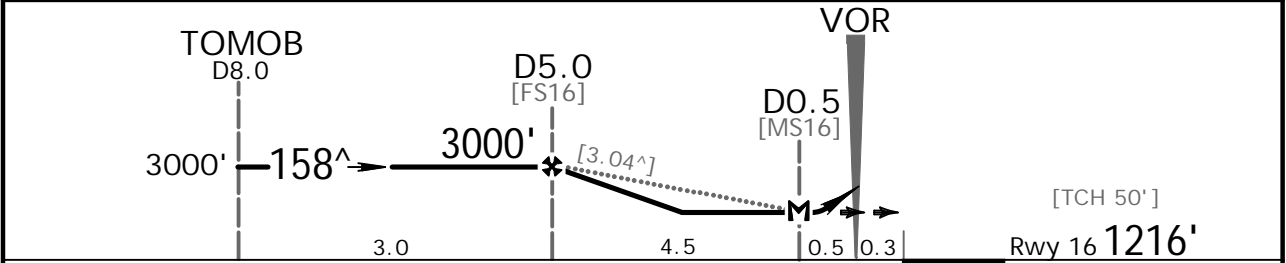
PANS OPS 4	STRAIGHT-IN LANDING RWY16				CIRCLE-TO-LAND	
	LNAV MDA(H) 1500' (284')				Max Kts	MDA(H)
	ALS out		ALS out		100	1600' (376')-1600m
	A	800m	1600m		135	1700' (476')-1600m
	B				180	1800' (576')-2400m
C				205	1900' (676')-3600m	
D	1600m					

CHANGES: Missed approach, minimums, recommended altitude band.

VIRU VIRU Approach 119.7		VIRU VIRU Tower 118.6		Ground 121.9	
VOR VIR 113.8	Final Apch Crs 158 <sup>^</sup>	Minimum Alt D5.0 3000' (1782')	MDA(H) 1540' (324')	Apt Elev 1224' Rwy 16 1216'	
MISSED APCH: Climb to 4000' direct VIR VOR, then via VIR VOR R-158 to ENTIR/D10.0 VIR VOR, enter holding and request instructions from ATC.					
Alt Set: hPa 1. DME required.		Rwy Elev: 44 hPa	Trans level: By ATC	Trans alt: 5000'	



DIST to MAP	4.5	4.0	3.0	2.0	1.0
ALTITUDE	3000'	2804'	2488'	2172'	1856'

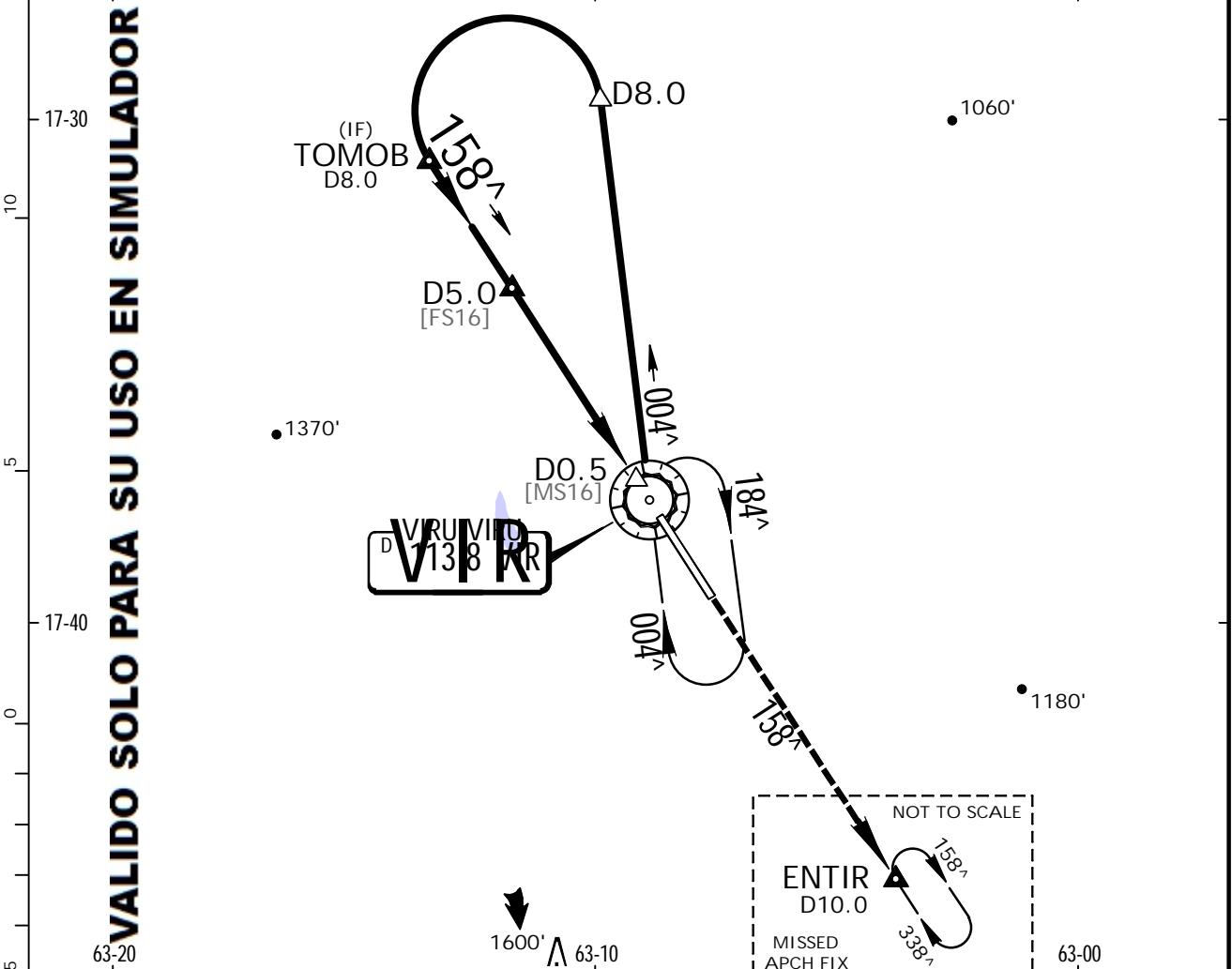


Gnd speed-Kts	70	90	100	120	140	160	ALSF-I 
Descent angle [3.04 <sup>^</sup> ]	376	484	538	645	753	861	
MAP at D0.5 or FAF to MAP	4.5	3:51	3:00	2:42	2:15	1:56	

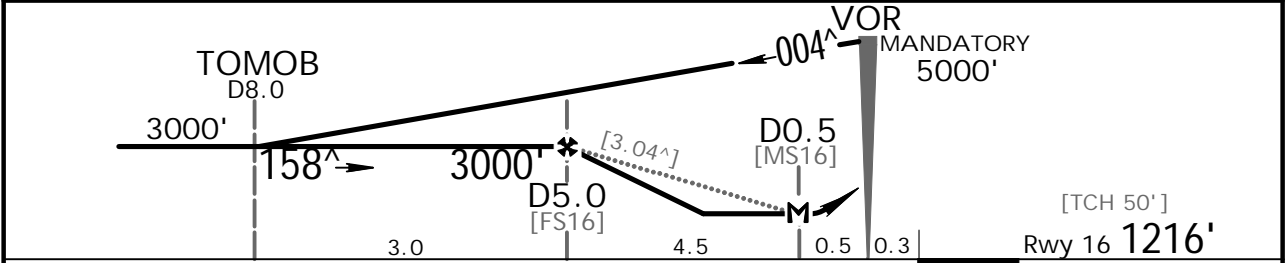
STRAIGHT-IN LANDING RWY16 MDA(H) 1540' (324')			CIRCLE-TO-LAND		
ALS out			Max Kts	MDA(H)	
A			100	1540' (324') -1600m	
B	1200m	1600m	135	1640' (424') -1600m	
C			180	1740' (524') -2400m	
D	1600m		205	1840' (624') -3200m	

PANS OPS 4

VIRU VIRU Approach 119.7		VIRU VIRU Tower 118.6			Ground 121.9
VOR VIR 113.8	Final Apch Crs 158 <sup>^</sup>	Minimum Alt D5.0 3000' (1782')	MDA(H) 1540' (324')	Apt Elev 1224' Rwy 16 1216'	
MISSED APCH: Climb to 4000' direct VIR VOR, then via VIR VOR R-158 to ENTIR/D10.0 VIR VOR, enter holding and request instructions from ATC.					
Alt Set: hPa 1. DME required.		Rwy Elev: 44 hPa	Trans level: By ATC	Trans alt: 5000'	MSA VIR VOR



DIST to MAP	4.5	4.0	3.0	2.0	1.0
ALTITUDE	3000'	2804'	2488'	2172'	1856'

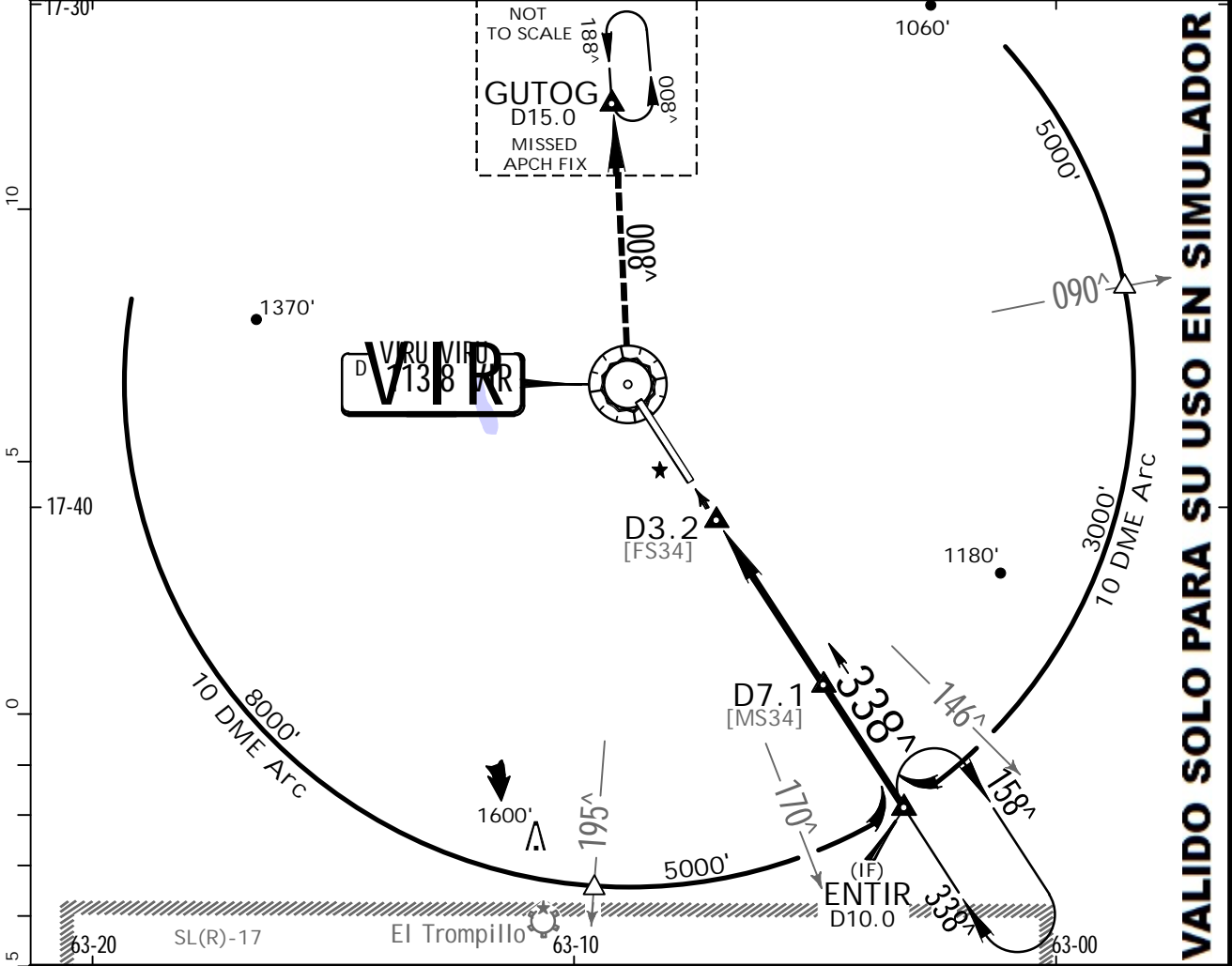


Gnd speed-Kts	70	90	100	120	140	160	ALSF-I PAPI 4000' D → VIR 113.8
Descent angle [3.04°]	376	484	538	645	753	861	
MAP at D0.5 or FAF to MAP	4.5	3:51	3:00	2:42	2:15	1:56	

STRAIGHT-IN LANDING RWY16 MDA(H) 1540' (324')			CIRCLE-TO-LAND		
ALS out			Max Kts	MDA(H)	
A			100	1540' (324') -1600m	
B	1200m	1600m	135	1640' (424') -1600m	
C			180	1740' (524') -2400m	
D	1600m		205	1840' (624') -3200m	

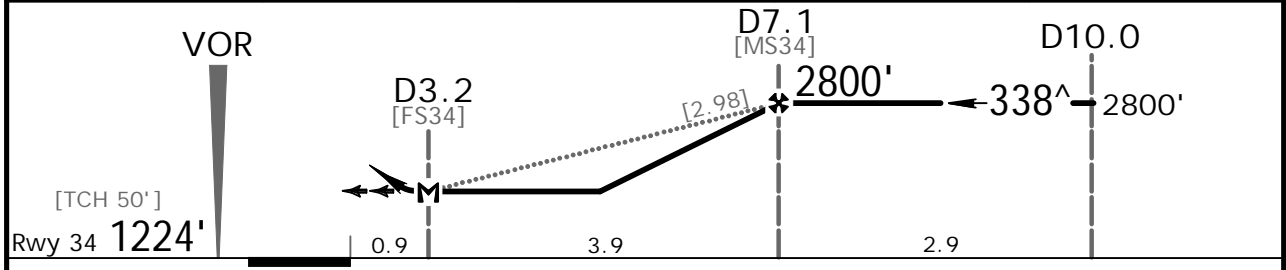
PANS OPS 4

VIRU VIRU Approach 119.7		VIRU VIRU Tower 118.6		Ground 121.9	
VOR VIR 113.8	Final Apch Crs 338 <sup>^</sup>	Minimum Alt D7.1 2800' (1576')	MDA(H) 1550' (326')	Apt Elev 1224' Rwy 34 1224'	
MISSED APCH: Climb to 4000' direct VIR VOR, then turn RIGHT to GUTOG/D10.0 VIR VOR outbound via VIR VOR R-008, enter holding and request instructions from ATC.					
Alt Set: hPa		Rwy Elev: 44 hPa		Trans level: By ATC	
1. DME required.				Trans alt: 5000'	
					MSA VIR VOR



VALIDO SOLO PARA SU USO EN SIMULADOR

DIST to MAP	1.0	2.0	3.0	3.9
ALTITUDE	1866'	2182'	2498'	2800'



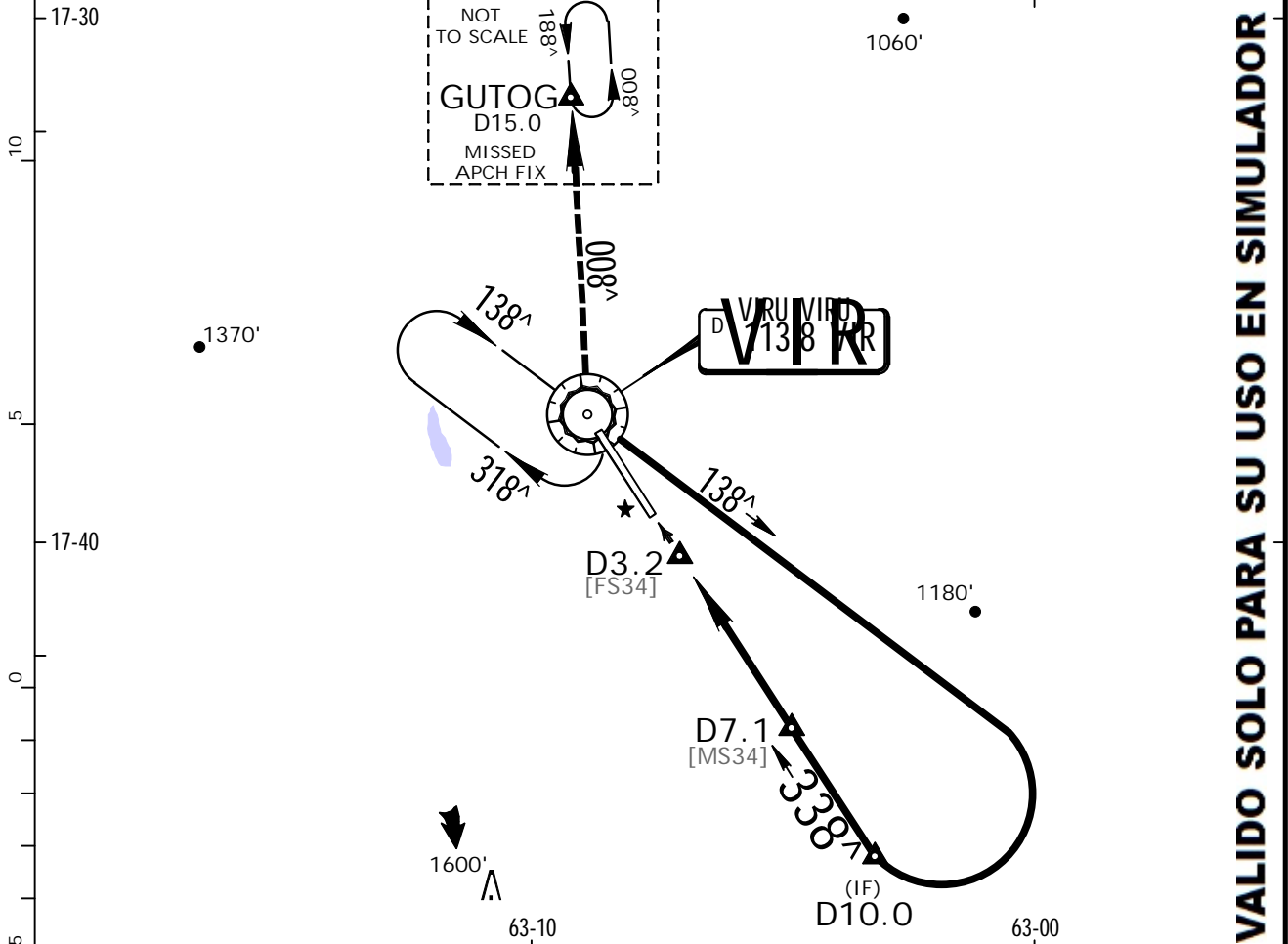
Gnd speed-Kts	70	90	100	120	140	160	HI ALS PAPI 	VIR 113.8
Descent angle [2.98 <sup>^</sup> ]	369	474	527	633	738	843		
MAP at D3.2 or D7.1 to MAP	3.9	3:21	2:36	2:20	1:57	1:40	1:28	

STRAIGHT-IN LANDING RWY34			CIRCLE-TO-LAND		
MDA(H) 1550' (326')					
ALS out			Max Kts	MDA(H)	
A			100	1550' (326') -1600m	
B	1200m	1600m	135	1650' (426') -1600m	
C			180	1750' (526') -2400m	
D	1600m		205	1850' (626') -3600m	

PANS OPS 4

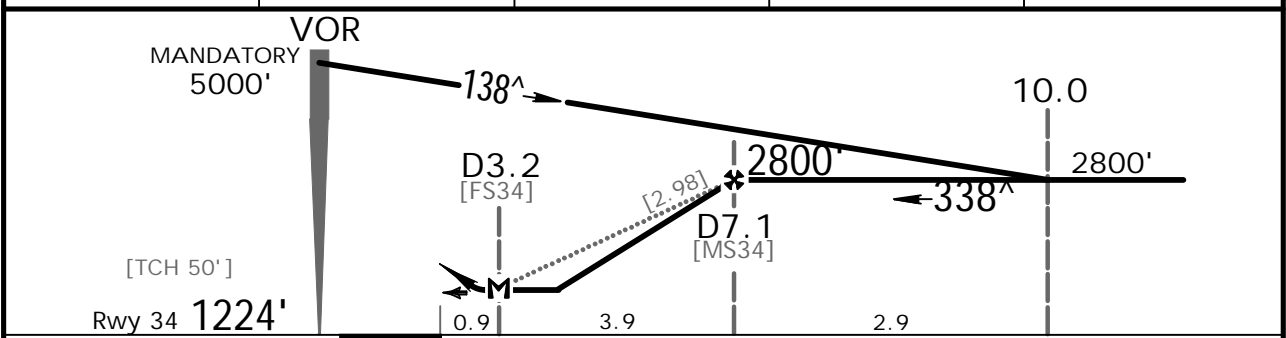


VIRU VIRU Approach 119.7		VIRU VIRU Tower 118.6		Ground 121.9	
VOR VIR 113.8	Final Apch Crs 338 <sup>^</sup>	Minimum Alt D7.1 2800' (1576')	MDA(H) 1550' (326')	Apt Elev 1224' Rwy 34 1224'	<p>5000' 090° 8000' 360° MSA VIR VOR</p>
<p>MISSED APCH: Climb to 4000' direct VIR VOR, then turn RIGHT to GUTOG/D10.0 VIR VOR outbound via VIR VOR R-008, enter holding and request instructions from ATC.</p>					
Alt Set: hPa		Rwy Elev: 44 hPa		Trans level: By ATC	
1. DME required.				Trans alt: 5000'	



VALIDO SOLO PARA SU USO EN SIMULADOR

DIST to MAP	1.0	2.0	3.0	3.9
ALTITUDE	1866'	2182'	2498'	2800'



Gnd speed-Kts	70	90	100	120	140	160		4000'		VIR 113.8
Descent angle [2.98 <sup>^</sup> ]	369	474	527	633	738	843				
MAP at D3.2 or FAF to MAP	3.9	3:21	2:36	2:20	1:57	1:40	1:28			

STRAIGHT-IN LANDING RWY16				CIRCLE-TO-LAND			
MDA(H) 1550' (326')				MDA(H)			
ALS out				Max Kts			
A					100	1550' (326') -1600m	
B	1200m	1600m		135	1650' (426') -1600m		
C					180	1750' (526') -2400m	
D	1600m				205	1850' (626') -3600m	

PANS OPS 4



**Chart changes since cycle 24-2012**

ADD = added chart, REV = revised chart, DEL = deleted chart.

ACT	PROCEDURE IDENT	INDEX	REV DATE	EFF DATE
<b>SANTA CRUZ, (VIRU VIRU INTL - SLVR)</b>				
REV	ILS Y RWY 34	21-1	07 Dec 2012	
REV	ILS Z RWY 34	21-2	07 Dec 2012	
ADD	VOR Y RWY 16	23-1	07 Dec 2012	
ADD	VOR Z RWY 16	23-2	07 Dec 2012	
REV	VOR W RWY 34	23-3	07 Dec 2012	
REV	VOR X RWY 34	23-4	07 Dec 2012	
DEL	DESCENT CHARLIE VOR DME-1...	23-5	07 Dec 2012	
DEL	VOR DME-3 RWY 34	23-6	07 Dec 2012	
REV	AIRPORT, PARKING, AIRPORT...	APT	07 Dec 2012	

## TERMINAL CHART CHANGE NOTICES

No Chart Change Notices for Airport SLVR