

PARA USO EN AVIACION VIRTUAL UNICAMENTE

SLYA/BYC
Apt Elev **2116'**
S21 57.0 W063 39.3

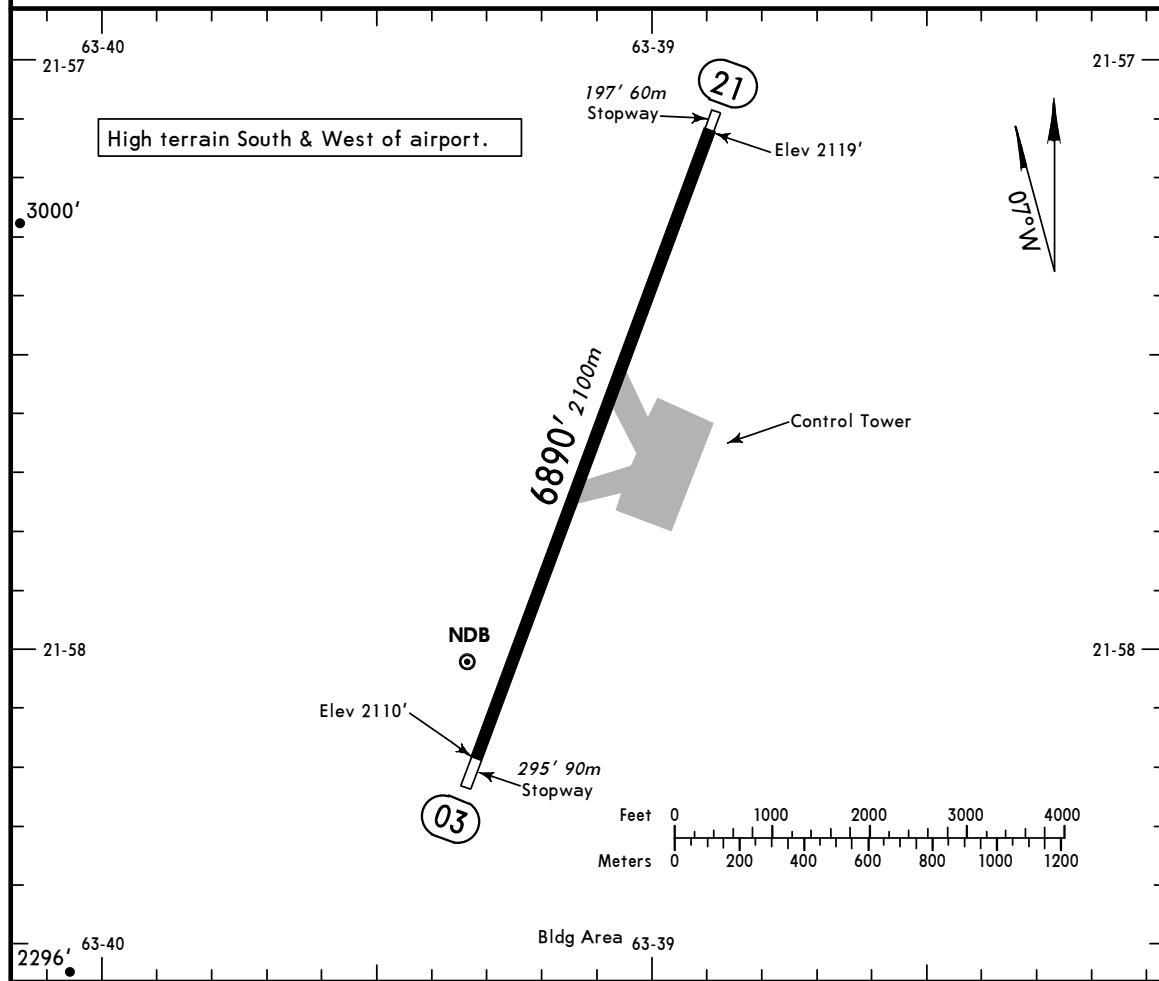
JEPPESEN

2 NOV 07 (16-1)

YACUIBA, BOLIVIA

YACUIBA

*YACUIBA Tower 118.3



ADDITIONAL RUNWAY INFORMATION

RWY	USABLE LENGTHS	LANDING BEYOND		TAKE-OFF	WIDTH
		Threshold	Glide Slope		
03 21					118' 36m

	TAKE-OFF		FOR FILING AS ALTERNATE	
	All Rwys		DAY	NIGHT
	DAY	NIGHT		
1 & 2 Eng	1600m	NA	381m - 4 km	NA
3 & 4 Eng	800m			
		A		
		B		
		C		
		D		

PARA USO EN AVIACION VIRTUAL UNICAMENTE

SLYA/BYC
YACUIBA

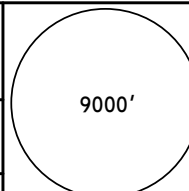
JEPPESEN
2 NOV 07 (16-1)

YACUIBA, BOLIVIA
CAT A, B & C NDB-1 Rwy 21

*YACUIBA Tower 118.3

BRIEFING STRIP™

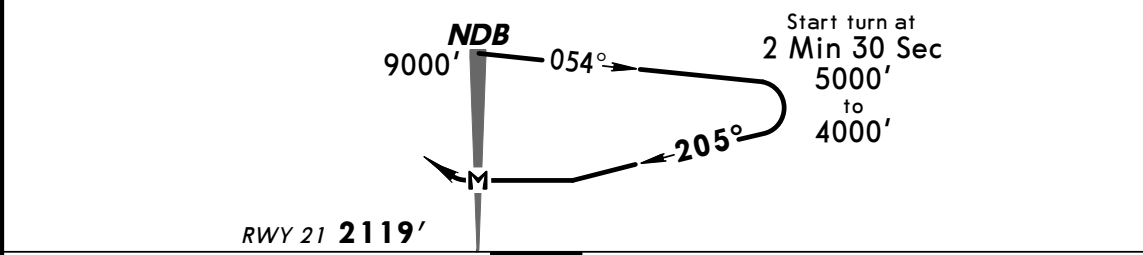
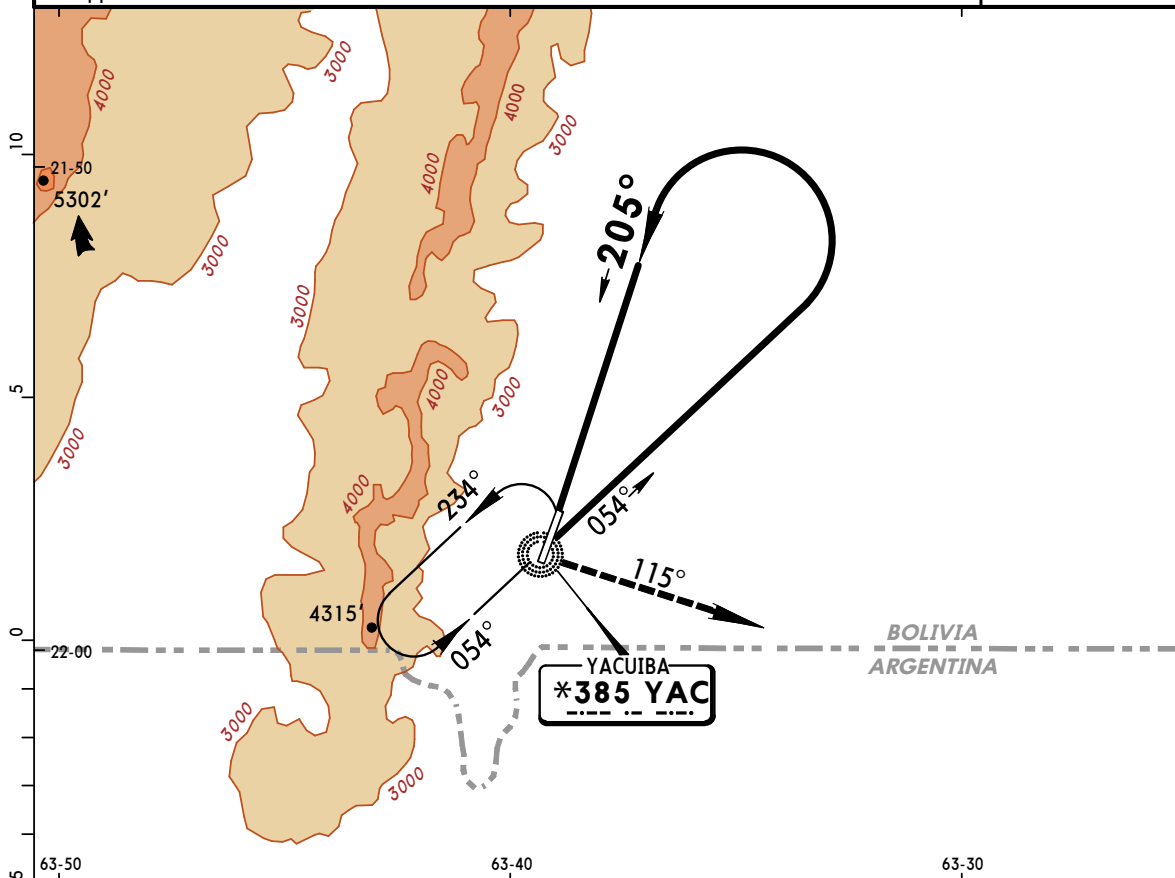
NDB YAC *385	Final Apch Crs 205°	No FAF	MDA(H) (CONDITIONAL) 2500' (381')	Apt Elev 2116' Rwy 21 2119'
---------------------------	----------------------------------	--------	--	---------------------------------------



MISSED APCH: Climbing LEFT turn to 9000' on a 115° bearing from YAC NDB and request instructions from TOWER.

Alt Set: hPa Rwy Elev: 75 hPa Trans level: By ATC Trans alt: 9000'
1. Approach made outside the CTA.

MSA YAC NDB



MAP at NDB				9000'	YAC
				LT	on *385
				115°	

PANS OPS	STRAIGHT-IN LANDING RWY21		CIRCLE-TO-LAND		
	DAY	NIGHT	DAY	NIGHT	
	MDA(H) 2500' (381')		MDA(H)		
A	1.6 km	NA	Max Kts. 100	2550' (434') - 2.4 km	NA
B			135	2650' (534') - 2.4 km	
C			180	2750' (634') - 3.6 km	
D	NA	NA	D	NA	