

PARA USO EN AVIACIÓN VIRTUAL ÚNICAMENTE

JEPPESEN

APR 10-92 (16-1)

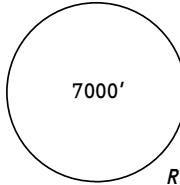
RURRENABAQUE, BOLIVIA

RURRENABAQUE

CAT A,
B & C NDB-1 Rwy 18

NDB *330 RBQ

*RURRENABAQUE Tower 118.1

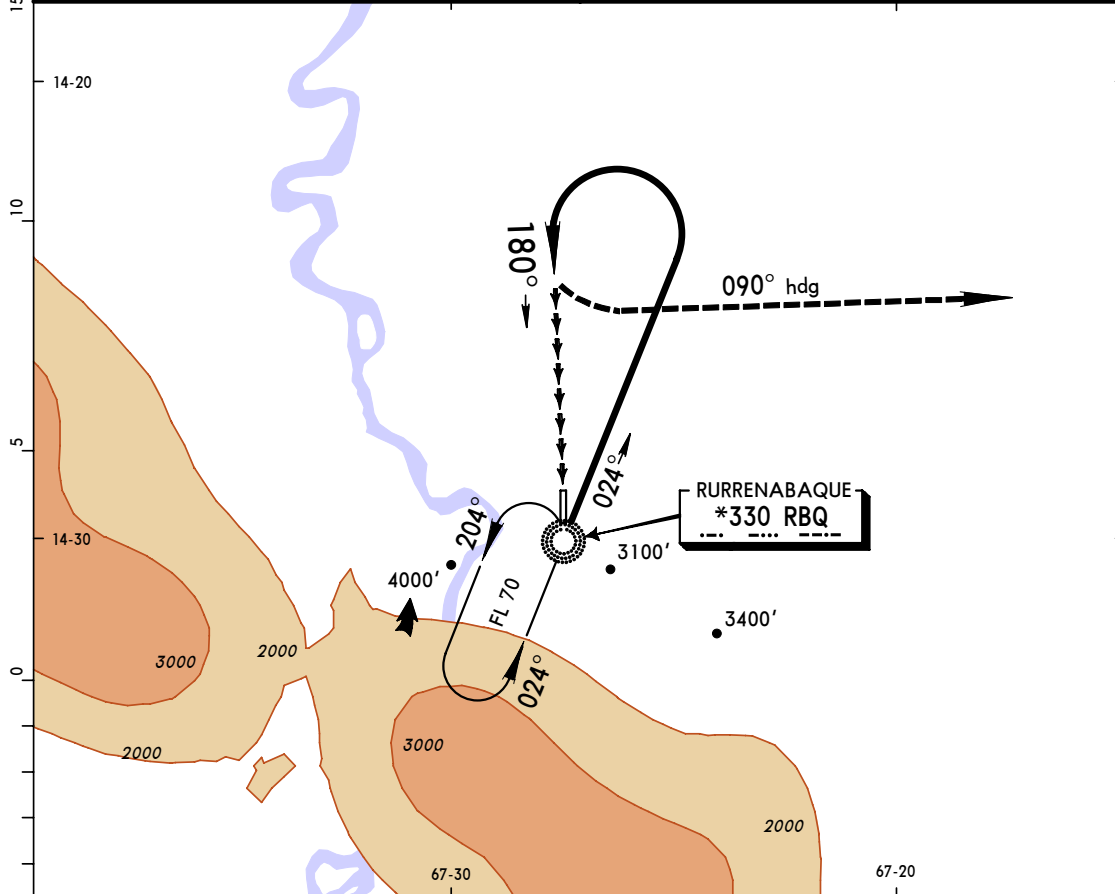


Alt Set: hPa
Apt Elev: 32 hPa

Trans level: By ATC
Trans alt: 5000' (4101')

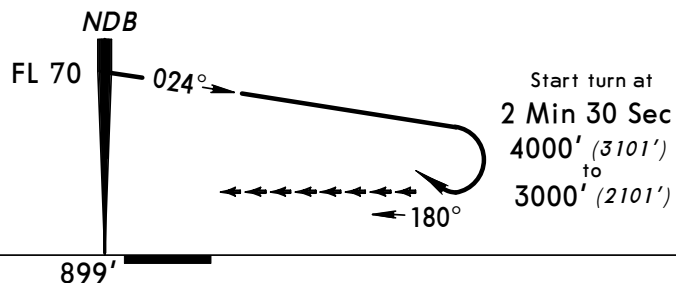
MSA
RBQ NDB

Apt. Elev 899'



Approach made outside the CTA.

OCA(H) 3000' (2101')



MISSED APPROACH: After completion of base turn, turn LEFT climbing to 5000' on a heading of 090° and request instructions from TOWER.

STRAIGHT-IN LANDING RWY18

CIRCLE-TO-LAND

MDA(H) 3000' (2101')
DAY

NIGHT

A	2.0 km
B	2.4 km
C	4.8 km
D	NA

NA	
----	--

A	NA
B	
C	
D	

PANS OPS

CHANGES: Procedure.

© JEPPESEN SANDERSON, INC., 1985, 1992. ALL RIGHTS RESERVED.

PARA USO EN AVIACIÓN VIRTUAL ÚNICAMENTE

RURRENABAQUE, BOLIVIA

SLRQ (16-1) APR 10-92

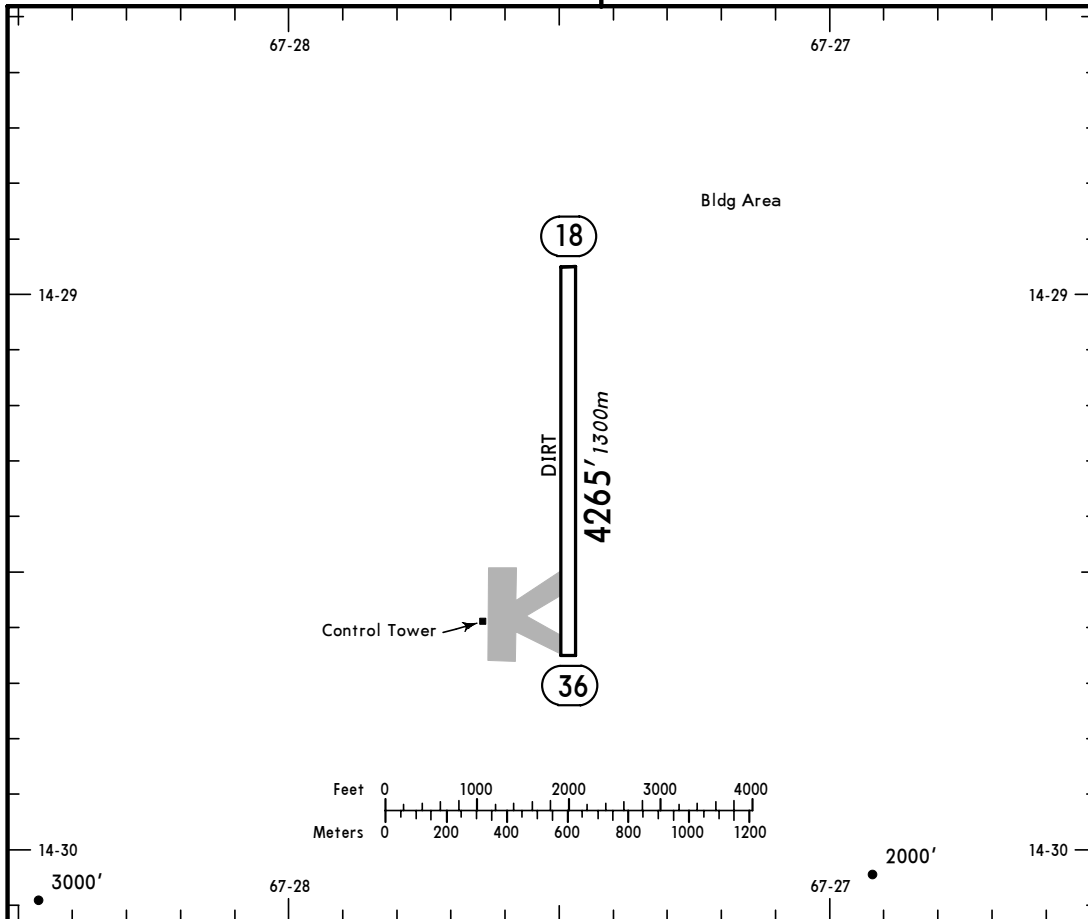


RURRENABAQUE

S14 29.3 W067 27.5

Elev 899' Var 04°W

*RURRENABAQUE Tower 118.1



ADDITIONAL RUNWAY INFORMATION

RWY	USABLE LENGTHS			WIDTH
	Threshold	Landing Beyond Glide Slope	TAKE-OFF	
18 36				164' 50m

	TAKE-OFF		FOR FILING AS ALTERNATE	
	AIR CARRIER Rwy 36	GENERAL AVIATION	DAY	NIGHT
1 & 2 Eng	1.6 km	335m- 2.4 km	A 430m- 4.0 km	NA
3 & 4 Eng	0.8 km	NOT APPLICABLE	B	